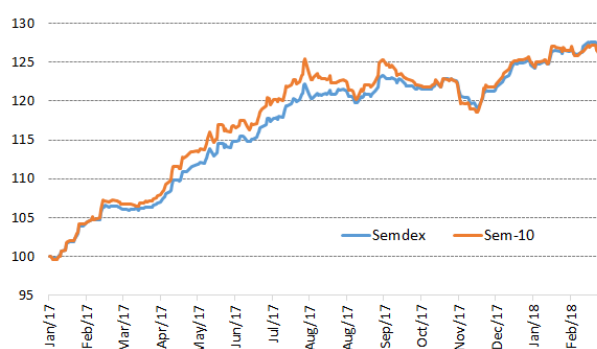


### Market Highlights

INDICES	LATEST	W-O-W % CHANGE	YTD % CHANGE
<b>LOCAL (Friday's closing)</b>			
SEM- ASI	2,122.08	(0.73)	(4.49)
SEMDEX	2,286.72	(0.91)	3.84
SEM-VWAP	2,125.46	(0.61)	(4.24)
SEM-10	435.55	(0.73)	3.25
DEMEX	239.06	+1.18	4.1
<b>REGIONAL (Thursday's closing)</b>			
FTSE/JSE (SOUTH AFRICA)	57,224.60	(1.7)	(2.9)
NGSE (NIGERIA)	41,496.25	(3.1)	9.5
NSEASI (KENYA)	190.45	3.7	12.0
BGSMDC (BOTSWANA)	8,645.36	(0.5)	(2.4)
GGSECI (GHANA)	3,276.55	1.8	27.5
<b>INTERNATIONAL (Thursday's closing)</b>			
DOW JONES	24,682.31	(0.3)	(0.4)
CAC 40	5,239.74	(0.5)	(1.9)
SENSEX	33,006.27	(2.0)	(2.5)
DAX	12,309.15	(0.3)	(5.2)
NIKKEI	21,591.99	(1.0)	(5.2)
FTSE 100	7,038.97	(1.4)	(7.7)

	%
GDP GROWTH at basic prices (2017F) by Statistics Mauritius	3.7
UNEMPLOYMENT RATE (2017 est.)	7.1
CPI HEADLINE INFLATION (Feb 2018)	4.5
BUDGET DEFICIT (% of GDP) – Jul 2016/Jun 2017	3.5
REPO RATE (28 <sup>th</sup> February 2018)	3.5
91 DAY T-BILLS	3.64
182 DAY T-BILLS	3.72
364 DAY T-BILLS	3.82
3-YEAR GOVT. of MTIUS TREASURY NOTES	4.24
5-YEAR GOVT BONDS	4.65
10-YEAR GOVT BONDS	4.47
15-YEAR GOVT BONDS	5.21
20-YEAR GOVT BONDS	5.55

FOREX	LATEST	W-O-W % CHANGE	YTD % CHANGE
MUR/US\$	33.14	-0.1	-1.5
MUR/GBP	46.77	1.3	3.4
MUR/INR	0.51	-1.0	-3.8
MUR/JPY	31.41	0.9	5.4
MUR/ZAR	2.78	0.4	2.4
MUR/EURO	40.86	0.1	1.7



#### Highlights

- ▶ **Banks: MCBG (-0.5%); SBMH (-0.3%)**
- ▶ **Hotels: NMH (-3.1%); LUX Island Resorts (-1.4%); Sun Resorts (-1.4%)**
- ▶ **News: NMH, MCBG, Omnicane, CIM, Altéo**

#### Research Desk

Email: [securities.research@swanforlife.com](mailto:securities.research@swanforlife.com)

Swan Securities Ltd

Swan Centre  
10 Intendance Street  
Port Louis, Mauritius

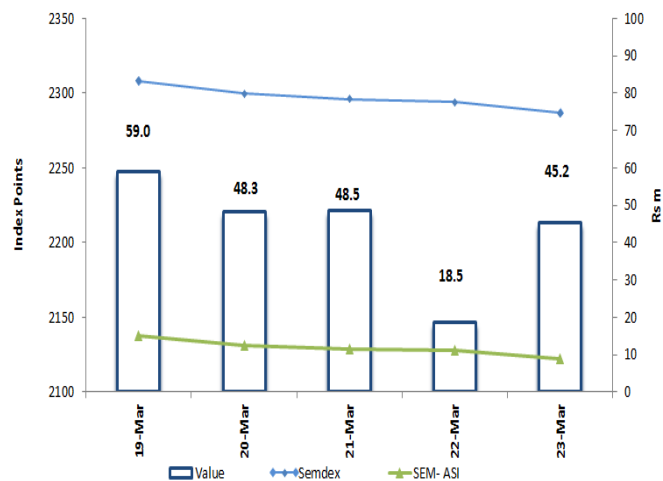
T (230) 208 7010  
F (230) 212 9867  
W swanforlife.com

BRN C06007932

This document may not be reproduced, copied, distributed for any purpose without the prior consent of Swan Securities Ltd. The information and opinions contained in this document have been completed or arrived at by Swan Securities Ltd from sources believed to be reliable and in good faith, but no representation or warranty express or implied is made as to their accuracy completeness or correctness. The information contained in this document is published for the assistance of recipients but is not to be relied upon as being authoritative or taken as substitution for the exercise of judgments by any recipient. Swan Securities Ltd accepts no liability whatsoever for any direct or consequential loss arising from any use of this document and its contents.

	Wk/ending 16.03.2018	Wk/ending 23.03.2018
<b>SECTORAL INDICES</b>		
BANKING INDEX	3,496.41	3,482.35
HOTEL INDEX	364.82	360.45
<b>FOREIGN TRANSACTIONS (Rsm)</b>		
TOTAL FOREIGN PURCHASES	76.73	50.94
TOTAL FOREIGN SALES	85.32	69.84
NET FOREIGN INFLOW/(OUTFLOW)	-8.59	-18.90
<b>MARKET CAPITALISATION (Rsbn)</b>		
OFFICIAL (Semdex) & DEM	340.68	340.21
OFFICIAL (SEM- ASI) & DEM	407.87	407.44
<b>DIVIDEND YIELD (%)</b>		
OFFICIAL MARKET *	3.06	3.08
<b>PER(x)</b>		
OFFICIAL MARKET *	15.25	15.02

(\* ) DY and PER are based on total number of issued shares of SEM- ASI companies.



## News

**NMH** - 123,610,046 Preference Shares of New Mauritius Hotels Limited were converted into 63,399,593 new ordinary shares ranking pari passu with existing ordinary shares. The 63,399,593 new ordinary shares have been issued on 13 March 2018 at a price of MUR 21.45. The Company therefore has 547,670,201 ordinary shares and 37,813,490 Preference Shares in issue

**MCBG** - MCBG wishes to inform its shareholders and the investing public in general that, following the offering of 611,936 options to employees under the Group Employee Share Option Scheme in October 2017, a total of 19,498 options were exercised during the second transfer window of the scheme, for a total consideration of Rs. 5,361,950. The balance of 523,284 options will lapse around the 15th October 2018. As a result of the above, 19,498 new shares have been issued on 19th March 2018 by MCBG for listing on the Stock Exchange of Mauritius. The number of shares in issue now stands at 238,683,096.

**Omicane** - The Board of Directors of Omnicane Limited wishes to announce that Mr Sunil Banymandhub will resign as Chairman of the Company with effect as from 01 July 2018 after eight years of sustained contribution at the helm of the Group.

**CIM** - The Board of CIM Financial Services Ltd wishes to inform its shareholders and the investing public that it has resolved to align the dates of declaration of interim and final dividends with the dates of publication of its interim (half-year) report and abridged audited annual financial statements respectively. As such interim and final dividends will henceforth be declared in May and December respectively.

**Alteo** – Alteo has been suspended close of 21<sup>st</sup> March 2018 to 30<sup>th</sup> March 2018 and will resume trading on the 2<sup>nd</sup> April 2018.

## Official Market

Total market turnover for the week aggregated to the amount of Rs219.6m mainly geared towards **MCBG**, **GRIT (USD)**, and **SBMH** which contributed to 56.79% of TMT. Foreigners were net sellers to the tune of Rs47.5m with banking duo accounting for majority of net sales. The **SEMDEX** and the **SEM-10** dropped to 2,286.72 points (-0.91%) and 435.55 points (-0.73%) respectively.

On the banking counter **MCBG** dropped to Rs276.00 (-0.5%) (VWAP: Rs275.90) on weekly total of 192.6k shares, of which 105.7k were foreign sales and 25.1k were foreign purchases. Banking peer **SBMH** followed a similar trend to close lower at Rs7.64 (-0.3%) (VWAP: Rs7.61). CIM lost previous week gains to end at Rs10.50 (-0.5%) on a total volume of 773.5k shares exchanged. Insurance stock **MUA** ended at Rs60.00 (+0.8%).

Conglomerate **IBL Ltd** on the commercial desk settled lower at Rs51.00 (-1.0%) while **Innodis** inched up to Rs43.55 (+0.1%). After recently hitting all-time highs, **PBL** tumbled to Rs600.00 (-7.7%) making it the worst performer for this week on a total of 5.0k shares driven by local investors. Amongst construction stocks, gainer was **Gamma**, closing at Rs38.00 (+1.9%) while **UBP** plunged by 5.3% to Rs130.25. **PIM** (-3.9%) and **Moroil** (-1.7%) closed the week lower.

The investment desk was driven by **Rogers** (-0.3%), **Alteo Limited** (suspended) and **Ciel** (-0.8%). Investments stocks were mainly on the downside with **PAD** closing at Rs121.50 (-2.6%), **Policy** at Rs6.90 (-1.4%), **United Docks** at Rs102.00 (-1.4%), **ENL Land (O)** (-1.1%) and **Terra** (-1.0%). As for the gainers, they were: **ENL Land (P)** (+1.0%), **Caudan** (+0.9%), **BMH** (+0.8%) and **MDIT** (+0.6%).

All hotel stocks were in the negative territory with **NMH (O)** closing at Rs23.75 (-3.1%), **LUX** and **SUN** both dropped by 1.4% to close at Rs70.00 and Rs51.25 respectively. Other movers were: **Lottotech** (+2.6%), **ASL** (+1.5%), **BlueLife** (-3.5%), **Omicane** (+0.9%) and **Air Mauritius** (+0.3%). **GRIT (USD)** witnessed a significant weekly volume of 1.02m shares exchanged to settle unchanged at USD1.45.

On the debt board, 2.0k of **CBVL class B Bonds**, 605 **MCBG notes** and 300 **NMH floating rate Tranche B Notes** were exchanged. **2**

## DEM

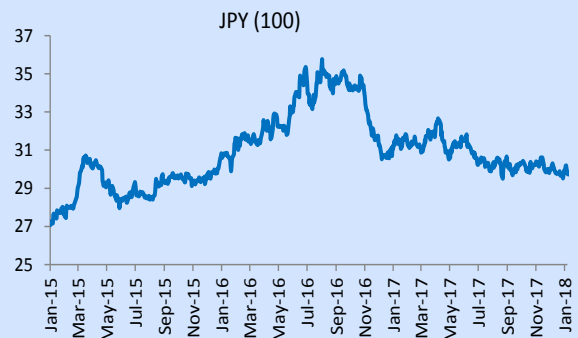
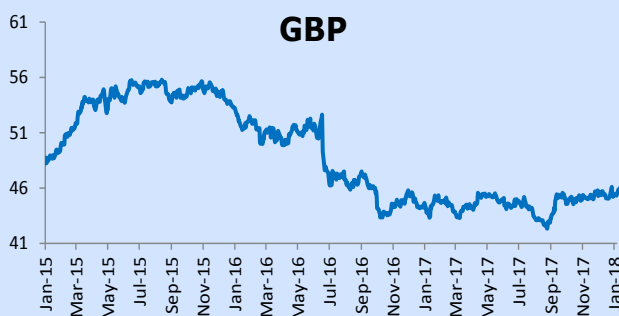
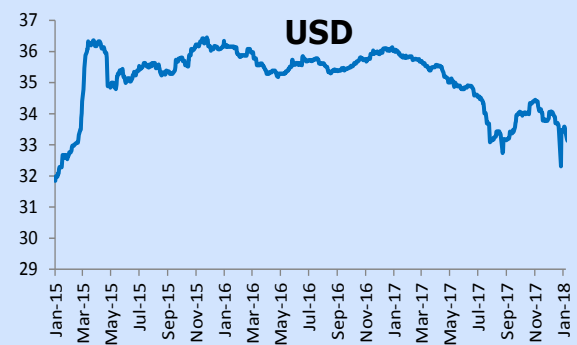
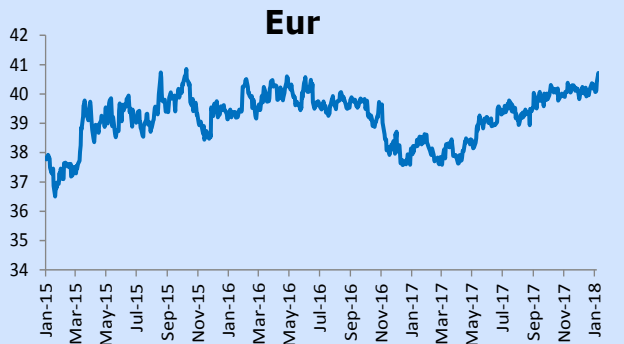
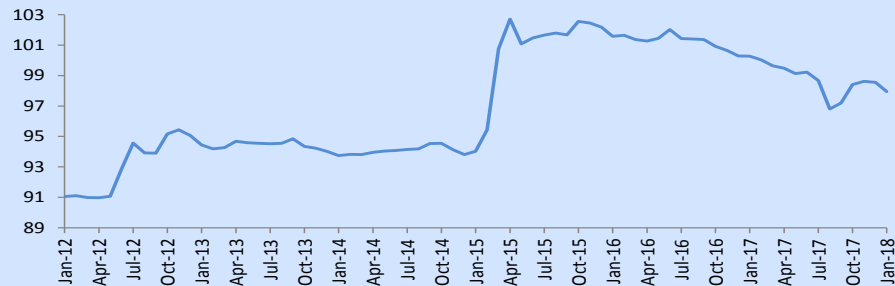
On the **DEM**, turnover of Rs36.03m was geared towards a significant cross of an amount of 1.65m of **Ascencia (Class A)** on the Crossings Board at Rs17.25, all of which being foreign purchases. Total amount exchanged for the week on the stock stood at 1.72m, closing the week at Rs16.75 (-0.3%). Top gainer on the counter was **Swan Life** (+10.6%), followed by **MASC** (+10.4%), **Kolos** (+5.2%), **Medine** (+4.4%), **Bee Equity** (+3.8%), **TPL (P)** (+3.1%), **ACC** (+2.0%), **UBS** (+1.5%) and **Hotelest** (+0.3%). Losers included **Ciel Textile** (-1.7%), **CHSL** (-1.6%), **PHIN** (-1.1%), **UTIN** (-0.6%), and **ENL (P)** (-0.2%). 4.1k of **UTIN Bonds** were also exchanged.

## Dividends Announcements

No dividend announced this week.

## Mauritius Exchange Rate Index

### Forex



Official Market Stocks	Year-end	Last Traded Price		Change for	Change since	Volume	Value	Shares in	Market	Weighted	EPS hist	DPS hist	PER hist	Yield hist	Latest NAV	ROE
		16/03/2018	23/03/2018	the week(%)	31.12.17 (%)	traded	traded	issue (m)	Cap (R\$ m)	Market Cap	(R\$)	(R\$)	(x)	(%)	(R\$)	(%)
<b>Banks, Insurance &amp; Other Finance</b>																
BRAMER BANKING	31-Dec	Suspended	Suspended	0.0	0.0	-	-	901.29	3,875.6	1.1%	-	-	-	-	-	-
CIM FINANCIAL SERVICES	30-Sep	10.55	10.50	(0.5)	4.5	773,538	8,152,515	680.52	7,145.5	2.1%	0.46	0.73	22.8	6.95	5.42	8.49
MCB Group	30-Jun	277.50	276.00	(0.5)	1.1	192,566	53,127,701	238.68	65,876.5	19.1%	28.10	9.25	9.8	3.4	192.66	14.59
MEI	30-Jun	94.00	94.00	0.0	(4.1)	1,000	94,000	8.00	752.0	0.2%	11.43	2.80	8.2	2.98	105.78	10.81
MUA	31-Dec	59.50	60.00	0.8	3.4	19,434	1,165,915	45.09	2,705.4	0.8%	3.52	2.59	17.0	4.3	51.30	6.86
SBM HOLDINGS	31-Dec	7.66	7.64	(0.3)	1.9	3,301,968	25,120,879	3,037.40	23,205.8	6.7%	0.89	0.40	8.5	5.24	9.37	9.54
SWAN GENERAL	31-Dec	365.00	365.00	0.0	7.4	4,840	1,766,600	8.28	3,020.7	0.9%	27.87	12.00	13.1	3.3	295.48	9.43
<b>Commerce</b>																
ENL COMMERCIAL	30-Jun	14.55	14.55	0.0	13.7	100	1,455	29.17	424.5	0.1%	0.13	0.20	111.9	1.37	23.74	-
H MALLAC	31-Dec	82.00	82.00	0.0	(1.2)	-	-	11.26	923.3	0.3%	2.62	1.80	31.3	2.2	149.49	-
INNODIS	30-Jun	43.50	43.55	0.1	2.5	1,800	78,585	36.73	1,599.6	0.5%	0.19	1.85	229.2	4.25	45.48	0.42
IBL Ltd	30-Jun	51.50	51.00	(1.0)	11.8	14,062	720,811	680.22	34,691.4	10.1%	1.64	0.65	31.1	1.27	24.15	-
VIVO ENERGY	31-Dec	145.75	145.75	0.0	3.4	19,801	2,885,996	29.32	4,273.7	1.2%	10.94	5.45	13.3	3.7	29.94	36.54
<b>Industry</b>																
GAMMA CIVIC	31-Dec	37.30	38.00	1.9	18.8	135,800	5,160,380	133.25	5,063.5	1.5%	1.11	0.90	34.2	2.4	19.67	5.64
GO LIFE (USD)	28-Feb	0.02	0.02	0.0	100.0	6,000	3,987	900.00	595.8	0.2%	0.00	-	-	-	0.01	-
PBL	30-Jun	650.00	600.00	(7.7)	9.1	5,033	3,221,712	16.45	9,868.2	2.9%	24.10	10.25	24.9	1.7	219.47	10.98
MCFI	30-Jun	18.80	18.80	0.0	(3.8)	1,200	22,560	22.01	413.7	0.1%	0.54	0.80	34.8	4.26	36.93	1.46
MOROIL	30-Jun	30.00	29.50	(1.7)	2.4	64,059	1,903,420	33.28	981.8	0.3%	1.32	1.30	22.3	4.4	11.68	11.30
PIM	30-Jun	57.25	55.00	(3.9)	(10.6)	2,000	111,400	2.00	110.0	0.0%	1.64	2.75	33.5	5.00	51.88	3.16
UBP	30-Jun	137.50	130.25	(5.3)	9.9	13,870	1,882,465	26.51	3,452.9	1.0%	6.02	3.25	21.6	2.5	118.10	5.10
<b>Investments</b>																
ALANTANTIC LEAF PROPERTIES - (GBP)	28-Feb	1.05	1.05	0.0	0.0	-	-	188.98	9,270.0	2.7%	0.09	0.09	11.7	8.1	-	-
ALTEO LIMITED	30-Jun	28.85	SUSPENDED	N/A	N/A	332,730	9,603,467	318.49	9,236.3	2.7%	1.53	0.82	-	-	53.28	-
BMH	31-Dec	38.20	38.50	0.8	8.1	22,600	862,820	60.45	2,327.2	0.7%	15.54	0.80	2.5	2.1	52.13	29.81
CAUDAN	30-Jun	1.11	1.12	0.9	3.7	1,715,296	1,887,338	2,000.00	2,240.0	0.6%	0.05	0.04	22.4	-	1.97	-
CIEL LIMITED	30-Jun	7.52	7.46	(0.8)	4.5	637,374	4,778,799	1,689.90	12,606.7	3.7%	0.31	0.20	24.1	2.7	9.11	-
FINCORP	30-Jun	27.40	27.40	0.0	0.9	-	-	103.36	2,831.9	0.8%	0.79	0.60	34.7	2.19	52.85	-
MDIT	30-Jun	4.62	4.65	0.6	(0.6)	358,553	1,658,418	423.39	1,968.8	0.6%	0.55	0.24	-	5.2	3.89	-
NIT	30-Jun	24.50	24.50	0.0	0.0	41,281	1,011,420	27.41	671.4	0.2%	1.13	1.00	21.7	4.08	35.28	-
PAD	30-Jun	124.75	121.50	(2.6)	(3.6)	10,800	1,328,975	38.97	4,734.9	1.4%	2.99	3.25	40.6	2.7	280.14	-
POLICY	31-Dec	7.00	6.90	(1.4)	(4.2)	154,129	1,073,477	226.99	1,566.2	0.5%	0.14	0.35	49.3	5.07	5.53	2.53
ROGERS	30-Jun	34.50	34.40	(0.3)	9.9	521,900	17,788,925	252.05	8,670.4	2.5%	1.93	0.92	17.8	2.67	40.83	4.73
ENL LAND (O)	30-Jun	43.50	43.00	(1.1)	3.2	102,596	4,417,386	295.85	12,721.4	3.7%	2.81	1.18	15.3	2.7	90.06	3.12
ENL LAND (P)		50.50	51.00	1.0	3.0	7,024	356,962	-	-	0.0%	-	2.80	-	5.49	-	-
TERRA	31-Dec	29.00	28.70	(1.0)	2.7	9,200	264,040	227.55	6,530.6	1.9%	0.96	0.85	29.9	3.0	58.41	1.84
UNITED DOCKS	30-Jun	103.50	102.00	(1.4)	17.9	7,300	744,600	10.56	1,077.1	0.3%	8.35	-	12.2	-	194.14	-
<b>Leisure &amp; Hotels</b>																
ASL	31-Dec	67.00	68.00	1.5	(5.6)	715	48,620	3.54	240.4	0.1%	5.38	4.00	12.6	5.9	15.73	34.20
LOTTOTECH	31-Dec	7.70	7.90	2.6	8.2	25,600	197,460	340.00	2,686.0	0.8%	0.26	0.26	30.4	3.29	0.36	72.22
NMH	30-Sep	24.50	23.75	(3.1)	(2.3)	330,929	7,921,771	547.67	13,007.2	3.8%	-	-	-	-	25.32	-
NMH (P)		12.35	12.35	0.0	1.2	700	8,645	37.81	-	0.0%	-	0.66	-	5.34	-	-
LUX ISLAND RESORTS	30-Jun	71.00	70.00	(1.4)	1.4	66,608	4,673,545	137.12	9,598.1	2.8%	3.75	1.25	18.7	1.8	42.24	-
SUN RESORTS	31-Dec	52.00	51.25	(1.4)	5.2	36,507	1,869,568	194.55	9,970.4	2.9%	-	-	-	-	53.79	-
<b>Property Development</b>																
BLUELIFE LIMITED	31-Dec	2.30	2.22	(3.5)	(3.5)	15,223	34,064	654.94	1,454.0	0.4%	-	-	-	-	5.31	-
<b>Sugar</b>																
OMNICANE	31-Dec	55.00	55.50	0.9	0.9	16,403	909,916	67.01	3,719.2	1.1%	2.36	2.00	23.5	3.6	130.59	1.81
<b>Transport</b>																
AIR MAURITIUS	31-Mar	14.55	14.60	0.3	0.0	27,280	395,755	102.31	1,493.7	0.4%	10.60	1.00	1.4	-	43.91	-
<b>Foreign</b>																
DALE CAPITAL GROUP LIMITED	28-Feb	2.36	2.36	0.0	0.0	-	-	65.40	154.3	0.0%	-	-	-	-	0.03	-
<b>Funds/GBL Companies</b>																
Airindo Holdings (Mauritius) Limited (USD) - Intro 15.12.17	31-Dec	11.45	11.45	0.0	-	-	-	-	-	-	0.89	-	-	-	-	-
ASTORIA INVESTMENT - (USD)	31-Dec	0.89	0.89	0.0	0.0	-	-	126.81	3,655.7	1.1%	0.03	-	29.7	-	1.06	-
BAYPORT MANAGEMENT - (USD)		4.40	4.40	0.0	0.0	-	-	-	-	-	0.03	-	-	-	6.77	-
Bravura Holdings Ltd - (USD)		0.10	0.10	0.0	0.0	-	-	-	-	-	-	-	-	-	-	-
Dacodro (USD)		1.00	1.00	0.0	-	-	-	-	-	-	-	-	-	-	-	-
GRIT Real Estate Income Group - USD	30-Jun	1.45	1.45	0.0	3.6	1,015,067	46,434,832	208.51	10,008.2	2.9%	0.16	0.12	9.1	8.32	1.38	-
GREENBAY PROPERTIES - (EUR)		0.09	0.09	0.0	(43.8)	400	1,471	9,358.6	34,861.7	10.1%	-	0.00	-	5.2	-	-
MAINLAND REAL ESTATE - (GBP)		2.00	2.00	0.0	0.0	-	-	-	-	-	0.03	-	-	-	-	-
NEW FRONTIER PROPERTIES - (GBP)		1.06	1.06	0.0	(3.6)	-	-	-	-	-	-	0.08	-	7.2	0.78	-
SANLAM AFRICA REAL ESTATE INVESTMENTS (USD)	31-Dec	3.41	3.41	0.0	0.0	-	-	-	-	-	-	0.12	-	3.52	5.72	-
STONEBRIDGE PROPERTIES - (USD)		1.00	1.00	0.0	0.0	-	-	-	-	-	0.37	-	-	-	-	-
TADVEST - (USD)		0.90	0.90	0.0	0.0	-	-	-	-	-	0.25	-	3.6	-	-	-
TREVO CAPITAL PREFERENCE SHARES (ZAR)		13.00	13.00	0.0	0.0	-	-	-	-	-	-	-	-	-	-	-
Trans Swith Africa Holdings Ltd (USD) - Intro -06.02.18		1.28	1.28	0.0	28.0	-	-	-	-	-	0.06	-	-	-	1.00	-
Universal Partners Ltd (GBP)	Jun-17	1.10	1.10	-	-	-	-	-	-	-	-	-	21.3	-	1.06	-
<b>EXCHANGE TRADED FUND/ETF</b>																
CORESHARES S&P GLOBAL PROPERTY ETF - (USD)		2.49	2.44	(2.0)	(5.8)	-	-	-	-	-	-	-	-	-	-	-
CORESHARES S&P 500 ETF - (USD)		2.77	2.70	(2.5)	0.7	-	-	-	-	-	-	-	-	-	-	-
MCB India Sovereign Bond - (USD)		9.85	9.86	0.1	(6.1)	100	32,688	-	-	-	-	-	-	-	-	-
S&P GIVI SOUTH AFRICA TOP 50 INDEX ETF		115.26	115.26	0.0	(4.7)	-	-	-	-	-	-	-	-	-	-	-
NEWGOLD		411.00	411.00	0.0	0.0	-	-	-	-	-	-	-	-	-	-	-
<b>DUAL CURRENCY TRADING</b>																
GRIT Real Estate Income Group - (MUR)		46.60	46.60	-	-	-	-	-	-	-	-	-	-	-	-	-
<b>DEPOSITARY RECEIPTS</b>																
Afrexibank - (USD) - Intro 04.10.17		4.00	4.00	0.0	(7.0)	14,200	1,875,827	38.6	8,840.9	2.6%	0.19	0.04	23.2	0.9	4.30	-
<b>Total (Equities)</b>																
						10,027,586	215,601,169	345,123								
<b>Total (Debentures)</b>																
						2,906	3,951,363									
<b>Total (Equities &amp; Debentures)</b>																
						10,030,492	219,552,532									



DEM Stocks	Year-end	Last Traded Price		Change for the week (%)	Change since 31.12.17 (%)	Volume traded	Value traded	Shares in issue (m)	Market Cap (Rs m)	Weighted Market Cap	EPS hist (Rs)	DPS hist (Rs)	PER hist (x)	Yield hist (%)	Latest NAV (Rs)	ROE (%)
		16/03/2018	23/03/2018													
<b>Banks, Insurance &amp; Other Finance</b>																
ABC BANKING CORPORATION	30-Jun	26.40	26.40	0.0	0.0	10	270	76.27	2,013.6	3.23%	2.73	0.64	9.7	2.4	17.57	15.54
SWAN LIFE	31-Dec	1,130.00	1,250.00	10.6	(3.1)	300	375,000	2.63	3,290.3	5.29%	69.51	46.00	18.0	3.7	-	-
<b>Commerce</b>																
ABC MOTORS	30-Jun	112.00	112.00	0.0	1.8	-	-	6.18	691.7	1.11%	16.60	2.50	6.7	2.2	111.23	14.92
ASSOCIATED COMMERCIAL	30-Jun	150.00	153.00	2.0	2.0	1,278	194,634	1.14	174.9	0.28%	45.66	4.00	3.4	2.6	305.72	14.94
CHEMCO	31-Dec	19.10	19.10	0.0	0.0	2,900	55,390	6.21	118.6	0.19%	2.49	1.00	7.7	5.2	16.83	14.80
CIE IMMOBILIERE	31-Dec	590.00	590.00	0.0	7.5	-	-	0.27	157.2	0.25%	45.00	23.00	13.1	3.9	1,111.78	4.05
<b>Industry</b>																
BYCHEMEX	31-Dec	4.55	4.55	0.0	2.9	2,200	10,010	5.00	22.8	0.04%	0.02	0.16	227.5	3.5	6.27	0.32
FORGES TARDIEU	31-Dec	125.25	125.25	0.0	(5.1)	-	-	1.92	240.5	0.39%	-	7.50	-	-	172.29	-
LES GAZ INDUSTRIELS	30-Jun	54.00	54.00	0.0	(15.3)	-	-	2.61	141.0	0.23%	3.24	2.70	16.7	5.0	92.65	3.50
Kolos Cement Ltd - Intro 19.02.18	Dec-16	91.00	95.75	5.2	-	100	9,575	27.00	2,585.3	4.15%	-	-	-	-	-	-
LIVESTOCK FEED (O)	30-Jun	48.50	48.50	0.0	24.4	16,700	809,950	31.50	1,527.8	2.45%	3.23	1.20	15.0	2.5	46.55	6.94
LIVESTOCK FEED (P)	30-Jun	25.70	25.70	0.0	0.8	-	-	-	-	0.00%	-	1.20	-	4.7	-	-
LES MOULINS DE LA CONCORDE (O)	30-Jun	231.50	231.50	0.0	7.7	-	-	5.40	1,250.1	2.01%	10.97	8.00	21.1	3.5	274.23	4.00
LES MOULINS DE LA CONCORDE (P)	30-Jun	335.00	335.00	0.0	0.0	-	-	-	-	0.00%	-	20.00	-	6.0	-	-
MAURITIUS COSMETICS	31-Dec	38.30	38.30	0.0	9.4	-	-	10.00	383.0	0.62%	10.39	0.50	3.7	1.3	117.58	8.84
MARGARINE INDUSTRIES	31-Dec	923.00	923.00	0.0	0.0	-	-	0.30	277.1	0.45%	30.91	20.00	29.9	2.2	659.25	4.69
MAURITIUS SECONDARY INDUSTRIES	30-Jun	29.75	29.75	0.0	0.2	-	-	0.80	23.8	0.04%	4.47	1.00	6.7	3.4	73.31	6.10
PAPER CONVERTING	31-Dec	28.00	28.00	0.0	3.7	-	-	3.60	100.8	0.16%	2.52	0.50	11.1	1.8	88.20	2.86
QUALITY BEVERAGE	31-Dec	15.40	15.40	0.0	(0.3)	-	-	22.36	344.3	0.55%	1.70	0.70	9.1	4.5	14.32	-
SOAP & ALLIED INDUSTRIES	31-Dec	22.25	22.25	0.0	(2.2)	5,600	124,600	4.50	100.0	0.16%	3.71	0.50	6.0	2.2	52.01	7.13
<b>Investments</b>																
ASCENCIA Ltd (Class A Shares)	30-Sep	16.80	16.75	(0.3)	7.0	1,723,520	29,693,964	478.39	8,013.0	12.87%	2.03	0.50	8.3	3.0	14.11	14.39
Ascencia Ltd (Preference Shares)	30-Jun	19.50	19.55	-	-	1,711	33,450	-	-	-	-	0.79	-	-	-	-
ENL LTD (P)	30-Jun	27.90	27.85	(0.2)	(4.8)	25,800	719,670	-	-	0.00%	2.18	0.69	12.8	2.5	80.38	-
EUDCOS	30-Jun	21.35	21.35	0.0	6.0	27,929	596,280	121.45	2,593.0	4.17%	1.21	0.90	17.6	4.2	15.15	7.99
THE BEE EQUITY PARTNERS	30-Jun	36.60	38.00	3.8	29.9	47,564	1,744,876	8.82	335.2	0.54%	5.04	-	7.5	-	57.71	26.12
PHOENIX INVESTMENT	30-Jun	440.00	435.00	(1.1)	42.6	970	424,260	5.69	2,473.1	3.97%	21.15	8.72	20.6	2.0	191.06	11.07
RHT HOLDING LTD	30-Jun	36.95	36.95	0.0	13.7	-	-	12.16	449.4	0.72%	3.06	1.15	12.1	3.1	59.25	-
UNITED INVESTMENT	30-Jun	9.50	9.44	(0.6)	(5.6)	1,600	15,142	204.09	1,926.6	3.10%	-	-	-	-	11.59	-
<b>Leisure &amp; Hotels</b>																
CONSTANCE HOTELS SERVICES	31-Dec	31.00	30.50	(1.6)	(4.8)	7,414	226,494	109.65	3,344.4	5.37%	-	0.25	-	0.8	41.98	-
MORNING LIGHT	31-Dec	41.20	41.20	0.0	0.0	-	-	45.96	1,893.6	3.04%	-	-	-	-	21.84	-
SOUTHERN CROSS TOURIST HOTEL	31-Dec	4.61	4.61	0.0	0.0	-	-	125.64	579.2	0.93%	0.08	-	57.6	-	3.19	-
TROPICAL PARADISE (O)	30-Jun	6.08	6.08	0.0	(0.3)	2,000	12,160	142.50	866.4	1.39%	0.21	0.07	29.0	1.2	10.80	-
TROPICAL PARADISE (P)	30-Jun	310.00	319.50	3.1	3.4	200	63,900	-	-	0.00%	-	16.00	-	5.0	-	-
<b>Others</b>																
COVIFRA	31-Oct	22.35	22.35	0.0	0.9	-	-	56.61	1,265.2	2.03%	2.13	4.70	10.5	-	18.88	-
CIEL TEXTILE LTD	30-Jun	50.00	49.15	(1.7)	0.3	241	11,845	101.81	5,003.8	8.04%	4.51	3.00	10.9	6.1	43.62	10.34
HOTELEST	31-Dec	30.55	30.65	0.3	(0.3)	200	6,140	55.92	1,714.0	2.75%	-	0.21	-	0.7	41.96	-
MEDICAL & SURGICAL CENTRE	30-Jun	2.70	2.98	10.4	(6.9)	1,000	2,980	569.94	1,698.4	2.73%	-	0.03	-	1.0	1.21	-
MFD Group Ltd	31-Dec	10.80	10.80	0.0	1.9	-	-	150.00	1,620.0	2.60%	0.82	0.20	13.2	1.9	7.91	10.37
SIT LAND HOLDINGS OPT	30-Jun	10,800.00	11,000.00	-	-	2	21,900	-	-	-	-	-	-	-	-	-
<b>Property Development</b>																
ATTITUDE PROPERTY		13.10	13.10	0.0	7.4	3,700	48,470	160.02	2,096.22	3.4%	0.66	0.65	19.8	5.0	10.42	6.33
NOVUS PROPERTIES	31-Mar	9.00	9.00	0.0	5.9	-	-	-	-	-	0.48	0.38	18.8	4.2	9.62	4.99
<b>Sugar</b>																
CONSTANCE LA GAHETE	31-Dec	117.00	117.00	0.0	(3.3)	-	-	4.80	561.6	0.9%	7.98	4.50	14.7	3.8	103.68	-
MEDINE LTD	30-Jun	68.50	71.50	4.4	6.7	5,162	360,987	105.00	7,507.5	12.06%	0.73	2.10	97.9	2.9	150.39	-
UNION SUGAR ESTATE	31-Dec	30.00	30.00	0.0	17.2	-	-	18.90	567.0	0.91%	0.22	-	136.36	-	94.12	-
<b>Transport</b>																
UNITED BUS SERVICE	30-Jun	33.50	34.00	1.5	1.5	1,300	44,200	4.97	169.0	0.27%	10.08	1.00	3.4	2.9	42.25	23.86
<b>Foreign</b>																
Zentosa Capital Limited (USD)	28-Feb	1.00	1.00	0.0	-	-	-	124.71	4,128.1	-	-	-	-	-	-	-
<b>Total (Equities)</b>						<b>1,879,401</b>	<b>35,606,146</b>		<b>62,248</b>							
<b>Total (Debentures)</b>						<b>4,114</b>	<b>424,893.92</b>									
<b>Total (Equities &amp; Debentures)</b>						<b>1,883,515</b>	<b>36,031,039.92</b>									

Debentures	Nominal Value (Rs)	Last Traded Price		Volume Traded	Value Traded (Rs)	YTM on last traded price (%)	Accrued Interest (Rs)	Issue Date	Maturity Date
		16/03/2018	23/03/2018						
<b>OFFICIAL MARKET</b>									
<b>Structured Products</b>									
Absa bank Limited - Structured Note Programme Due 2023 (USD)- 23.01.18	1000.00(USD)	1,000.00	1,000.00	-	-	-	-	12-Jan-18	9-Jan-23
CM Structured Products Ltd - Zenit Cross - Asset MUR40 Notes - 24.01.18	1,000.00	939.51	939.51	-	-	5.25	6.22	21-Dec-16	24-Jan-22
CM Structured Products Ltd - Zenit Cross - Asset MUR180 Notes - 24.01.18	1,000.00	1,200.00	1,200.00	-	-	-	-	21-Dec-16	24-Jan-22
MCB Structured Solutions Ltd - Crescendo Global Security USD70 Notes (USD)	100.00	112.00	112.00	-	-	-	-	6-May-16	6-May-21
MCB Structured Solutions Ltd - Crescendo Global Security MUR170 Notes	1,000.00	1,150.00	1,150.00	-	-	-	-	6-May-16	6-May-21
MCB Structured Solutions Ltd - Crescendo Global Security MUR100 Notes	1,000.00	1,150.00	1,150.00	-	-	-	-	6-May-16	6-May-21
<b>Debentures</b>									
Compagnie de Beau Vallon Limitée - Class A Bonds	1,000.00	977.90	977.90	-	-	5.50	19.16	27-Oct-15	27-Oct-20
Compagnie de Beau Vallon Limitée - Class B Bonds	1,000.00	997.06	997.17	2,000	1,994,340	5.22	21.24	27-Oct-15	27-Oct-20
Commercial Investment Property Fund Ltd - Senior Tranche	100,000.00	97,654.65	97,654.65	-	-	5.84	1,326.03	12-Jan-17	12-Jan-27
Commercial Investment Property Fund Ltd - Junior Tranche	1,000.00	1,000.20	1,000.20	-	-	6.50	15.67	12-Jan-17	12-Jan-27
Evaco Ltd - Floating Rate Notes - INTRO - 01.07.16	1,000.00	1,047.57	1,047.57	-	-	4.94	2.32	17-Jun-16	16-Jun-21
IBL Ltd - Series 2 - Fixed Rate Notes - 5 Years - Intro 05.10.17	1,000,000.00	1,028,295.33	1,028,295.33	-	-	4.34	2,717.39	8-Sep-17	8-Sep-22
IBL Ltd - Series 3 - Floating Rate Notes - 5 Years - Intro 05.10.17	1,000,000.00	1,020,966.91	1,020,966.91	-	-	3.75	2,309.78	8-Sep-17	8-Sep-22
IBL Ltd - Series 4 - Fixed Rate Notes - 7 Years - Intro 05.10.17	1,000,000.00	1,039,384.30	1,037,682.56	1	1,037,683	4.81	2,989.13	8-Sep-17	8-Sep-24
IBL Ltd - Series 5 - Floating Rate Notes - 7 Years - Intro 05.10.17	1,000,000.00	1,025,612.77	1,025,612.77	-	-	4.31	2,581.52	8-Sep-17	8-Sep-24
MCB GROUP - NOTES	1,000.00	1,041.27	1,019.88	605	617,027	4.44	6.38	8-Aug-13	8-Aug-23
MCB Group Limited - Floating Rate Senior Unsecured Notes Due 2023 - 23.01.18	1,000.00	1,004.22	1,004.22	-	-	3.41	6.23	22-Jan-18	22-Jan-23
MAURITIUS UNION ASSURANCE - NOTES	10,000.00	10,143.49	10,143.49	-	-	5.09	271.16	24-Sep-14	24-Sep-24
New Mauritius Hotels Ltd - Notes -Tranche FLRNMUR7Y - Intro 20.11.17	1,000.00	1,065.00	1,065.00	-	-	3.84	17.85	15-Nov-17	15-Nov-22
New Mauritius Hotels Ltd - Notes -Tranche FRNMUR7Y -Intro 20.11.17	1,000.00	1,059.10	1,059.10	-	-	4.41	1.00	15-Nov-17	15-Nov-22
New Mauritius Hotels Ltd - Notes -Tranche FLRNMUR5Y -Intro 20.11.17	1,000.00	1,004.39	1,004.39	-	-	4.25	15.85	15-Nov-17	15-Nov-24
New Mauritius Hotels Ltd - Notes -Tranche FRNMUR5Y - Intro 20.11.17	1,000.00	1,033.43	1,033.43	-	-	4.00	17.31	15-Nov-17	15-Nov-24
New Mauritius Hotels Ltd - Notes -Tranche FRNEUR4Y - Intro 20.11.17	1,000.00	1,063.00	1,063.00	-	-	1.72	12.21	15-Nov-17	15-Nov-21
NMH - FLOATING RATE TRANCHE A NOTES - (MUR)	1,000.00	1,000.00	1,000.00	-	-	5.75	9.57	15-Jul-15	15-Jul-18
NMH - FLOATING RATE TRANCHE B NOTES - (MUR)	1,000.00	1,005.02	1,007.71	300	302,313	4.75	10.55	15-Jul-15	15-Jul-19
Northfields International School Ltd - (secured 7.75% fixed Rate) - 21.06.17	1,000.00	1,000.61	1,000.61	-	-	7.72	5.95	1-Sep-16	31-Aug-21
Omnicane Ltd - Series 1 - Floating Rate Secured Notes	10,000.00	9,996.78	9,996.78	-	-	4.81	147.26	8-Jun-16	8-Jun-19
Omnicane Ltd - Series 2 - Floating Rate Secured Notes	10,000.00	10,043.00	10,043.00	-	-	5.09	160.96	8-Jun-16	8-Jun-21
Omnicane Ltd - Series 3 - Fixed Rate Secured Notes	10,000.00	10,333.41	10,333.41	-	-	5.25	215.75	8-Jun-16	8-Jun-21
Omnicane Ltd - Series 4 - Fixed Rate Secured Notes	10,000.00	10,625.31	10,625.31	-	-	5.66	232.88	8-Jun-16	8-Jun-23
SBM Holdings Ltd - Class A 1 Series Bond	10,000.00	10,051.70	10,051.70	-	-	4.75	24.25	10-Mar-14	10-Mar-24
SBM Holdings Ltd - Class B 1 Series Bond - (USD)	1000.00(USD)	994.53	994.53	-	-	3.22	9.96	30-May-14	30-May-21
Sun Limited - Notes -Tranche FRNMUR5Y	1,000.00	1,045.12	1,045.12	-	-	4.75	23.67	4-Nov-16	4-Nov-21
Sun Limited - Notes -Tranche FLRNMUR5Y	1,000.00	1,025.33	1,025.33	-	-	4.09	18.94	4-Nov-16	4-Nov-21
Sun Limited - Notes -Tranche FRNMUR7Y	1,000.00	1,052.00	1,052.00	-	-	5.47	25.64	4-Nov-16	4-Nov-23
Sun Limited - Notes -Tranche FLRNMUR7Y	1,000.00	1,025.35	1,025.35	-	-	4.69	20.52	4-Nov-16	4-Nov-23
Sun Limited - Notes -Tranche FRNEUR4Y	1,000.00	1,029.19	1,029.19	-	-	3.34	17.90	4-Nov-16	4-Nov-20
Sun Limited - Notes -Tranche FLRNEUR4Y	1,000.00	1,038.13	1,038.13	-	-	2.53	15.91	4-Nov-16	4-Nov-20
UNITED BASALT PRODUCTS - BOND	100.00	100.41	100.41	-	-	4.16	1.12	31-Oct-13	31-Oct-18
<b>DEM</b>									
ABC Motors Company - Notes	25,000.00	25,013.28	25,013.28	-	-	5.91	242.47	28-Jan-16	27-Jan-19
ASCENCIA - BONDS	12.00	12.81	12.81	-	-	4.88	0.54	8-Dec-15	30-Jun-25
United Investments Ltd - Bond	100.00	103.34	103.28	4,114	424,894	4.00	0.90	1-Feb-16	31-Jan-20