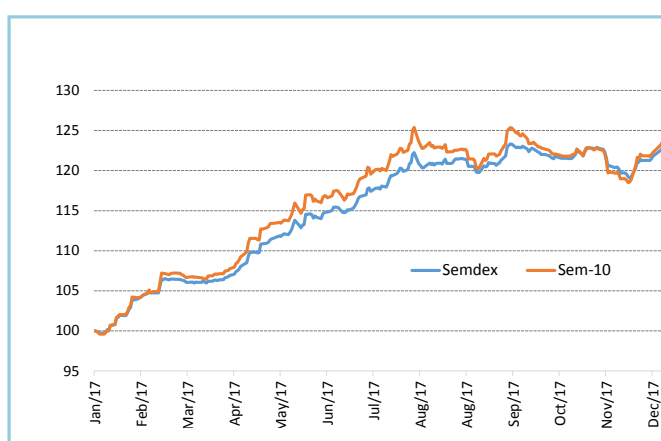


Market Highlights

INDICES	LATEST	W-O-W % CHANGE	YTD % CHANGE
LOCAL (Friday's closing)			
SEM- ASI	2,238.48	+0.74	0.75
SEMDEX	2,223.49	+0.96	0.97
SEM-VWAP	2,238.78	+0.86	0.87
SEM-10	426.76	+1.17	1.17
DEMEX	230.33	+0.27	0.3
REGIONAL (Thursday's closing)			
FTSE/JSE (SOUTH AFRICA)	59,629.64	1.1	1.1
NGSE (NIGERIA)	38,187.28	0.8	0.8
NSEASI (KENYA)	170.98	0.6	0.6
BGSMDC (BOTSWANA)	8,862.22	-	-
GGSECI (GHANA)	2,585.91	0.6	0.6
INTERNATIONAL (Thursday's closing)			
DOW JONES	24,922.68	0.6	0.6
CAC 40	5,331.28	(0.2)	(0.2)
SENSEX	33,969.64	0.4	0.4
DAX	12,978.21	(0.0)	(0.0)
NIKKEI	23,506.33	3.2	3.2
FTSE 100	7,671.11	0.6	0.6

	%
GDP GROWTH at basic prices (2017F) by Statistics Mauritius	3.7
UNEMPLOYMENT RATE (2017 est.)	7.2
CPI HEADLINE INFLATION (end-Nov 2017)	3.5
BUDGET DEFICIT (% of GDP) – Jul 2015/Jun 2016	3.5
REPO RATE (29 th November 2017)	3.5
91 DAY T-BILLS	2.33
182 DAY T-BILLS	2.43
364 DAY T-BILLS	2.53
3-YEAR GOVT. of MTIUS TREASURY NOTES	2.94
5-YEAR GOVT BONDS	3.52
10-YEAR GOVT BONDS	4.47
15-YEAR GOVT BONDS	5.98
20-YEAR GOVT BONDS	5.55

FOREX	LATEST	W-O-W % CHANGE	YTD % CHANGE
MUR/US\$	33.41	-0.7	-0.7
MUR/GBP	45.32	0.2	0.2
MUR/INR	0.53	1.0	1.0
MUR/JPY	29.66	-0.5	-0.5
MUR/ZAR	2.72	0.2	0.2
MUR/EURO	40.33	0.4	0.4



Highlights

- ▶ **Banks: MCBG (+1.3%); SBMH (+1.9%)**
- ▶ **Hotels: NMH (+1.2%); LUX Island Resorts (+0.7%); Sun Resorts (Unch.)**
- ▶ **News: Bayport Management, SBMH**

Research Desk

Email: securities.research@swanforlife.com

Swan Securities Ltd

Swan Centre
10 Intendance Street
Port Louis, Mauritius

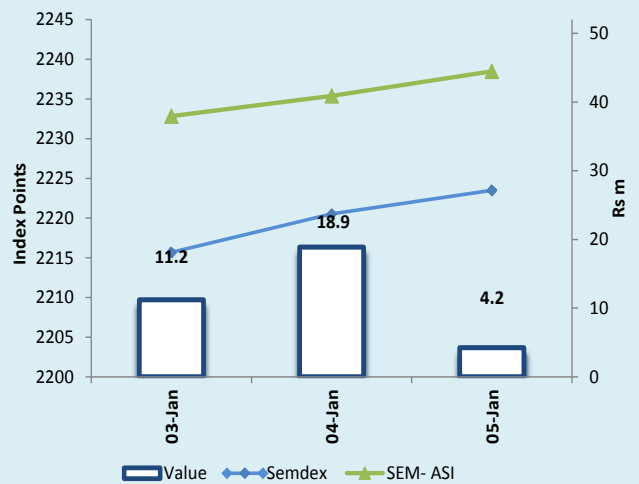
T (230) 208 7010
F (230) 212 9867
W swanforlife.com

BRN C06007932

This document may not be reproduced, copied, distributed for any purpose without the prior consent of Swan Securities Ltd. The information and opinions contained in this document have been completed or arrived at by Swan Securities Ltd from sources believed to be reliable and in good faith, but no representation or warranty express or implied is made as to their accuracy completeness or correctness. The information contained in this document is published for the assistance of recipients but is not to be relied upon as being authoritative or taken as substitution for the exercise of judgments by any recipient. Swan Securities Ltd accepts no liability whatsoever for any direct or consequential loss arising from any use of this document and its contents.

	Wk/ending 29.12.2017	Wk/ending 05.01.2018
SECTORAL INDICES		
BANKING INDEX	3,426.40	3,465.77
HOTEL INDEX	352.88	354.77
FOREIGN TRANSACTIONS (Rsm)		
TOTAL FOREIGN PURCHASES	56.43	18.19
TOTAL FOREIGN SALES	27.03	1.53
NET FOREIGN INFLOW/(OUTFLOW)	29.41	16.67
MARKET CAPITALISATION (Rshn)		
OFFICIAL (Semdex) & DEM	318.49	321.66
OFFICIAL (SEM- ASI) & DEM	408.03	52.79
DIVIDEND YIELD (%)		
OFFICIAL MARKET *	2.96	2.90
PER(x)		
OFFICIAL MARKET *	12.49	12.79

(*) DY and PER are based on total number of issued shares of SEM- ASI companies.



News

Bayport Management Ltd- Further to the communique issued on the 19th of December 2017, the Board wishes to inform its shareholders and the public in general that the Company has bought back 88 684 Ordinary Shares from its shareholders. The Ordinary Shares would be held as treasury shares.

SBMH - Following communiqué of a non-binding agreement of SBMH with the Central Bank of Kenya (CBK) and the Kenya Deposit Insurance Corporation (KDIC) for the carved out assets and liabilities of Chase Bank (Kenya) Ltd, the Board of SBMH today informed that the CBK and KDIC have agreed to the express terms of a bidding offer from SBMH whereby SBMH, through its subsidiary, SBM Bank (Kenya) Ltd, will do the transaction, which is also in line with SBMH's expansion strategy into East Africa.

Official Market

Indices ended the first week of the year higher with the **SEMDEX** settling at 2,223.49 points (+0.96%) and the **SEM-10** at 426.76 points (+1.17%). Turnover for the week amounted to Rs34.3m and was geared mostly towards **MCBG** which contributed to 55.7% of TMT. The stock ended the week higher by 1.3% to Rs276.50 on a weekly exchange of 69.4k shares, of which 64.56k were foreign purchases. On the market, foreigners were net buyers to the tune of Rs16.6m, driven strongly by MCBG which witnessed Rs17.8m purchases.

The other banking stock **SBMH** also followed suit, reaching Rs7.64 (+1.9%) on total of 198.1k shares exchanged throughout this three trading days of the week (VWAP: Rs7.56). **CIM** dropped to Rs9.98 (-0.7%) and insurance stock **MEI** to Rs97.00 (-1.0%). **SWAN General** saw 6.5k shares exchanged flat at Rs340.00.

On the commercial front, gainers were **ENL Comm** (+3.9%), **IBL Ltd** (+2.5%) and **Vivo** (+1.1%) while losers included **H.Mallac** (-3.6%) and **Innodis** (-0.5%). Industrial stock **PBL** reached a new all-time high of Rs553.00 (+0.5%) on total of 2.55k shares, with 2.5k accounting as foreign sales. **PIM** shed off 3.3% to settle at Rs59.50 while **MOROIL** closed at Rs28.85 (+0.2%).

Turnover drivers on the investment counter were **Rogers** Rs31.70 (+1.3%), **MDIT** Rs4.68 (Unch.), **Caudan** Rs1.10 (+1.9%) and **UDL** Rs86.50 (Unch.), amongst others. **BMH** emerged higher at Rs37.00 (+3.9%) on 2.3k shares while **Terra** lost 0.2% to Rs27.90 on 3.4k shares.

Leisure stocks **ASL** and **Lottotech** were both on the downside, with the former closing at Rs68.00 (-5.6%) and the latter at Rs7.24 (-0.8%). Both the ordinary and preference stocks of **NMH** gained 1.2% with **NMH (O)** closing at Rs24.60 and **NMH (P)** at Rs12.35. **LUX** rose to Rs69.50 (+0.7%) while **SUN** closed unaltered at Rs48.70.

Other movers on the counter were **BlueLife** Rs2.36 (+2.6%) and national carrier **Air Mauritius** settled higher at Rs14.80 (+1.4%).

DEM

Turnover for the week amounted to Rs1.27m geared towards **BEE Equity** making up 21.22% of TMT. The latter was the best performer closing at Rs30.95 (+5.8%) on 9.0k shares as weekly traded volume. Gainers were **RHT Holdings** which gained 3.1% to Rs33.50 on 1.1k traded shares, **Medine** to Rs68.00 (+1.5%) and **MASC** to Rs3.22 (+0.6%) on a volume of 34.1k traded shares. Other revenue drivers were **LMLC (O)** to Rs215.00 (UnChng) and **Attitude Property** to Rs12.20 (Unch.). On the downside, **SIT Land Holding Options** lost 9.4% to conclude the week at Rs16,300 on 9 options. As for the indices the **Demex** progressed to 230.33 points (+0.27%).

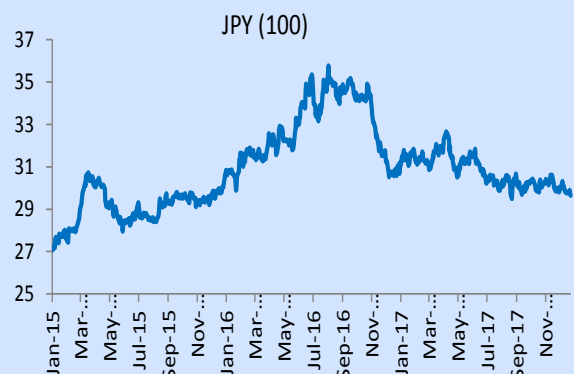
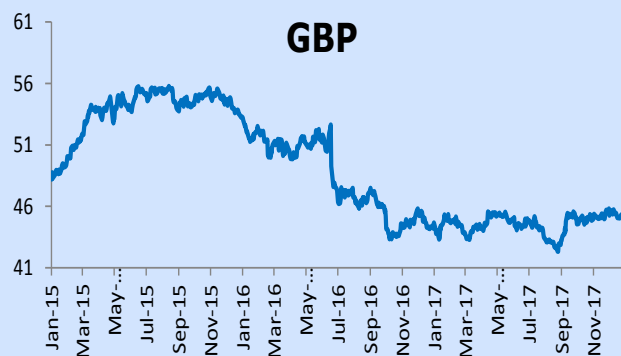
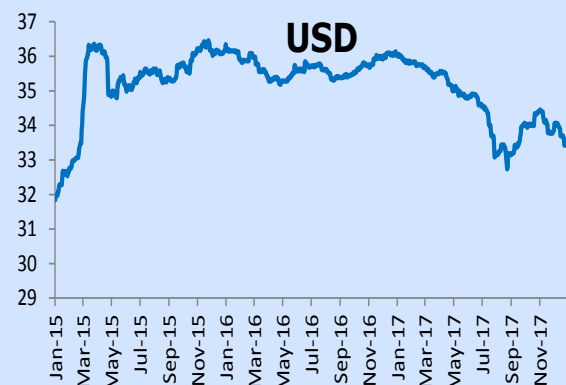
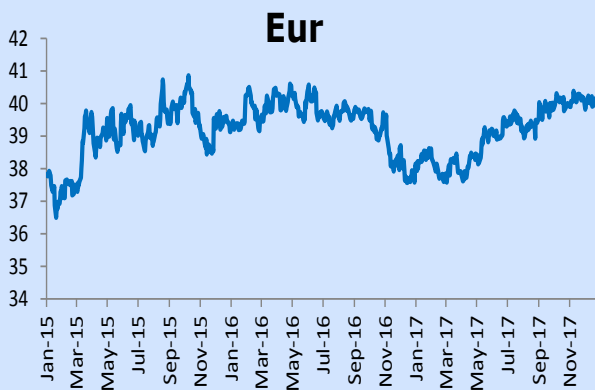
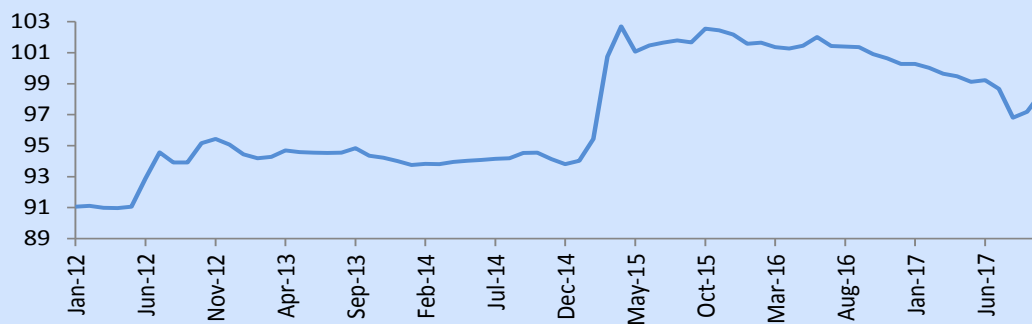
Dividend Announcements

Security	Security Code	Entitlements	Final / Interim	Last	Ex - Date	Registered Date	Date	Financial Year
				Cum -Date			Payable	
Promotion and Development Ltd	PAD.N0000	Re 1.00	Interim	10-Jan-18	11-Jan-18	15-Jan-18	15-Feb-18	30-Jun-18
The Mauritius Development Investment Trust Ltd	MDIT.N0000	Re 0.11	Interim	2-Feb-18	5-Feb-18	7-Feb-18	27-Mar-18	30-Jun-18
Innodis Ltd	HWF.N0000	Re 0.85	Interim	14-Feb-18	15-Feb-18	20-Feb-18	9-Mar-18	30-Jun-18
Omnicanne Ltd	MTMD.N0000	Rs 2.00	Final	6-Mar-18	7-Mar-18	9-Mar-18	27-Mar-18	31-Dec-17

Security	Security Code	Entitlements	Final / Interim	Last	Ex - Date	Registered Date	Date	Financial Year
				Cum -Date			Payable	
Excelsior United Development Companies Ltd	EUDC.I0000	Re 0.40	Interim	5-Jan-18	8-Jan-18	10-Jan-18	15-Feb-18	30-Jun-18
Medine Ltd	MSE.I0000	Rs 1.20	Interim	5-Jan-18	8-Jan-18	10-Jan-18	15-Feb-18	30-Jun-18
Constance Hotels Services Ltd	CHSL.I0000	Re 0.25	Final	9-Jan-18	10-Jan-18	12-Jan-18	6-Feb-18	31-Dec-17
Hotelest Ltd	HTLS.I0000	Re 0.21	Final	9-Jan-18	10-Jan-18	12-Jan-18	8-Feb-18	31-Dec-17
Novus Properties Ltd	NOV.I0000	Re 0.25	Interim	12-Jan-18	15-Jan-18	17-Jan-18	31-Jan-18	30-Jun-18

Mauritius Exchange Rate Index

Forex



Official Market Stocks	Year-end	Last Traded Price		Change for	Change since	Volume	Value	Shares in	Market	Weighted	EPS hist	DPS hist	PER hist	Yield hist	Latest NAV	ROE
		29/12/2017	05/01/2018	the week(%)	31.12.17 (%)	traded	traded	issue (m)	Cap (Rs m)	Market Cap	(Rs)	(Rs)	(x)	(%)	(Rs)	(%)
Banks, Insurance & Other Finance																
BRAMER BANKING	31-Dec	Suspended	Suspended	0.0	0.0	-	-	901.29	3,875.6	1.1%	-	-	-	-	-	-
CIM FINANCIAL SERVICES	30-Sep	10.05	9.98	(0.7)	(0.7)	127,747	1,274,931	680.52	6,791.6	1.9%	0.99	0.73	10.1	7.31	5.42	18.27
MCB Group	30-Jun	273.00	276.50	1.3	1.3	69,390	19,133,440	238.59	65,971.4	18.2%	28.10	9.25	9.8	3.3	192.66	14.59
MEI	30-Jun	98.00	97.00	(1.0)	(1.0)	3,400	329,800	8.00	776.0	0.2%	11.43	2.80	8.5	2.89	105.78	10.81
MUA	31-Dec	58.00	58.00	0.0	0.0	800	46,400	45.09	2,615.2	0.7%	3.52	2.50	16.5	4.3	51.30	6.86
SBM HOLDINGS	31-Dec	7.50	7.64	1.9	1.9	198,050	1,495,137	3,037.40	23,205.8	6.4%	0.89	0.40	8.5	5.24	9.37	9.54
SWAN GENERAL	31-Dec	340.00	340.00	0.0	0.0	6,500	2,210,000	8.28	2,813.8	0.8%	27.87	12.00	12.2	3.5	295.48	9.43
Commerce																
ENL COMMERCIAL	30-Jun	12.80	13.30	3.9	3.9	474	6,304	29.17	388.0	0.1%	0.13	0.20	-	1.50	23.74	-
H MALLAC	31-Dec	83.00	80.00	(3.6)	(3.6)	300	24,000	11.26	900.8	0.2%	2.62	1.80	-	2.3	149.49	-
INNODIS	30-Jun	42.50	42.30	(0.5)	(0.5)	1,025	43,405	36.73	1,553.7	0.4%	0.19	1.85	222.6	4.37	45.48	0.42
IBL Ltd	30-Jun	45.60	46.75	2.5	2.5	8,416	394,473	680.22	31,800.5	8.8%	1.64	0.65	-	-	24.15	-
VIVO ENERGY	31-Dec	141.00	142.50	1.1	1.1	2,600	369,250	29.32	4,178.4	1.2%	10.94	5.45	13.0	3.8	29.94	36.54
Industry																
GAMMA CIVIC	31-Dec	32.00	32.00	0.0	0.0	700	22,400	133.25	4,264.0	1.2%	1.11	0.90	28.8	2.8	19.67	5.64
GO LIFE (USD)	28-Feb	0.01	0.01	0.0	0.0	-	-	900.00	301.3	0.1%	0.00	-	-	-	0.01	-
PBL	30-Jun	550.00	553.00	0.5	0.5	2,552	1,411,100	16.45	9,095.2	2.5%	24.10	10.25	22.9	1.9	219.47	10.98
MCFI	30-Jun	19.55	19.55	0.0	0.0	-	-	22.01	430.2	0.1%	0.54	0.70	36.2	3.58	36.93	1.46
MOROIL	30-Jun	28.80	28.85	0.2	0.2	6,400	184,630	33.28	960.1	0.3%	1.32	1.30	21.9	4.5	11.68	11.30
PIM	30-Jun	61.50	59.50	(3.3)	(3.3)	100	5,950	2.00	119.0	0.0%	1.64	2.75	36.3	4.62	51.88	3.16
UBP	30-Jun	118.50	118.50	0.0	0.0	4,300	509,550	26.51	3,141.4	0.9%	6.02	3.25	19.7	2.7	118.10	5.10
Investments																
ALANTIC LEAF PROPERTIES - (GBP)	28-Feb	1.05	1.05	0.0	0.0	-	-	142.67	9,000.2	2.5%	0.09	0.09	11.7	8.1	-	-
ALTEO LIMITED	30-Jun	29.50	29.50	0.0	0.0	14	413	318.49	9,395.5	2.6%	1.53	0.82	19.3	2.78	53.28	-
BMH	31-Dec	35.60	37.00	3.9	3.9	2,300	82,950	60.45	2,236.5	0.6%	15.54	0.80	2.4	2.2	52.13	29.81
CAUDAN	30-Jun	1.08	1.10	1.9	1.9	427,914	458,636	2,000.00	2,200.0	0.6%	0.05	0.04	22.0	-	1.97	-
CIEL LIMITED	30-Jun	7.14	7.18	0.6	0.6	2,304	16,544	1,689.90	12,133.5	3.4%	0.31	0.20	23.2	2.8	9.11	-
FINCORP	30-Jun	27.15	27.15	0.0	0.0	657	17,838	103.36	2,806.1	0.8%	0.79	0.60	34.4	2.21	52.85	-
MDIT	30-Jun	4.68	4.68	0.0	0.0	102,500	479,700	423.39	1,981.5	0.5%	0.55	0.24	-	5.1	3.89	-
NIT	30-Jun	24.50	24.50	0.0	0.0	2,840	69,580	27.41	671.4	0.2%	1.13	1.00	21.7	4.08	35.28	-
PAD	30-Jun	126.00	126.50	0.4	0.4	300	37,950	38.95	4,927.6	1.4%	2.99	3.25	42.3	2.6	280.14	-
POLICY	31-Dec	7.20	7.20	0.0	0.0	34,653	250,624	226.99	1,634.3	0.5%	0.51	0.35	14.1	4.86	5.53	9.22
ROGERS	30-Jun	31.30	31.70	1.3	1.3	15,197	480,560	252.05	7,989.8	2.2%	1.93	0.92	16.4	2.90	40.83	4.73
ENL LAND (O)	30-Jun	41.65	41.65	0.0	0.0	2,314	96,288	295.85	12,322.0	3.4%	2.81	1.18	14.8	2.8	90.06	3.12
ENL LAND (P)	30-Jun	49.50	49.95	0.9	0.9	1,000	49,950	-	-	0.0%	-	2.80	-	5.61	-	-
TERRA	31-Dec	27.95	27.90	(0.2)	(0.2)	3,400	94,935	227.55	6,348.5	1.8%	0.96	0.85	29.1	3.0	58.41	1.64
UNITED DOCKS	30-Jun	86.50	86.50	0.0	0.0	4,300	371,950	10.56	913.4	0.3%	8.35	-	10.4	-	194.14	-
Leisure & Hotels																
ASL	31-Dec	72.00	68.00	(5.6)	(5.6)	1,400	95,200	3.54	240.4	0.1%	5.38	4.00	12.6	5.9	15.73	34.20
LOTTOTECH	31-Dec	7.30	7.24	(0.8)	(0.8)	9,200	66,098	340.00	2,461.6	0.7%	0.26	0.26	27.8	3.59	0.36	72.22
NMH	30-Sep	24.30	24.60	1.2	1.2	9,750	239,183	484.27	11,913.1	3.3%	-	-	-	-	25.32	-
NMH (P)	30-Jun	12.20	12.35	1.2	1.2	4,300	53,060	-	-	0.0%	-	0.66	-	5.34	-	-
LUX ISLAND RESORTS	30-Jun	69.00	69.50	0.7	0.7	26,742	1,855,198	137.12	9,529.6	2.6%	3.75	1.25	18.5	1.8	42.24	-
SUN RESORTS	31-Dec	48.70	48.70	0.0	0.0	17,305	842,754	194.55	9,474.3	2.6%	-	-	-	-	53.79	-
Property Development																
BLUELIFE LIMITED	31-Dec	2.30	2.36	2.6	2.6	7,000	16,520	425.34	1,003.8	0.3%	-	-	-	-	5.31	-
Sugar																
OMNICANE	31-Dec	55.00	55.00	0.0	0.0	14,201	782,205	67.01	3,685.7	1.0%	2.36	2.00	23.3	3.6	130.59	1.81
Transport																
AIR MAURITIUS	31-Mar	14.60	14.80	1.4	1.4	10,000	145,540	102.31	1,514.1	0.4%	10.60	1.00	1.4	-	43.91	-
Foreign																
DALE CAPITAL GROUP LIMITED	28-Feb	2.36	2.36	0.0	0.0	-	-	65.40	154.3	0.0%	-	-	-	-	0.03	-
Funds/GBL Companies																
Arimo Holdings (Mauritius) Limited (USD) - Intro 15.12.17	31-Dec	11.45	11.45	-	-	-	-	-	-	-	-	-	-	-	-	-
ASTORIA INVESTMENT - (USD)	31-Dec	0.89	0.89	0.0	0.0	-	-	126.81	3,697.1	1.0%	0.03	-	29.7	-	1.06	-
BAYPORT MANAGEMENT - (USD)	30-Jun	4.40	4.40	0.0	0.0	-	-	-	-	-	0.03	-	-	-	6.77	-
Bravura Holdings Ltd - (USD)	30-Jun	0.10	0.10	0.0	0.0	-	-	-	-	-	-	-	-	-	-	-
Dacosbro (USD)	30-Jun	1.00	1.00	0.0	0.0	-	-	-	-	-	-	-	-	-	-	-
GRIT Real Estate Income Group - USD	30-Jun	1.40	1.40	0.0	0.0	620	29,059	208.51	9,772.6	2.7%	0.16	0.12	8.8	8.62	1.38	-
GREENBAY PROPERTIES - (EUR)	30-Jun	0.16	0.16	0.0	0.0	-	-	9,358.6	61,355.4	16.9%	-	0.00	-	1.3	-	-
MAINLAND REAL ESTATE - (GBP)	30-Jun	2.00	2.00	0.0	0.0	-	-	-	-	-	0.03	-	-	-	-	-
NEW FRONTIER PROPERTIES - (GBP)	30-Jun	1.10	1.10	0.0	0.0	-	-	-	-	-	-	0.08	-	6.9	0.78	-
SANLAM AFRICA REAL ESTATE INVESTMENTS (USD)	31-Dec	3.41	3.41	0.0	0.0	-	-	-	-	-	-	0.12	-	3.52	5.72	-
STONEBRIDGE PROPERTIES - (USD)	30-Jun	1.00	1.00	0.0	0.0	-	-	-	-	-	0.37	-	-	-	-	-
TADVEST - (USD)	30-Jun	0.90	0.90	0.0	0.0	-	-	-	-	-	0.25	-	3.6	-	-	-
TREVO CAPITAL PREFERENCE SHARES (ZAR)	30-Jun	13.00	13.00	0.0	0.0	-	-	-	-	-	-	-	-	-	-	-
Universal Partners Ltd (GBP)	30-Jun	1.00	1.00	0.0	0.0	-	-	-	-	-	-	-	-	-	1.00	-
EXCHANGE TRADED FUND(ETF)																
CORESHARES S&P GLOBAL PROPERTY ETF - (USD)	30-Jun	2.59	2.59	0.0	0.0	-	-	-	-	-	-	-	-	-	-	-
CORESHARES S&P 500 ETF - (USD)	30-Jun	2.68	2.73	1.9	1.9	550	50,266	-	-	-	-	-	-	-	-	-
MCB India Sovereign Bond - (USD)	30-Jun	10.50	10.67	1.6	1.6	100	35,559	-	-	-	-	-	-	-	-	-
S&P GIVI SOUTH AFRICA TOP 50 INDEX ETF	30-Jun	120.99	120.99	0.0	0.0	-	-	-	-	-	-	-	-	-	-	-
NEWGOLD	30-Jun	411.00	411.00	0.0	0.0	-	-	-	-	-	-	-	-	-	-	-
DUAL CURRENCY TRADING																
GRIT Real Estate Income Group - (MUR)	30-Jun	46.60	46.60	-	-	-	-	-	-	-	-	-	-	-	-	-
DEPOSITARY RECEIPTS																
Afribank - (USD) - Intro 04.10.17	30-Jun	4.30	4.30	-	-	1,000	144,140	38.6	9,611.7	2.7%	0.19	0.04	23.2	0.9	4.30	-
Total (Equities)						1,134,615	34,323,468		362,156							
Total (Debentures)						-	-		-							
Total (Equities & Debentures)						1,134,615	34,323,468		362,156							

DEM Stocks	Year-end	Last Traded Price		Change for	Change since	Volume	Value	Shares in	Market	Weighted	EPS hist	DPS hist	PER hist	Yield hist	Latest NAV	ROE	
		29/12/2017	05/01/2018	the week (%)	31.12.17 (%)	traded	traded	issue (m)	Cap (Rs m)	Market Cap	(Rs)	(Rs)	(x)	(%)	(Rs)	(%)	
Banks, Insurance & Other Finance																	
ABC BANKING CORPORATION	30-Jun	26.40	26.40	0.0	0.0	3,100	81,840	76.27	2,013.6	3.81%	2.73	0.64	9.7	2.4	17.57	15.54	
SWAN LIFE	31-Dec	1,290.00	1,290.00	0.0	0.0	-	-	2.63	3,395.6	6.43%	69.51	46.00	18.6	3.6	-	-	
Commerce																	
ABC MOTORS	30-Jun	110.00	110.00	0.0	0.0	-	-	6.18	679.3	1.29%	16.60	2.50	6.6	2.3	111.23	14.92	
ASSOCIATED COMMERCIAL	30-Jun	150.00	150.00	0.0	0.0	-	-	1.14	171.4	0.32%	45.66	4.00	3.3	2.7	305.72	14.94	
CHEMCO	31-Dec	19.10	19.10	0.0	0.0	-	-	6.21	118.6	0.22%	2.49	1.10	7.7	5.8	16.83	14.80	
CIE IMMOBILIERE	31-Dec	549.00	549.00	0.0	0.0	-	-	0.27	146.3	0.28%	45.00	21.00	12.2	3.8	1,111.78	4.05	
Industry																	
BYCHEMEX	31-Dec	4.42	4.42	0.0	0.0	-	-	5.00	22.1	0.04%	0.02	0.08	221.0	1.8	6.27	0.32	
FORGES TARDIEU	31-Dec	132.00	132.00	0.0	0.0	-	-	1.92	253.4	0.48%	-	7.50	-	-	172.29	-	
LES GAZ INDUSTRIELS	30-Jun	63.75	63.75	0.0	0.0	-	-	2.61	166.5	0.32%	3.24	2.70	19.7	4.2	92.65	3.50	
LIVESTOCK FEED (O)	30-Jun	39.00	39.00	0.0	0.0	-	-	31.50	1,228.5	2.33%	3.23	1.20	12.1	3.1	46.55	6.94	
LIVESTOCK FEED (P)	30-Jun	25.50	25.50	0.0	0.0	-	-	-	-	0.00%	-	1.20	-	4.7	-	-	
LES MOULINS DE LA CONCORDE (O)	30-Jun	215.00	215.00	0.0	0.0	726	156,090	5.40	1,161.0	2.20%	10.97	8.00	19.6	3.7	274.23	4.00	
LES MOULINS DE LA CONCORDE (P)	30-Jun	335.00	335.00	0.0	0.0	-	-	-	-	0.00%	-	20.00	-	6.0	-	-	
MAURITIUS COSMETICS	31-Dec	35.00	35.00	0.0	0.0	-	-	10.00	350.0	0.66%	10.39	0.50	3.4	1.4	117.58	8.84	
MARGARINE INDUSTRIES	31-Dec	923.00	923.00	0.0	0.0	-	-	0.30	277.1	0.52%	30.91	20.00	29.9	2.2	659.25	4.69	
MAURITIUS SECONDARY INDUSTRIES	30-Jun	29.70	29.70	0.0	0.0	-	-	0.80	23.8	0.05%	4.47	1.00	6.6	3.4	73.31	6.10	
PAPER CONVERTING	31-Dec	27.00	27.00	0.0	0.0	-	-	3.60	97.2	0.18%	2.52	0.50	10.7	1.9	88.20	2.86	
QUALITY BEVERAGE	31-Dec	15.45	15.45	0.0	0.0	500	7,725	22.36	345.5	0.65%	1.70	0.70	9.1	4.5	14.32	-	
SOAP & ALLIED INDUSTRIES	31-Dec	22.75	22.75	0.0	0.0	-	-	4.50	102.3	0.19%	3.71	1.00	6.1	4.4	52.01	7.13	
Investments																	
ASCENCIA Ltd (Class A Shares)	30-Sep	15.65	15.65	0.0	0.0	3,000	46,950	432.77	6,772.9	12.83%	2.03	0.50	7.7	3.2	14.11	14.39	
Ascencia Ltd (Preference Shares)	30-Jun	19.00	18.70	-	-	3,100	58,300	-	-	-	-	0.79	-	-	-	-	
ENL LTD (P)	30-Jun	29.25	29.25	0.0	0.0	-	-	-	-	0.00%	2.18	0.69	13.4	2.4	80.38	-	
EUDCOS	30-Jun	20.15	20.15	0.0	0.0	4,469	90,050	121.45	2,447.3	4.64%	1.21	0.90	16.7	4.5	15.15	7.99	
THE BEE EQUITY PARTNERS	30-Jun	29.25	30.95	5.8	5.8	9,000	269,350	8.82	273.0	0.52%	5.04	-	6.1	-	57.71	26.12	
PHOENIX INVESTMENT	30-Jun	305.00	305.00	0.0	0.0	200	61,000	5.69	1,734.0	3.28%	21.15	8.72	14.4	2.9	191.06	11.07	
RHT HOLDING LTD	30-Jun	32.50	33.50	3.1	3.1	1,100	36,350	12.16	407.4	0.77%	3.06	1.15	10.9	3.4	59.25	-	
UNITED INVESTMENT	30-Jun	10.00	10.00	0.0	0.0	99	990	204.09	2,040.9	3.87%	-	-	-	-	11.59	-	
Leisure & Hotels																	
CONSTANCE HOTELS SERVICES	31-Dec	32.05	32.05	0.0	0.0	2,071	66,301	109.65	3,514.4	6.66%	-	0.65	-	2.0	41.98	-	
MORNING LIGHT	31-Dec	41.20	41.20	0.0	0.0	-	-	45.96	1,893.6	3.59%	-	-	-	-	21.84	-	
SOUTHERN CROSS TOURIST HOTEL	31-Dec	4.61	4.61	0.0	0.0	1	5	125.64	579.2	1.10%	0.08	-	57.6	-	3.19	-	
TROPICAL PARADISE (O)	30-Jun	6.10	6.10	0.0	0.0	-	-	142.50	869.3	1.65%	0.21	0.07	29.0	1.1	10.80	-	
TROPICAL PARADISE (P)	30-Jun	309.00	309.00	0.0	0.0	-	-	-	-	0.00%	-	16.00	-	5.2	-	-	
Others																	
COVIFRA	31-Oct	22.15	22.15	0.0	0.0	-	-	56.61	1,253.9	2.38%	0.82	4.70	27.0	-	18.88	-	
CIEL TEXTILE LTD	30-Jun	49.00	49.00	0.0	0.0	-	-	101.81	4,988.6	9.45%	4.51	3.00	10.9	6.1	43.62	10.34	
HOTELEST	31-Dec	30.75	30.75	0.0	0.0	-	-	55.92	1,719.6	3.26%	-	0.61	-	2.0	41.96	-	
MEDICAL & SURGICAL CENTRE	30-Jun	3.20	3.22	0.6	0.6	34,100	102,466	569.94	1,835.2	3.48%	-	0.03	-	0.9	1.21	-	
MFD Group Ltd	31-Dec	10.60	10.60	0.0	0.0	-	-	150.00	1,590.0	3.01%	0.82	0.20	12.9	1.9	7.91	10.37	
SIT LAND HOLDINGS OPT	30-Jun	18,000.00	16,300.00	(9.4)	(9.4)	9	150,490	-	-	-	-	-	-	-	-	-	
Property Development																	
ATTITUDE PROPERTY		12.20	12.20	0.0	0.0	10,000	122,000	160.02	1,952.21	3.7%	0.66	0.65	18.5	5.3	10.42	6.33	
NOVUS PROPERTIES	31-Mar	8.50	8.50	0.0	0.0	-	-	-	-	-	0.48	0.38	17.7	4.5	9.62	4.99	
Sugar																	
CONSTANCE LA GALETTE	31-Dec	121.00	121.00	0.0	0.0	43	5,203	4.80	580.8	1.1%	7.98	4.50	15.2	3.7	103.68	-	
MEDINE LTD	30-Jun	67.00	68.00	1.5	1.5	200	13,600	105.00	7,140.0	13.52%	0.73	2.10	93.2	3.1	150.39	-	
UNION SUGAR ESTATE	31-Dec	25.60	25.60	0.0	0.0	20	510	18.90	483.8	0.92%	0.22	-	116.36	-	94.12	-	
Transport																	
UNITED BUS SERVICE	30-Jun	33.50	33.50	0.0	0.0	-	-	4.97	166.5	0.32%	10.08	1.00	3.3	3.0	42.25	23.86	
Total (Equities)						71,738	1,269,220		52,795								
Total (Debentures)																	
Total (Equities & Debentures)						71,738	1,269,219.98										

Debentures	Nominal Value	Last Traded Price		Volume	Value Traded	YTM on last	Accrued	Issue	Maturity
	(Rs)	29/12/2017	05/01/2018	Traded	(Rs)	traded price (%)	Interest (Rs)	Date	Date
OFFICIAL MARKET									
Structured Products									
MCB Structured Solutions Ltd - Crescendo Global Security USD70 N	100.00	112.00	112.00	-	-	-	-	6-May-16	6-May-21
MCB Structured Solutions Ltd - Crescendo Global Security MUR170	1,000.00	1,150.00	1,150.00	-	-	-	-	6-May-16	6-May-21
MCB Structured Solutions Ltd - Crescendo Global Security MUR100	1,000.00	1,150.00	1,150.00	-	-	-	-	6-May-16	6-May-21
Debentures									
Compagnie de Beau Vallon Limitée - Class A Bonds	1,000.00	981.76	981.76	-	-	5.25	9.45	27-Oct-15	27-Oct-20
Compagnie de Beau Vallon Limitée - Class B Bonds	1,000.00	997.68	997.68	-	-	5.19	10.48	27-Oct-15	27-Oct-20
Commercial Investment Property Fund Ltd - Senior Tranche	100,000.00	101,144.91	101,144.91	-	-	5.84	165.75	12-Jan-17	12-Jan-27
Commercial Investment Property Fund Ltd - Junior Tranche	1,000.00	1,000.03	1,000.03	-	-	6.50	1.96	12-Jan-17	12-Jan-27
Evaco Ltd - Floating Rate Notes - INTRO - 01.07.16	1,000.00	1,029.61	1,029.61	-	-	5.56	4.63	17-Jun-16	16-Jun-21
IBL Ltd - Series 2 - Fixed Rate Notes - 5 Years - Intro 05.10.17	1,000,000.00	1,028,295.33	1,028,295.33	-	-	4.34	17,127.07	8-Sep-17	8-Sep-22
IBL Ltd - Series 3 - Floating Rate Notes - 5 Years - Intro 05.10.17	1,000,000.00	1,010,673.97	1,010,673.97	-	-	4.00	14,558.01	8-Sep-17	8-Sep-22
IBL Ltd - Series 4 - Fixed Rate Notes - 7 Years - Intro 05.10.17	1,000,000.00	1,039,384.30	1,039,384.30	-	-	4.81	18,839.78	8-Sep-17	8-Sep-24
IBL Ltd - Series 5 - Floating Rate Notes - 7 Years - Intro 05.10.17	1,000,000.00	1,025,612.77	1,025,612.77	-	-	4.31	16,270.72	8-Sep-17	8-Sep-24
MCB GROUP - NOTES	1,000.00	1,037.52	1,037.52	-	-	4.09	8.37	8-Aug-13	8-Aug-23
MAURITIUS UNION ASSURANCE - NOTES	10,000.00	10,146.73	10,146.73	-	-	5.09	158.30	24-Sep-14	24-Sep-24
New Mauritius Hotels Ltd - Notes -Tranche FLRNMUR7Y - Intro 20.11.17	1,000.00	1,065.00	1,065.00	-	-	3.84	7.52	15-Nov-17	15-Nov-22
New Mauritius Hotels Ltd - Notes -Tranche FRNMUR7Y -Intro 20.11.17	1,000.00	1,059.10	1,059.10	-	-	4.41	8.28	15-Nov-17	15-Nov-22
New Mauritius Hotels Ltd - Notes -Tranche FLRNMUR5Y -Intro 20.11.17	1,000.00	1,004.39	1,004.39	-	-	4.25	6.67	15-Nov-17	15-Nov-24
New Mauritius Hotels Ltd - Notes -Tranche FRNMUR5Y - Intro 20.11.17	1,000.00	1,033.43	1,033.43	-	-	4.00	7.29	15-Nov-17	15-Nov-24
New Mauritius Hotels Ltd - Notes -Tranche FRNEUR4Y - Intro 20.11.17	1,000.00	1,063.00	1,063.00	-	-	1.72	5.14	15-Nov-17	15-Nov-21
NMH - FLOATING RATE TRANCHE A NOTES - (MUR)	1,000.00	1,000.00	1,000.00	-	-	5.75	24.51	15-Jul-15	15-Jul-18
NMH - FLOATING RATE TRANCHE B NOTES - (MUR)	1,000.00	1,005.02	1,005.02	-	-	5.00	26.96	15-Jul-15	15-Jul-19
Northfields International School Ltd - (secured 7.75% fixed Rate) - 21.06.17	1,000.00	1,000.61	1,000.61	-	-	7.72	28.03	1-Sep-16	31-Aug-21
Omicane Ltd - Series 1 - Floating Rate Secured Notes	10,000.00	9,996.78	9,996.78	-	-	4.81	56.55	8-Jun-16	8-Jun-19
Omicane Ltd - Series 2 - Floating Rate Secured Notes	10,000.00	10,043.00	10,043.00	-	-	5.09	61.81	8-Jun-16	8-Jun-21
Omicane Ltd - Series 3 - Fixed Rate Secured Notes	10,000.00	10,333.41	10,333.41	-	-	5.25	82.85	8-Jun-16	8-Jun-21
Omicane Ltd - Series 4 - Fixed Rate Secured Notes	10,000.00	10,625.31	10,625.31	-	-	5.66	89.42	8-Jun-16	8-Jun-23
SBM HOLDINGS LTD - CLASS A 1 SERIES BOND (MUR)	10,000.00	10,052.46	10,052.46	-	-	4.75	161.67	10-Mar-14	10-Mar-24
SBM HOLDINGS LTD - CLASS B 1 SERIES BOND (USD)	1,000.00	990.48	990.48	-	-	3.28	3.38	30-May-14	30-May-21
Sun Limited - Notes -Tranche FRNMUR5Y	1,000.00	1,045.12	1,045.12	-	-	4.75	11.01	4-Nov-16	4-Nov-21
Sun Limited - Notes -Tranche FLRNMUR5Y	1,000.00	1,025.33	1,025.33	-	-	4.09	8.81	4-Nov-16	4-Nov-21
Sun Limited - Notes -Tranche FRNMUR7Y	1,000.00	1,052.00	1,052.00	-	-	5.47	11.93	4-Nov-16	4-Nov-23
Sun Limited - Notes -Tranche FLRNMUR7Y	1,000.00	1,055.95	1,055.95	-	-	4.69	9.55	4-Nov-16	4-Nov-23
Sun Limited - Notes -Tranche FRNEUR4Y	1,000.00	1,041.25	1,041.25	-	-	2.97	8.33	4-Nov-16	4-Nov-20
Sun Limited - Notes -Tranche FLRNEUR4Y	1,000.00	1,041.85	1,041.85	-	-	2.50	7.40	4-Nov-16	4-Nov-20
UNITED BASALT PRODUCTS - BOND	100.00	100.41	100.41	-	-	4.22	0.13	31-Oct-13	31-Oct-18
DEM									
ABC Motors Company - Notes	25,000.00	26,003.26	26,003.26	-	-	2.28	1,434.25	28-Jan-16	27-Jan-19
ASCENCIA - BONDS	12.00	12.83	12.83	-	-	4.88	0.39	8-Dec-15	30-Jun-25
United Investments Ltd - Bond	100.00	102.65	102.65	-	-	4.50	2.70	1-Feb-16	31-Jan-20