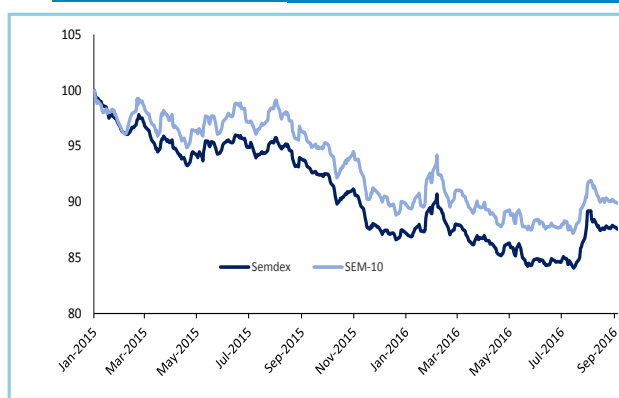


Market Highlights

INDICES	LATEST	W-O-W % CHANGE	YTD % CHANGE
LOCAL (Friday's closing)			
SEMDEX	1,810.68	(0.49)	(0.02)
SEM-10	345.17	(0.56)	(0.34)
DEMEX	197.24	0.52	(1.1)
REGIONAL (Thursday's closing)			
FTSE/JSE (SOUTH AFRICA)	53,250.25	0.98	4.5
NGSE (NIGERIA)	27,522.62	(0.3)	2.8
EGX 30 (EGYPT)	8,146.10	(0.1)	16.7
NSEASI (KENYA)	130.75	(3.1)	(9.2)
BGSMDC (BOTSWANA)	9,618.75	0.5	(9.3)
GGSECI (GHANA)	1,795.08	(0.6)	(9.7)
INTERNATIONAL (Thursday's closing)			
DOW JONES	18,526.14	0.7	4.5
CAC 40	4,542.20	2.3	(3.4)
SENSEX	29,045.28	2.2	11.9
DAX	10,675.29	1.3	(1.7)
NIKKEI	16,958.77	0.2	(10.7)
FTSE 100	6,858.70	1.7	8.6

	%
GDP GROWTH (2016) by Statistics Mauritius	3.9
UNEMPLOYMENT RATE (2015)	7.9
CPI HEADLINE INFLATION	0.9
BUDGET DEFICIT (% of GDP) – Jul 2015/Jun 2016	3.6
REPO RATE (20 th July 2016)	4.00
91 DAY T-BILLS	2.17
182 DAY T-BILLS	2.53
364 DAY T-BILLS	2.63
5-YEAR GOVT BONDS	3.89

FOREX	LATEST	W-O-W % CHANGE	YTD % CHANGE
MUR/US\$	35.38	0.2	-2.0
MUR/GBP	46.99	0.7	-12.2
MUR/INR	0.53	0.0	-2.8
MUR/JPY	34.08	-2.3	14.4
MUR/ZAR	2.42	-2.2	4.8
MUR/EURO	39.63	-0.4	0.4



Highlights

- ▶ **Banks:** MCBG +0.1%; SBMH Unch.
- ▶ **Hotels:** NMH -0.2%; LUX Island Resorts -0.4%; Sun Resorts -0.3%
- ▶ **Accounts:** ENL Commercial, Rogers

Research Desk

Email: securities.research@swanforlife.com

Swan Securities Ltd

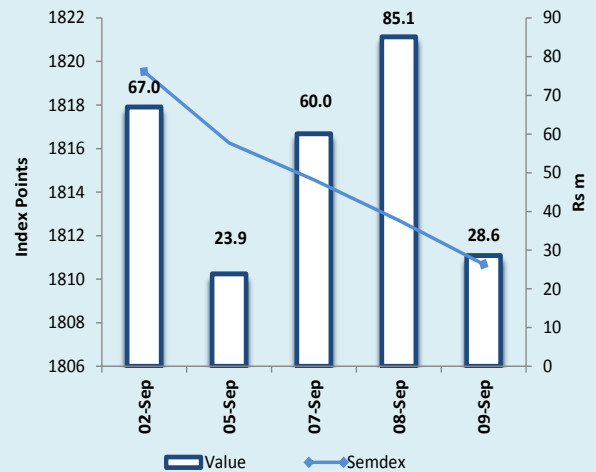
Swan Centre
10 Intendance Street
Port Louis, Mauritius

T (230) 208 7010
F (230) 212 9867
W swanforlife.com

BRN C06007932

This document may not be reproduced, copied, distributed for any purpose without the prior consent of Swan Securities Ltd. The information and opinions contained in this document have been completed or arrived at by Swan Securities Ltd from sources believed to be reliable and in good faith, but no representation or warranty express or implied is made as to their accuracy completeness or correctness. The information contained in this document is published for the assistance of recipients but is not to be relied upon as being authoritative or taken as substitution for the exercise of judgments by any recipient. Swan Securities Ltd accepts no liability whatsoever for any direct or consequential loss arising from any use of this document and its contents.

	Wk/ending 02.09.2016	Wk/ending 09.09.2016
SECTORAL INDICES		
BANKING INDEX	2,786.48	2,786.20
HOTEL INDEX	279.82	278.11
FOREIGN TRANSACTIONS (Rsm)		
TOTAL FOREIGN PURCHASES	202.52	90.37
TOTAL FOREIGN SALES	304.63	174.44
NET FOREIGN INFLOW/(OUTFLOW)	(102.11)	(84.07)
MARKET CAPITALISATION (Rsbm)		
OFFICIAL & DEM	263.57	262.74
DIVIDEND YIELD (%)		
OFFICIAL MARKET	4.09	4.10
PER(x)		
OFFICIAL MARKET	12.34	12.37



News

Accounts:

ENL Commercial - The group saw higher losses of Rs 41m compared to Rs 9m in 2015, attributable to downward pressure on margins, underperformance of some business lines, lower sales of sunglasses and one-off costs of some Rs 23m.

Rogers - Group revenue for the year ended 30 June 2016 improved by 14.2% to Rs 8.2bn (2015: Rs 7.2bn). Profit After Tax (PAT) for the year, excluding exceptional items, was Rs 787m (2015: Rs 973m). This year's result includes the consolidation of Bagaprop as a subsidiary with consequential increases both in finance costs and fair value gains. Earnings attributable to shareholders for the year went down by 26% to Rs 405m.

Official Market

Indices posted negative performance for the week with the **Semdex** declining to 1,810.68 points (-0.49%) and the **Sem-10** declining to 345.17 points (-0.56%). **Turnover** for the week amounted to Rs197.6m, geared mainly towards MCBG which accounted for 82.1% of TMT. **Foreign investors** were net sellers to the tune of Rs84.1m with MCBG witnessing major foreign sales.

MCBG closed the week slightly higher at Rs207.75 (+0.1%) on a total of 781.8k shares (VWAP: Rs207.56). The stock saw a net foreign outflow of Rs71.2m. Banking peer **SBMH** ended the week flat. Finance company **CIM** maintained downward trend, losing 1.4% to Rs7.12 on 612.1k shares exchanged.

On the commerce counter, **ENL Commercial** was the sole mover, down by 3.2% to Rs 15.00 on just 500 shares.

Gamma was the weakest performer on the industrial counter, losing 3.7% to Rs23.60 on 11.6k shares. **PBL** was slightly down by 0.1% to Rs 420.00 on only 525 shares. Gainers on the counter were **UBP** (+0.6%) and **MOROIL** (+0.2%).

On the investment counter, the top gainer was **Fincorp** which ended the week at Rs20.90 (+2.7%) on just 1.7k shares. Other gainers were: **MDIT** (+0.5%) and **Terra** (+0.2%). **United Docks** and **Alteo** were the weakest investment stock down by 3.3% and 3.0% respectively. **Rogers** lost 2.5% to Rs 29.25 on 21.4k shares. **ENL Land (O)** dropped by 2.4% to Rs 43.50 on 15.3k shares.

On the hotel segment, there were no gainers. **LUX** lost 0.4% to Rs 59.75 on 154.9k shares. **Sun** and **NMH** declined by 0.3% and 0.2% respectively. Leisure stock **Lottotech** fell by 5.1% to Rs 4.25 on 37.6k shares.

Property developer **BlueLife** dropped to Rs2.26 (-3.8%) while **Omnican** went up by 0.8% to Rs 64.00 on 2.2k shares.

National carrier **Air Mauritius** reached Rs13.75 (+0.7%) on a total of 35.9k shares traded.

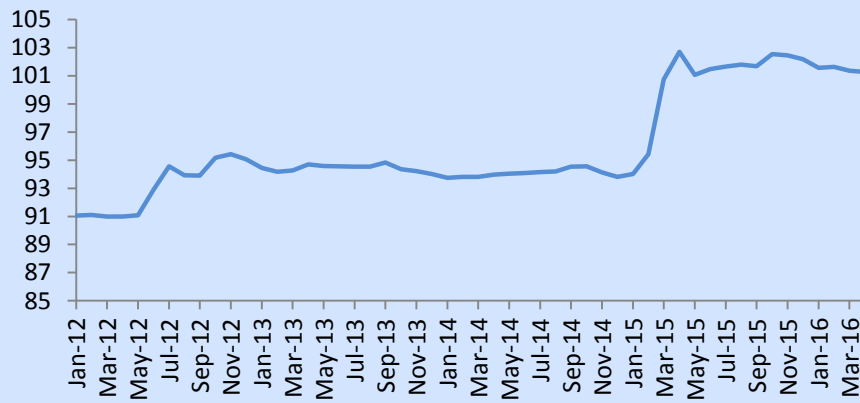
DEM

On the DEM counter, the **Demex** reached 197.24 points (+0.52%) on a total turnover of Rs27.8m mainly geared towards **Medine** which accounted for 75.62% of TMT. The latter closed unchanged at Rs60.00 on a volume of 350.8k shares. On the industry counter, **QBL** was the sole mover up by 0.3% to Rs7.28 on 200 shares. On the investment counter, **Ascencia (Class A)** and **EUDCOS** were up by 2.9% and 0.7% to Rs12.50 and Rs15.10 respectively. Other movers were **Morning light** Rs41.65 (-0.4%), **CIEL Textile** Rs41.50 (+1.8%) and **Hotelest** Rs30.20 (+0.3%).

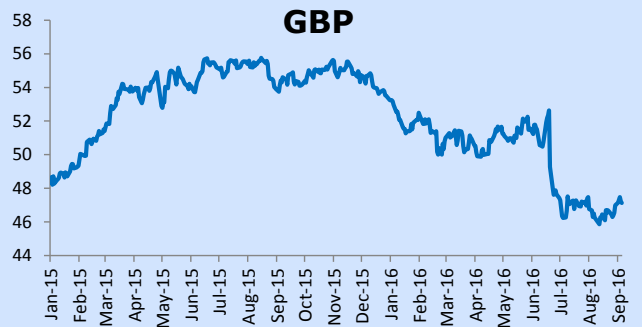
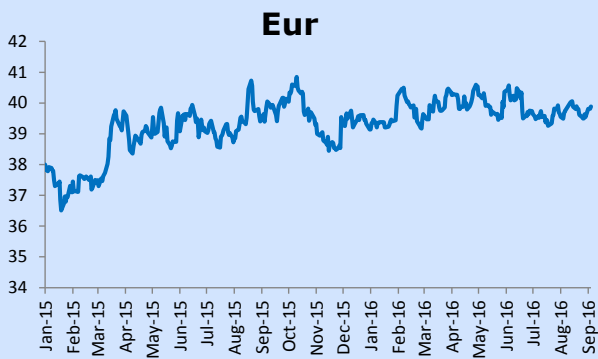
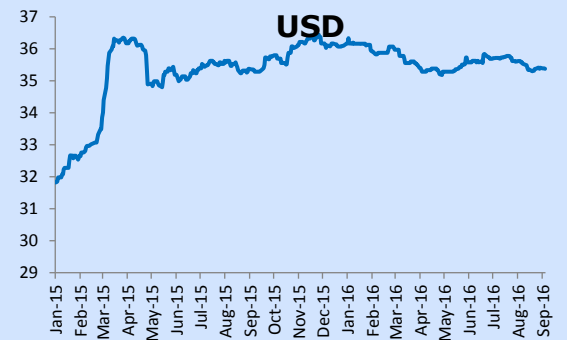
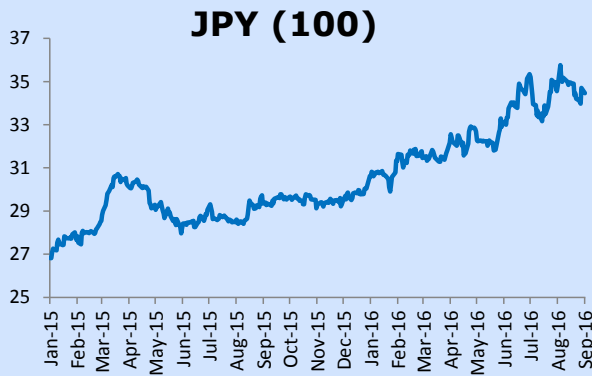
Dividend Announcements

Company	Financial Year	Amount Rs	Last cum date	Payment date
OFFICIAL MARKET				
MDIT	30-Jun-16	0.13	13-Sep-16	28-Sep-16
Mara Delta Property	30-Jun-16	USD 0.0558	20-Sep-16	3-Sep-16
DEM				

Mauritius Exchange Rate Index



Forex



Sector/Stock	Year-end	Last Traded Price	Last Traded Price	Change for	Change since	Volume	Value	Shares	Market	Weighted	EPS hist	DPS hist	PER hist	Yield hist	Latest NAV	ROE	
		02.09.2016	09.09.2016	the week(%)	31.12.15 (%)	traded	traded	In Issue(m)	Cap (Rs m)	Market cap	(Rs)	(Rs)	(x)	(%)	(Rs)	(%)	
Bank, Insurance & Other Finance																	
BRAMER BANKING	31-Dec	Suspended	Suspended	0.0	0.0	-	-	901.29	3,875.6	1.8%	-	-	47.78	-	1.45	-	
CIM FINANCIAL SERVICES	30-Sep	7.22	7.12	(1.4)	(10.6)	612,067	4,300,137	680.52	4,845.3	2.2%	0.84	0.31	8.5	4.35	5.06	16.60	
MCB Group	30-Jun	207.50	207.75	0.1	(0.2)	781,840	162,277,983	238.19	49,483.4	22.8%	24.04	8.00	8.6	3.9	166.07	14.48	
NBEI	30-Jun	83.75	83.75	0.0	(6.8)	-	-	8.00	670.0	0.3%	0.82	1.10	102.1	1.3	85.13	0.96	
MJA	31-Dec	63.25	63.25	0.0	0.4	1,300	82,225	45.09	2,851.9	1.3%	5.88	2.20	10.8	4.0	49.55	11.87	
SBM HOLDINGS	31-Dec	0.69	0.69	0.0	(2.8)	7,029,800	4,842,533	30,374.02	20,958.1	9.6%	0.06	0.04	11.1	5.8	0.86	7.25	
SWAN GENERAL	31-Dec	300.00	300.00	0.0	(28.6)	421	126,300	8.28	2,482.7	1.1%	31.11	12.00	9.6	4.0	280.52	11.09	
Consumer																	
CMPL	31-Dec	9.80	9.80	0.0	(36.6)	-	-	16.29	159.7	0.1%	-	-	-	-	-	-	
ENL COMMERCIAL	30-Jun	15.50	15.00	(3.2)	(18.3)	500	7,500	29.17	437.6	0.2%	-	0.90	-	6.00	24.24	-	
H MALLAC	31-Dec	76.75	76.75	0.0	(17.5)	-	-	11.26	864.2	0.4%	-	1.80	-	2.3	148.90	-	
INNODIS	30-Jun	39.50	39.50	0.0	(7.1)	300	11,850	36.73	1,450.8	0.7%	3.18	1.85	12.4	4.7	47.25	6.73	
IBL Ltd	30-Jun	29.90	29.90	0.0	-	25,492	760,907	680.22	20,338.7	9.4%	-	-	-	-	82.18	-	
VIVO ENERGY	31-Dec	108.00	108.00	0.0	8.0	733	79,179	29.32	3,166.8	1.5%	9.64	4.80	11.2	4.4	26.26	36.71	
Industry																	
GAMMA CIVIC	31-Dec	24.50	23.60	(3.7)	(9.2)	11,630	276,640	133.25	3,144.7	1.4%	1.07	0.90	22.1	3.8	18.55	5.77	
GOLIFE INTERNATIONAL PCC (USD)	28-Feb	0.03	0.03	0.0	0.0	-	-	900.00	957.7	0.4%	-	-	-	-	0.01	-	
PBL	30-Jun	420.25	420.00	(0.1)	9.7	525	220,500	16.45	6,907.7	3.2%	19.52	9.60	21.5	2.3	203.25	9.60	
MCFI	30-Jun	17.15	17.15	0.0	(11.1)	1,400	24,010	22.01	377.4	0.2%	0.11	0.70	155.9	4.1	31.92	0.34	
MOROIL	30-Jun	26.00	26.05	0.2	4.2	10,000	260,500	33.28	867.0	0.4%	1.43	1.30	18.2	5.0	11.64	12.29	
PIM	30-Jun	64.25	64.25	0.0	(4.5)	-	-	2.00	128.5	0.1%	7.20	3.50	8.9	5.4	54.44	13.23	
UBP	30-Jun	85.00	85.50	0.6	13.6	478	40,702	26.51	2,266.6	1.0%	2.56	3.00	33.4	3.5	106.70	2.40	
Investments																	
ALANTIC LEAF PROPERTIES - (GBP)	28-Feb	1.10	1.10	0.0	(1.8)	-	-	-	-	0.0%	0.09	0.07	12.6	6.4	-	-	
ALTD LIMITED	30-Jun	29.75	28.85	(3.0)	(6.2)	12,549	365,022	318.49	9,188.5	4.2%	2.17	0.80	13.3	2.8	53.05	-	
BMH	31-Dec	25.60	25.60	0.0	4.1	10	260	60.45	1,547.4	0.7%	0.80	0.80	32.0	3.1	43.59	1.84	
CAUDAN	30-Jun	1.03	1.02	(1.0)	(5.7)	2,500	2,500	2,500.00	2,040.0	0.3%	0.00	0.00	784.6	-	3.56	-	
CIEL LIMITED	30-Jun	6.10	6.10	0.0	(7.6)	254,115	1,550,102	1,576.18	9,614.7	4.4%	0.70	0.18	8.7	3.0	9.06	-	
FINCORP	30-Jun	20.35	20.90	2.7	15.5	1,715	35,815	103.36	2,160.1	1.0%	0.65	0.60	32.2	2.9	37.10	-	
MDT	30-Jun	4.14	4.16	0.5	(10.5)	113,293	474,839	423.39	1,761.3	0.8%	0.26	0.32	16.0	7.7	3.56	-	
NIT	30-Jun	38.50	38.50	0.0	(2.5)	37,322	1,436,918	13.70	527.5	0.2%	0.91	1.65	42.3	4.3	70.45	-	
PAD	30-Jun	95.00	95.00	0.0	4.4	9,150	855,144	38.94	3,698.9	1.7%	1.56	3.00	60.9	3.2	192.83	-	
POLICY	31-Dec	6.10	5.96	(2.3)	(8.3)	9,698	58,640	226.99	1,352.8	0.6%	0.20	0.35	29.8	5.9	5.12	3.91	
ROCKCASTLE (USD)	31-Mar	2.26	2.26	0.0	2.7	-	-	-	-	0.0%	0.09	0.05	25.7	2.0	1.70	-	
ROGERS	30-Sep	30.00	29.25	(2.5)	6.4	21,391	626,685	252.05	7,372.3	3.4%	1.86	0.88	15.7	3.0	38.37	4.85	
ENL LAND (Q)	30-Jun	44.55	43.50	(2.4)	(5.4)	15,300	663,480	295.85	12,869.3	-	5.9%	2.21	1.32	19.7	3.0	86.32	2.56
ENL LAND (P)	30-Jun	42.90	42.90	0.0	9.3	-	-	-	-	0.0%	-	-	-	6.5	-	-	
TERRA	31-Dec	30.00	30.05	0.2	5.4	10,506	315,430	227.55	6,837.7	3.1%	2.62	0.85	11.5	2.8	73.29	3.57	
UNITED DOCKS	30-Jun	60.75	58.75	(3.3)	(21.7)	300	17,625	10.56	620.4	0.3%	5.14	-	11.4	-	186.50	-	
Leisure & Hotels																	
ASL	31-Dec	63.00	63.00	0.0	80.0	50	3,000	3.54	222.7	0.1%	6.76	3.00	9.3	4.8	17.99	37.57	
OTTOTECH	31-Dec	4.48	4.25	(5.1)	20.7	425	163,066	340.00	1,445.0	0.7%	0.12	0.12	35.4	0.12	0.46	26.26	
NHM	30-Sep	20.40	20.35	(0.2)	17.0	213,380	4,343,846	484.27	9,854.9	4.5%	0.35	0.23	58.1	1.6	28.18	-	
NMH (P)	30-Jun	11.95	11.75	(1.7)	2.2	20,478	241,870	-	-	-	-	0.33	-	2.8	-	-	
LUX ISLAND RESORTS	30-Jun	60.00	59.75	(0.4)	0.4	154,941	9,237,934	136.91	8,180.3	3.8%	2.94	1.15	20.3	1.9	58.68	-	
SUN RESORTS	31-Dec	34.00	33.90	(0.3)	(0.6)	31,323	1,064,974	146.73	4,974.2	2.3%	3.89	-	8.7	-	53.62	-	
Property Development																	
BLULIFE LIMITED	31-Dec	2.35	2.26	(3.8)	(38.8)	34,633	78,304	425.34	961.3	0.2%	-	-	-	-	6.61	-	
Steel																	
OMNICANE	31-Dec	63.50	64.00	0.8	(8.6)	2,150	136,850	67.01	4,288.8	2.0%	3.45	2.50	18.6	3.9	127.18	2.71	
Transport																	
AIR MAURITIUS	31-Mar	13.65	13.75	0.7	25.0	35,938	492,913	102.31	1,406.7	0.6%	6.37	-	-	-	33.45	-	
Foreign																	
DALE CAPITAL GROUP LIMITED	28-Feb	2.80	2.80	0.0	0.0	-	-	56.21	157.4	0.1%	-	-	-	-	0.03	-	
Funds/GBL Companies																	
ASTORIA INVESTMENT - USD	31-Dec	1.00	1.00	0.0	0.0	-	-	-	-	0.0%	-	-	-	-	0.96	-	
BAYPORT MANAGEMENT - (USD)	31-Dec	4.40	4.40	0.0	0.0	-	-	-	-	0.0%	-	-	-	-	6.01	-	
CMB INTERNATIONAL - USD	31-Dec	0.10	0.10	0.0	0.0	-	-	-	-	0.0%	0.03	-	-	-	-	-	
MARA DELTA PROPERTY HOLDINGS - USD	30-Jun	1.74	1.74	0.0	(0.6)	-	-	-	-	0.0%	0.00	0.11	446.2	6.5	1.69	-	
GREENBAY PROPERTIES - GBP	30-Jun	0.08	0.08	0.0	0.0	-	-	-	-	0.0%	-	-	-	-	-	-	
MAINLAND REAL ESTATE - GBP	30-Jun	2.00	2.00	0.0	0.0	-	-	-	-	0.0%	-	-	-	-	-	-	
NEW FRONTIER PROPERTIES - GBP	30-Jun	1.20	1.20	0.0	0.0	-	-	-	-	0.0%	0.01	0.03	92.3	2.5	0.78	-	
SANLAM AFRICA CORE REAL ESTATE INVESTMENTS CLASS A - USD	31-Dec	3.80	3.80	0.0	(30.9)	-	-	-	-	0.0%	-	0.17	-	4.5	5.79	-	
STONEBRIDGE PROPERTIES - USD	31-Dec	1.00	1.00	0.0	0.0	-	-	-	-	0.0%	-	-	-	-	-	-	
TADVEST - USD	31-Dec	0.90	0.90	0.0	0.0	-	-	-	-	0.0%	-	-	-	-	-	-	
TREVO CAPITAL PREFERENCE SHARES - ZAR	31-Dec	13.00	13.00	0.0	0.0	-	-	-	-	0.0%	-	-	-	-	-	-	
Universal Property Ltd (GBP)	31-Dec	1.00	1.00	0.0	0.0	-	-	-	-	0.0%	-	-	-	-	-	-	
EXCHANGE TRADED FUNDS (ETF)																	
CORESHARES S&P GLOBAL PROPERTY ETF - USD	31-Dec	2.66	2.70	1.5	0.0	-	-	-	-	0.0%	-	-	-	-	-	-	
CORESHARES S&P 500 ETF - USD	31-Dec	2.18	2.19	0.5	0.0	-	-	-	-	0.0%	-	-	-	-	-	-	
MCB India Sovereign Bond (Fixed Income)-(USD)	31-Dec	10.36	10.46	1.0	0.0	-	-	-	-	0.0%	-	-	-	-	-	-	
S&P GIVI SOUTH AFRICA TOP 50 INDEX ETF PORTFOLIO	31-Dec	114.76	122.33	6.6	(16.8)	-	-	-	-	0.0%	-	-	-	-	-	-	
NEWGOLD	31-Dec	439.52	450.10	2.4	18.1	-	-	-	-	0.0%	-	-	-	-	-	-	
NEWPLAT	31-Dec	365.22	378.05	3.5	(12.9)	-	-	-	-	0.0%	-	-	-	-	-	-	
Total						9,496,960	197,615,290		217,317								

Code	Debtentures	Nominal Value (Rs)	Price 02.09.2016	Price 09.09.2016	Volume Traded	Value Traded (Rs)	YTM on last traded price (%)	Accrued Interest (Rs)	Issue Date	Maturity Date
ASN.D0001	ABSA BANK - CREDIT LINKED NOTES 1 - USD	100,000.00	99,513.92	99,513.92	-	-	3.99	150.41	11-Jun-15	1-Sep-17
ASN.D0002	ABSA BANK - CREDIT LINKED NOTES 2 - USD	100,000.00	100,000.00	100,000.00	-	-	4.78	940.24	23-Jun-15	8-Oct-19
CBVL.D0105	Compagnie de Beau Vallon Limitee - Class A Bonds	1,000.00	994.25	994.25	-	-	5.25	19.64	27-Oct-15	27-Oct-20
CBVL.D0205	Compagnie de Beau Vallon Limitee - Class B Bonds	1,000.00	1,000.06	1,000.06	-	-	5.59	21.48	27-Oct-15	27-Oct-20
EVAC.D2105	Evaco Ltd - Floating Rate Notes - INTRD - 01.07.16	1,000.00	1,043.11	1,043.11	-	-	5.97	16.48	17-Jun-16	16-Jun-21
MCBG.D2023	MCB GROUP - NOTES	1,000.00	1,014.75	1,016.53	105	106,736	5.09	4.54	8-Aug-13	8-Aug-23
MJA.D2124	MAURITIUS UNION ASSURANCE - NOTES	10,000.00	10,509.02	10,509.02	-	-	5.47</			

Sector/Stock	Year-end	Last Traded Price	Last Traded Price	Change for	Change since	Volume	Value	Shares	Market	Weighted	EPS hist	DPS hist	PER hist	Yield hist	Latest NAV	ROE
		02.09.2016	09.09.2016	the week(%)	31.12.15 (%)	traded	traded	in issue(m)	Cap (Rm)	Market cap	(Rs)	(Rs)	(x)	(%)	(Rs)	(%)
Banks, Insurance & Other Finance																
ABC BANKING CORPORATION	30-Jun	18.00	18.00	0.0	0.0	2,300	41,400	76.27	1,372.9	3.02%	1.6	0.17	11.3	0.9	11.27	14.20
SWAN LIFE	31-Dec	1,060.00	1,060.00	0.0	6.0	100	106,000	2.63	2,790.1	6.14%	62.91	46.00	16.8	4.3	-	-
Commerce																
ABC MOTORS	30-Jun	85.50	85.50	0.0	0.6	-	-	6.18	528.0	1.16%	10.32	1.50	8.3	1.8	96.32	10.71
ASSOCIATED COMMERCIAL	30-Jun	153.00	153.00	0.0	0.0	-	-	1.14	174.9	0.38%	27.15	4.00	5.6	2.6	263.15	10.32
CHEMCO	31-Dec	16.95	16.95	0.0	(10.8)	-	-	6.21	105.2	0.23%	0.66	1.10	25.7	6.5	16.48	4.00
CIE IMMOBILIERE	31-Dec	444.25	444.25	0.0	5.0	-	-	0.27	118.3	0.26%	31.63	20.00	14.0	4.5	1,091.53	2.90
Information Communication & Technology																
BHARAT TELECOM	31-Mar	6.36	6.36	0.0	(25.2)	-	-	19.14	121.7	0.27%	-	-	-	-	0.47	-
Industry																
BYCHEMEX	31-Dec	4.18	4.18	0.0	(38.0)	-	-	5.00	20.9	0.05%	0.01	0.10	418.0	2.4	5.84	0.17
FORGES TARDIEU	31-Dec	148.00	148.00	0.0	5.9	-	-	1.92	284.2	0.63%	26.66	-	-	-	195.37	-
LES GAZ INDUSTRIELS	30-Jun	60.00	60.00	0.0	(27.7)	-	-	2.61	156.7	0.34%	0.79	1.50	75.9	2.5	93.30	0.85
LIVESTOCK FEED (O)	30-Jun	26.50	26.50	0.0	2.1	-	-	31.50	834.8	1.84%	3.73	1.20	7.1	4.5	45.56	8.19
LIVESTOCK FEED (P)	30-Jun	24.00	24.00	0.0	2.1	35	840	-	-	0.00%	-	1.20	-	5.0	-	-
LES MOULINS DE LA CONCORDE (O)	30-Jun	202.50	202.50	0.0	29.4	37	7,547	5.40	1,093.5	2.41%	12.20	8.00	16.6	4.0	274.34	4.45
LES MOULINS DE LA CONCORDE (P)	30-Jun	330.00	330.00	0.0	5.7	-	-	-	-	0.00%	-	20.00	-	6.1	-	-
MAURITIUS COSMETICS	31-Dec	51.00	51.00	0.0	(6.8)	-	-	5.00	255.0	0.56%	0.34	1.50	150.0	2.9	208.87	0.16
MARGARINE INDUSTRIES	31-Dec	923.00	923.00	0.0	0.0	-	-	0.30	277.1	0.61%	61.95	50.00	14.9	5.4	532.62	11.63
MAURITIUS SECONDARY INDUSTRIES	30-Jun	31.60	31.60	0.0	0.2	-	-	0.80	25.3	0.06%	3.95	1.00	8.0	3.2	68.88	5.73
PAPER CONVERTING	31-Dec	50.00	50.00	0.0	0.0	-	-	1.80	90.0	0.20%	3.12	1.50	16.0	3.0	156.80	1.99
QUALITY BEVERAGE	31-Dec	7.26	7.28	0.3	10.3	200	1,456	22.48	163.7	0.36%	0.86	0.30	-	-	12.15	-
SOAP & ALLIED INDUSTRIES	31-Dec	19.50	19.50	0.0	(2.5)	279	5,440	4.50	87.7	0.19%	0.50	-	39.0	-	58.72	0.85
Investments																
ASCENCIA Ltd (Class A Shares)	30-Sep	12.15	12.50	2.9	(2.3)	53,900	665,350	423.30	5,291.2	11.64%	1.26	0.27	9.9	2.2	12.03	10.47
Ascencia Ltd (Preference Shares)	30-Jun	13.60	13.60	0.0	-	-	-	-	-	0.00%	-	0.45	-	-	-	-
ENL LTD (P)	30-Jun	26.00	26.00	0.0	(3.7)	4,300	111,800	-	-	0.00%	2.51	0.78	10.4	3.0	76.69	-
EUDCOS	30-Jun	15.00	15.10	0.7	(3.2)	18,455	278,650	121.45	1,833.9	4.04%	1.81	0.80	8.3	5.3	13.38	13.53
THE BEE EQUITY PARTNERS	30-Jun	16.30	16.30	0.0	(85.2)	1,600	26,080	8.82	143.8	0.32%	0.84	2.00	19.4	12.3	58.50	26.12
PHOENIX INVESTMENT	30-Jun	270.75	270.75	0.0	15.2	2,103	569,387	5.69	1,539.3	3.39%	17.07	8.16	15.9	3.0	179.74	9.50
RHT HOLDING LTD	30-Jun	25.90	25.90	0.0	(5.8)	-	-	12.16	315.0	0.69%	3.13	1.05	8.3	4.1	48.91	-
UNITED INVESTMENT	30-Jun	11.00	11.00	0.0	(19.1)	14,600	160,600	151.46	1,666.1	3.67%	1.25	0.16	8.8	1.5	13.12	9.53
Leisure & Hotels																
CONSTANCE HOTELS SERVICES	31-Dec	31.80	31.80	0.0	(8.9)	100	3,180	109.65	3,487.0	7.67%	1.90	0.75	-	-	41.85	-
MORNING LIGHT	31-Dec	41.80	41.65	(0.4)	(0.4)	500	20,825	45.96	1,914.3	4.21%	-	-	-	-	21.37	-
SOUTHERN CROSS TOURIST HOTEL	31-Dec	5.00	5.00	0.0	(16.7)	-	-	125.64	628.2	1.38%	-	-	-	-	2.91	-
TROPICAL PARADISE (O)	30-Jun	5.60	5.60	0.0	(2.8)	-	-	142.50	798.0	1.76%	-	0.05	-	-	10.82	-
TROPICAL PARADISE (P)	30-Jun	275.00	275.00	0.0	59.0	-	-	-	-	0.00%	-	16.00	-	5.8	-	-
Mineral & Exploration																
SHUMBA COAL -(USD)	31-Dec	0.10	0.10	0.0	0.0	-	-	247.47	884.0	1.95%	-	-	-	-	0.05	-
Others																
COVIFRA	31-Oct	6.00	6.00	0.0	(8.8)	-	-	56.61	339.7	0.75%	-	-	-	-	37.21	-
CIEL TEXTILE LTD	30-Jun	40.75	41.50	1.8	5.1	109,504	4,487,585	101.81	4,225.0	9.30%	6.90	3.25	6.0	8.0	42.99	16.05
HOTELEST	31-Dec	30.10	30.20	0.3	(2.6)	100	3,020	55.92	1,688.9	3.72%	1.86	0.48	-	-	41.83	-
MEDICAL & SURGICAL CENTRE	31-Mar	2.60	2.60	0.0	13.0	-	-	569.94	1,481.8	3.26%	0.10	0.07	26.0	2.7	1.12	8.91
MFD Group Ltd	31-Dec	10.35	10.35	0.0	0.0	-	-	150.00	1,552.5	3.42%	0.23	0.13	-	-	7.89	2.92
SIT LAND HOLDINGS OPT	30-Jun	13,000.00	13,000.00	0.0	23.8	2	26,000	-	-	0.00%	-	-	-	-	1.67	-
Property Development																
ATTITUDE PROPERTY		10.00	10.00	0.0	-	27,000	270,000	160.02	1,600.17	-	-	-	-	-	-	-
NOVUS PROPERTIES	31-Mar	8.00	8.00	0.0	-	-	-	-	-	-	0.49	0.44	16.3	5.5	9.14	5.36
Sugar																
CONSTANCE LA GALETTE	31-Dec	105.00	105.00	0.0	5.0	-	-	4.80	504.0	0.01	1.86	4.50	-	4.3	99.25	-
MEDINE LTD	30-Jun	60.00	60.00	0.0	(1.6)	350,825	21,049,494	105.00	6,300.0	0.14	-	1.60	-	2.7	78.13	-
UNION SUGAR ESTATE	31-Dec	30.00	30.00	0.0	(21.1)	-	-	18.90	567.0	1.25%	-	-	-	-	93.23	-
Transport																
UNITED BUS SERVICE	30-Jun	37.35	37.35	0.0	15.6	-	-	4.97	185.6	0.41%	6.23	1.00	6.0	-	39.20	15.89
Total						585,940	27,834,654		45,445.5							

Code	Debentures	Nominal Value (Rs)	Price 02.09.2016	Price 09.09.2016	Volume Traded	Value Traded (Rs)	YTM on last traded price (%)	Accrued Interest	Issue Date	Maturity Date
ABC.B0118	ABC Motors Company - Notes	25,000.00	24,997.96	24,997.96	-	-	6.00	920.55	28-Jan-16	27-Jan-19
ASCE.B2025	ASCENCIA - BONDS	12.00	12.59	12.59	-	-	5.28	0.14	8-Dec-15	30-Jun-25
UTIN.B2020	United Investments Ltd - Bond	12.00	100.08	100.08	-	-	6.31	0.68	1-Feb-16	31-Jan-20