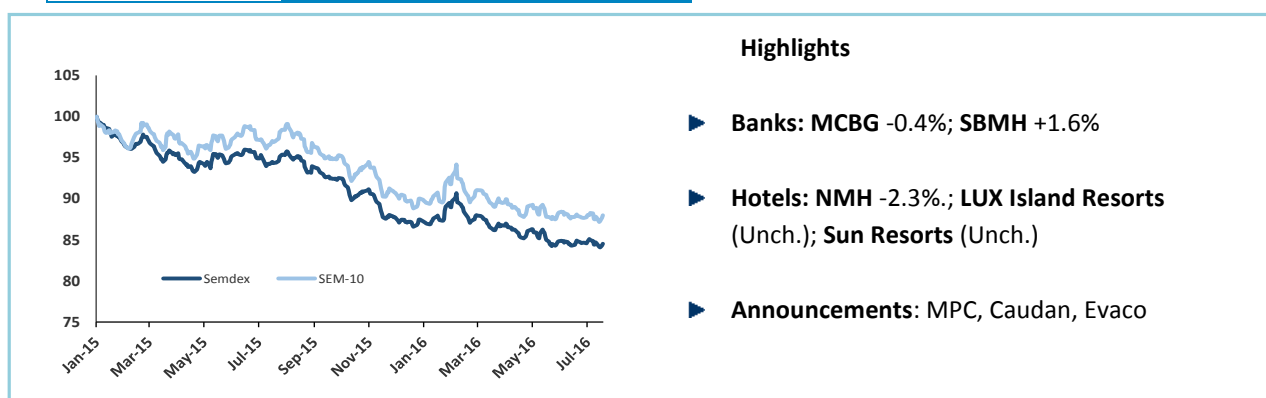


### Market Highlights

INDICES	LATEST	W-O-W % CHANGE	YTD % CHANGE
<b>LOCAL (Friday's closing)</b>			
SEMDEX	1,750.00	(0.08)	(3.4)
SEM-10	338.45	0.25	(2.3)
DEMEX	192.51	(0.78)	(3.4)
<b>REGIONAL (Thursday's closing)</b>			
FTSE/JSE (SOUTH AFRICA)	52,974.03	0.3	3.9
NGSE (NIGERIA)	27,997.29	(2.5)	4.6
EGX 30 (EGYPT)	7,503.36	(1.1)	7.5
NSEASI (KENYA)	138.62	(0.1)	(3.7)
BGSMDC (BOTSWANA)	9,977.21	(0.1)	(5.9)
GGSECI (GHANA)	1,781.21	(0.3)	(10.4)
<b>INTERNATIONAL (Thursday's closing)</b>			
DOW JONES	18,595.03	0.5	4.9
CAC 40	4,376.25	(0.2)	(6.9)
SENSEX	27,710.52	(0.5)	6.7
DAX	10,156.21	0.9	(6.5)
NIKKEI	16,810.22	2.6	(11.4)
FTSE 100	6,699.89	0.7	6.1

	%
GDP GROWTH (2016) by Statistics Mauritius	3.9
UNEMPLOYMENT RATE (2015)	7.9
CPI HEADLINE INFLATION	0.9
BUDGET DEFICIT (% of GDP) – Jul 2015/Jun 2016	3.6
REPO RATE	4.00
91 DAY T-BILLS	2.60
182 DAY T-BILLS	2.59
364 DAY T-BILLS	2.68
5-YEAR GOVT BONDS	4.23
20 -YEAR GOVT BONDS	6.89

FOREX	LATEST	W-O-W % CHANGE	YTD % CHANGE
MUR/US\$	35.76	0.2	-0.9
MUR/GBP	47.28	0.5	-11.6
MUR/INR	0.53	0.0	-1.9
MUR/JPY	33.55	0.3	12.6
MUR/ZAR	2.50	0.2	8.2
MUR/EURO	39.43	-0.8	-0.1



Research Desk

Email: [securities.research@swanforlife.com](mailto:securities.research@swanforlife.com)

Swan Securities Ltd

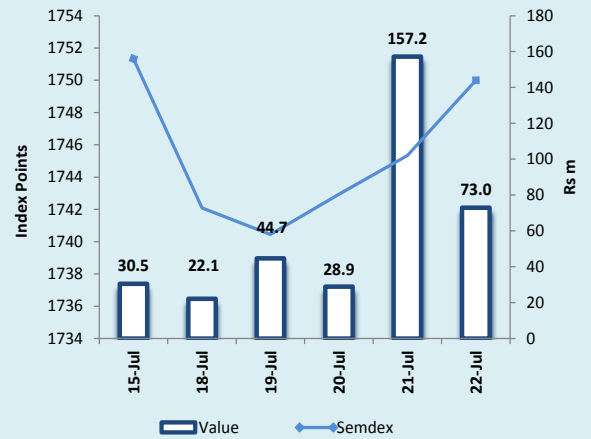
Swan Centre  
10 Intendance Street  
Port Louis, Mauritius

T (230) 208 7010  
F (230) 212 9867  
W swanforlife.com

BRN C06007932

This document may not be reproduced, copied, distributed for any purpose without the prior consent of Swan Securities Ltd. The information and opinions contained in this document have been completed or arrived at by Swan Securities Ltd from sources believed to be reliable and in good faith, but no representation or warranty express or implied is made as to their accuracy completeness or correctness. The information contained in this document is published for the assistance of recipients but is not to be relied upon as being authoritative or taken as substitution for the exercise of judgments by any recipient. Swan Securities Ltd accepts no liability whatsoever for any direct or consequential loss arising from any use of this document and its contents.

	Wk/ending 15.07.2016	Wk/ending 22.07.2016
<b>SECTORAL INDICES</b>		
BANKING INDEX	2,727.27	2,730.47
HOTEL INDEX	280.6	277.66
<b>FOREIGN TRANSACTIONS (Rsm)</b>		
TOTAL FOREIGN PURCHASES	51.70	17.89
TOTAL FOREIGN SALES	173.30	217.47
NET FOREIGN INFLOW/(OUTFLOW)	(121.60)	(199.59)
<b>MARKET CAPITALISATION (Rsbn)</b>		
OFFICIAL & DEM	253.74	253.37
<b>DIVIDEND YIELD (%)</b>		
OFFICIAL MARKET	4.22	4.23
<b>PER(x)</b>		
OFFICIAL MARKET	11.88	11.89



## News

**MPC** - During the Monetary Policy Committee (MPC) meeting held on 20 July 2016, the Key Repo Rate was reduced by 40 basis points to 4.0%. The MPC considered that downside risks to domestic growth outlook outweighed the risks to the inflation outlook.

**Caudan** - The Board of Directors of Caudan announced a bonus issue of 0.220226474 shares totaling 180,480,000 new ordinary shares. The main purpose of the Bonus Issue is to increase liquidity of Caudan shares on the SEM. The Company will then proceed with a rights issue of 1bn shares at an issue price of Rs 1.00 per share. The purpose of the Rights Issue is to enable the Group to raise funds to finance capital projects for the further development of Le Caudan Waterfront and to reduce the level of bank borrowings. Both the bonus and rights issue are subject to approval of shareholders.

**Evaco** (Following the adjustment of the Repo Rate) - as from the 21st of July 2016, the redeemable secured floating rate notes due 2021 of principal value MUR 1,000 each of Evaco Ltd, listed on the official market of the Stock Exchange of Mauritius Ltd will bear interest at a rate of 7.00% per annum (Bank of Mauritius Repo rate + 3.00 % per annum totalling 7.00% per annum).

## Official Market

**Indices** on the official market posted mixed results for this week with the **Semdex** slightly decreasing to 1750.00 points (-0.08%) and the **Sem-10** rising to 338.45 points (+0.25%). **Overall market turnover** stood at Rs325.8m, geared mostly towards the banking duo which accounted for 72.5% of weekly TMT. **Foreign investors** were again net sellers to the tune of Rs201.6m with MCBG showing the highest foreign sales.

**MCBG** closed the week marginally lower at Rs207.25 (-0.4%) on a total volume of 906.3k shares (VWAP: Rs207.04). The stock saw a net foreign outflow of Rs157.2m. Banking peer **SBMH** ended higher at Rs0.65 (+1.6%) with 75.7m shares exchanged (VWAP: Rs0.6401). Foreigners were net sellers on the stock, to the amount of Rs41.5m. **CFS** declined further by 0.6% to reach Rs6.56 on 267.1k shares.

On the commerce counter, **ENL Commercial** was the sole mover, edging down by 0.7% to Rs14.90 with merely 500 shares exchanged.

At the level of the industrials, **PIM** maintained its upward trend and secured its position as the best performer on the market by rising an extra 3.2% to Rs64.00 on 1.0k shares. Other movers on this counter were: **MOROIL** (-0.4%), **UBP** (-0.3%) and **PBL** (+0.1%). The investment counter saw 3 decliners: **Atlantic Leaf** (-5.2%), **PAD** (-3.9%) and **Ciel** (-1.6%). **Rogers** was the top gainer, increasing to Rs29.25 (+2.6%) on 194.0k shares. Other gainers included **MDIT** (+2.0%), **Fincorp** (+1.9%), **ENL Land (O)** (+1.5%), **Caudan** (+0.9%), **Terra** (+0.8%) and **NIT** (+0.1%).

Movers on the leisure and hotel segment had been only decliners. **NMH (P)** fell to Rs11.35 (-2.6%) and **NMH (O)** to Rs21.00 (-2.3%). **Lottotech** fell to Rs4.00 (-0.5%).

On the debt board, 200 **Evaco Notes** were exchanged at Rs1,060.18 and 5.0k of **MCBG Notes** were traded at Rs1,025.42.

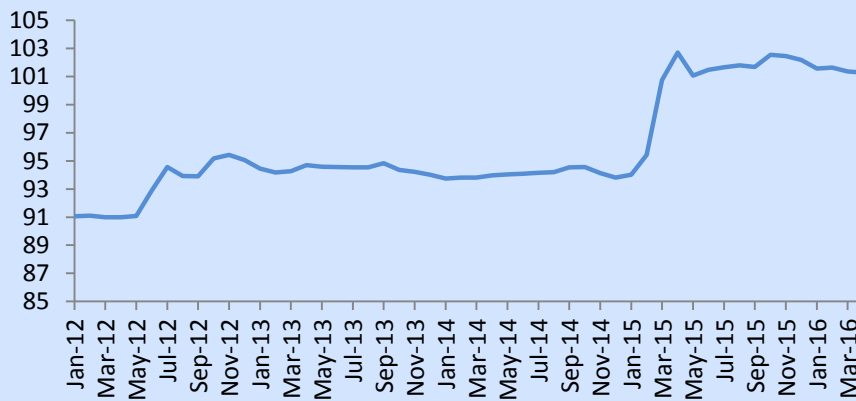
## DEM

On the DEM counter, the **Demex** declined by 0.78% to 192.51 points. Turnover on the counter stood at Rs24.2m, driven mostly towards **Attitude Property** and **Medine**, which altogether accounted for 66.0% of TMT. The former declined to Rs10.00 (-1.0%) on 927.5k shares exchanged and the latter inched lower to Rs55.00 (-1.8%) on 123.2k shares. Other losers on the counter were: **UTIN** (-9.6%), **Bee Equity** (-5.3%), **CHSL** (-3.0%), **SAIL** (-3.0%), **LFL (O)** (-2.8%) and **SIT Land Holdings Options** (-0.7%). The top performer on the counter was **Chemco** (+5.3%), followed by **Constance La Gaiete** (+5.0%), **Tropical Paradise (P)** (+4.9%), **Medical and Surgical** (+4.6%), **Ascencia (P)** (+3.0%), **LMLC (O)** (+2.2%), **EUDCOS** (+1.7%) and **ENL (P)** (+1.0%).

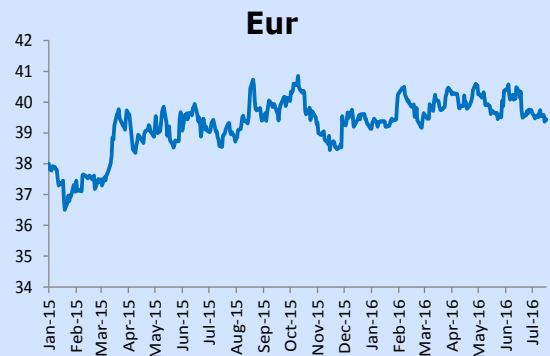
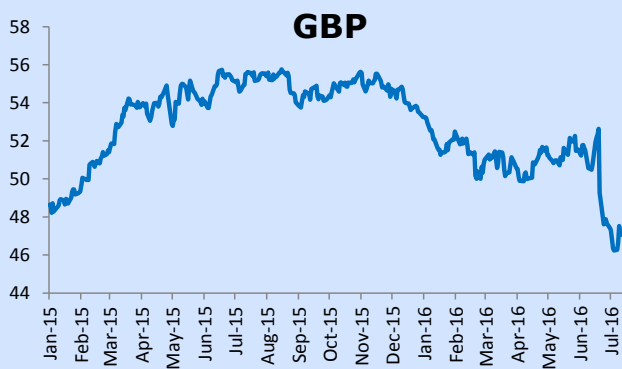
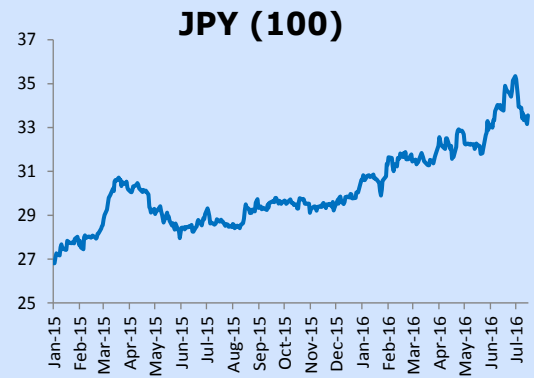
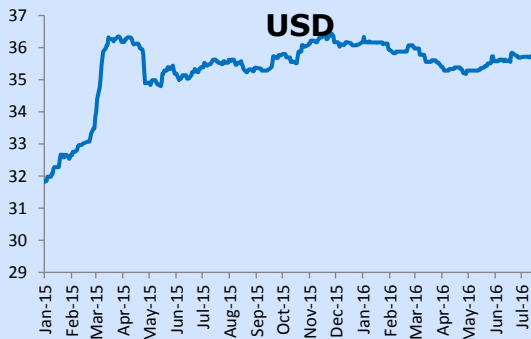
## Dividend Announcements

Company	Financial Year	Amount Rs	Last cum date	Payment date
<b>OFFICIAL MARKET</b>				
MDIT	30-Jun-16	0.13	13-Sep-16	28-Sep-16

## Mauritius Exchange Rate Index



## Forex



Sector/Stock	Year-end	Last Traded Price 15.07.2016	Last Traded Price 22.07.2016	Change for the week(%)	Change since 31.12.15 (%)	Volume traded	Value traded	Shares In issue(m)	Market Cap (Rm)	Weighted Market cap	EPS hist (Rs)	DPS hist (Rs)	PER hist (x)	Yield hist (%)	Latest NAV (Rs)	ROE (%)
<b>Banks, Insurance &amp; Other Finance</b>																
IRANIAN BANKING	31-Dec	Suspended	Suspended	0.0	0.0	-	-	901.29	3,875.6	1.9%	-	-	47.78	-	1.45	-
CIM FINANCIAL SERVICES	30-Sep	6.60	6.56	(0.6)	(17.6)	267,100	1,761,700	680.52	4,464.2	2.1%	0.84	0.31	7.8	4.73	4.82	17.43
MCB Group	30-Jun	208.00	207.25	(0.4)	(0.5)	906,300	187,637,378	238.19	49,364.3	23.6%	24.04	8.00	8.6	3.9	166.07	14.48
MEI	30-Jun	83.75	83.75	0.0	(6.9)	4,930	413,083	8.00	670.0	0.3%	0.82	1.10	102.1	1.3	85.13	0.96
NVA	31-Dec	63.00	63.00	0.0	0.0	3,835	241,605	45.09	2,840.7	1.4%	5.88	2.50	10.7	4.0	49.72	11.83
SBM HOLDINGS	31-Dec	0.64	0.65	1.6	(8.5)	75,711,551	48,460,050	30,374.02	19,743.1	9.4%	0.06	0.04	10.4	6.2	87.37	0.07
SWAN GENERAL	31-Dec	302.75	302.75	0.0	(27.9)	-	-	8.28	2,505.5	1.2%	11.21	12.00	9.7	4.0	280.93	11.07
<b>Commerce</b>																
CMPL	31-Dec	8.50	8.50	0.0	(45.0)	3,300	28,050	16.29	138.5	0.1%	-	-	-	-	4.47	-
ENL COMMERCIAL	30-Jun	15.00	14.90	(0.7)	(18.8)	500	7,450	29.17	434.7	0.2%	-	0.90	-	6.04	24.24	-
H MALLAC	31-Dec	81.00	81.00	0.0	(12.9)	-	-	11.26	912.0	0.4%	-	1.80	-	2.2	149.40	-
INDIOS	30-Jun	39.75	39.75	0.0	(6.5)	80,444	3,178,938	36.73	1,460.0	0.7%	3.18	1.85	12.5	4.7	47.25	6.73
IBL Ltd	30-Jun	27.85	27.25	-	(74.3)	793,775	21,605,568	680.22	18,536.1	8.9%	7.18	2.50	3.8	9.2	82.18	8.74
VIVO ENERGY	31-Dec	97.00	97.00	0.0	(3.0)	10	970	29.32	2,844.3	1.4%	9.64	4.80	10.1	4.9	25.73	37.47
<b>Industry</b>																
GAMMA CIVIC	31-Dec	22.70	22.70	0.0	(12.7)	16,057	364,494	133.25	3,024.8	1.4%	1.07	0.90	21.2	4.0	18.55	5.77
GO LIFE INTERNATIONAL PCC (USD)	28-Feb	0.03	0.03	0.0	0.0	-	-	900.00	965.1	0.5%	-	-	-	-	0.001	-
PBL	30-Jun	366.25	366.25	0.1	(4.4)	300	109,875	16.45	6,023.7	2.9%	19.52	9.60	18.8	2.6	210.44	9.28
MCFI	30-Jun	15.95	15.95	0.0	(17.4)	1,925	30,704	22.01	351.0	0.2%	0.11	0.70	145.0	4.4	33.06	0.33
MOROL	30-Jun	26.70	26.00	(0.4)	6.4	11,000	292,750	33.28	885.3	0.4%	1.43	1.30	18.6	4.9	11.64	12.29
PIM	30-Jun	64.00	64.00	3.2	(4.8)	1,000	64,000	2.00	128.0	0.1%	7.20	3.50	8.9	5.5	54.44	13.23
UBP	30-Jun	82.00	81.75	(0.3)	8.6	3,091	251,733	26.51	2,167.2	1.0%	2.56	3.00	31.9	3.7	106.70	2.40
<b>Investments</b>																
ATLANTIC LEAF PROPERTIES - (GBP)	28-Feb	1.16	1.10	(5.2)	(1.8)	200	10,388	-	-	-	0.09	0.07	12.6	6.4	-	-
ALTED LIMITED	30-Jun	26.90	26.90	2.3	(12.5)	1,122	30,181	318.49	8,567.4	4.1%	2.17	0.90	12.4	3.0	53.05	-
BMH	31-Dec	25.50	25.50	0.0	3.7	7,860	200,475	60.45	1,541.4	0.7%	0.80	0.80	31.9	3.1	43.22	1.85
CAUDAN	30-Jun	1.15	1.16	0.9	(4.1)	30,800	35,425	819.52	950.6	0.5%	0.00	-	892.3	-	3.56	-
CIEL LIMITED	30-Jun	6.20	6.10	(1.6)	(7.6)	2,284,924	13,936,377	9,614.7	1,576.18	4.6%	0.70	0.16	8.7	2.6	9.06	-
FINCORP	30-Jun	18.60	18.95	1.9	(1.7)	1,772	33,516	103.36	1,958.6	0.9%	0.65	0.60	3.2	6.65	37.10	-
MDIT	30-Jun	4.00	4.08	2.0	(12.3)	27,450	111,232	423.39	1,727.4	0.8%	0.26	0.32	15.7	7.8	3.56	-
NIT	30-Jun	33.65	33.60	0.1	(14.9)	420	14,104	13.70	460.4	0.2%	0.91	1.65	36.9	4.9	70.45	-
PAD	30-Jun	89.50	86.00	(3.9)	(5.5)	5,745	494,090	38.94	3,348.5	1.6%	1.56	2.50	55.1	2.9	192.83	-
POLICY	31-Dec	6.08	6.10	0.3	(6.2)	68,422	411,386	226.99	1,384.6	0.7%	0.20	0.35	30.5	5.7	5.21	3.84
ROCKCASTLE (USD)	31-Mar	2.26	2.26	0.0	2.7	-	-	-	-	-	0.09	0.05	25.7	2.0	1.62	-
ROGERS	30-Sep	28.50	29.25	2.6	6.4	194,010	5,654,371	252.05	7,372.3	3.5%	1.86	0.84	15.7	2.9	38.37	4.85
ENL LAND (D)	30-Jun	40.60	40.60	1.5	(11.7)	89,013	3,589,560	295.85	12,011.4	5.7%	2.21	1.32	18.4	3.3	86.32	2.56
ENL LAND (P)	30-Jun	40.00	40.00	0.0	1.9	429	17,160	0.00	429	0.0%	-	2.80	-	7.0	-	-
TERRA	31-Dec	30.00	30.25	0.8	6.1	253,072	7,655,432	227.55	6,883.3	3.3%	2.62	0.85	11.5	2.8	73.97	3.54
UNITED DOCKS	30-Jun	60.75	60.75	0.0	(19.0)	20	1,215	10.56	641.5	0.3%	5.14	-	11.8	-	186.50	-
<b>Hotels &amp; Resorts</b>																
ASL	31-Dec	60.00	60.00	0.0	71.4	100	6,000	3.54	212.1	0.1%	6.76	3.00	8.9	5.0	17.11	39.51
LOTTOTECH	31-Dec	4.02	4.00	(0.5)	13.6	12,100	48,072	340.00	1,360.0	0.7%	0.12	0.12	33.3	3.0	0.38	31.90
NMH	30-Sep	21.50	21.00	(2.3)	20.7	121,355	2,490,308	484.27	10,169.7	4.9%	0.35	0.33	60.0	1.6	28.95	-
NMH (P)	30-Jun	11.65	11.35	(2.6)	(1.3)	214,500	2,424,350	-	-	-	-	-	-	2.9	-	-
LUX ISLAND RESORTS	30-Jun	57.75	57.75	0.0	(2.9)	190,628	11,014,619	136.91	7,906.5	3.8%	2.94	1.15	19.6	2.0	46.00	-
SUN RESORTS	31-Dec	34.00	34.00	0.0	(0.3)	215,792	7,351,892	146.73	4,988.8	2.4%	3.89	-	8.7	-	53.62	-
<b>Property Development</b>																
BLUELIFE LIMITED	31-Dec	2.05	2.05	0.0	(44.4)	50,320	103,154	425.34	872.0	0.2%	-	-	-	-	6.70	-
<b>Sugar</b>																
OMNICANE	31-Dec	64.25	64.25	0.0	(8.2)	435	27,949	67.01	4,305.5	2.1%	3.45	2.50	18.6	3.9	130.18	2.65
<b>Transport</b>																
AIR MAURITIUS	31-Mar	12.50	12.50	0.0	13.6	30,520	371,420	102.31	1,278.8	0.6%	-	-	-	-	30.31	-
<b>Other</b>																
DALE CAPITAL GROUP LIMITED	28-Feb	2.80	2.80	0.0	0.0	-	-	-	111.5	0.1%	-	-	-	-	0.03	-
<b>Funds/GBL Companies</b>																
ASTORIA INVESTMENT - USD	31-Dec	1.00	1.00	0.0	0.0	-	-	-	-	0.0%	-	-	-	-	0.96	-
BAYPORT MANAGEMENT - (USD)	30-Jun	4.40	4.40	0.0	0.0	-	-	-	-	0.0%	-	-	-	-	6.01	-
CMB INTERNATIONAL - USD	30-Jun	0.10	0.10	0.0	0.0	-	-	-	-	0.0%	-	-	-	-	-	-
MARLA DELTA PROPERTY HOLDINGS - USD	30-Jun	1.73	1.74	0.6	(0.6)	100	6,224	-	-	0.0%	0.00	0.11	446.2	6.5	1.69	-
GREENBAY PROPERTIES - GBP	30-Jun	0.07	0.07	0.0	(12.5)	-	-	-	-	0.0%	-	-	-	-	-	-
MAINLAND REAL ESTATE	30-Jun	2.00	2.00	0.0	0.0	-	-	-	-	0.0%	-	-	-	-	-	-
NEW FRONTIER PROPERTIES - GBP	30-Jun	1.20	1.20	0.0	0.0	-	-	-	-	0.0%	0.01	0.03	92.3	2.5	0.78	-
SANLAM AFRICA CORE REAL ESTATE INVESTMENTS CLASS A - USD	31-Dec	4.50	4.50	0.0	(18.2)	-	-	-	-	0.0%	-	0.17	-	3.8	5.79	-
STONEBRIDGE PROPERTIES - USD	30-Jun	1.00	1.00	0.0	0.0	-	-	-	-	0.0%	-	-	-	-	-	-
TADVEST - USD	30-Jun	0.90	0.90	0.0	0.0	-	-	-	-	0.0%	-	-	-	-	-	-
TREVO CAPITAL PREFERENCE SHARES - ZAR	30-Jun	13.00	13.00	0.0	0.0	-	-	-	-	0.0%	-	-	-	-	-	-
<b>EXCHANGE TRADED FUNDS (ETF)</b>																
CORESHARES S&P GLOBAL PROPERTY ETF - USD	30-Jun	2.71	2.72	0.4	0.0	-	-	-	-	0.0%	-	-	-	-	-	-
CORESHARES S&P 500 ETF - USD	30-Jun	2.18	2.17	(0.5)	0.0	-	-	-	-	0.0%	-	-	-	-	-	-
MCB India Sovereign Bond (Fixed Income) - (USD)	30-Jun	10.11	10.15	0.4	0.0	-	-	-	-	0.0%	-	-	-	-	-	-
S&P GIVI SOUTH AFRICA TOP 50 INDEX ETF PORTFOLIO	30-Jun	117.12	118.44	1.1	(19.5)	-	-	-	-	0.0%	-	-	-	-	-	-
NEWGOLD	30-Jun	450.56	450.56	1.0	18.2	-	-	-	-	0.0%	-	-	-	-	-	-
NEWPLAT	30-Jun	381.80	373.73	(2.1)	(13.9)	-	-	-	-	0.0%	-	-	-	-	-	-
<b>Total</b>						<b>81,611,437</b>	<b>325,846,685</b>		<b>209,001</b>							

Code	Debitures	Nominal Value (Rs)	Price 15.07.2016	Price 22.07.2016	Volume Traded	Value Traded (Rs)	YTM on last traded price (%)	Accrued Interest (Rs)	Issue Date	Maturity Date
ASN.D0001	ABSA BANK - CREDIT LINKED NOTES 1 - USD	100,000.00	99,513.92	99,513.92	-	-	3.99	712.07	11-Jun-15	1-Sep-17
ASN.D0002	ABSA BANK - CREDIT LINKED NOTES 2 - USD	100,000.00	100,000.00	100,000.00	-	-	4.78	327.66	23-Jun-15	8-Oct-19
CBVL.D0105	Compagnie de Beau Vallon Limitee - Class A Bonds	1,000.00	1,009.36	1,009.36	-	-	5.25	13.64	27-Oct-15	27-Oct-20
CBVL.D0205	Compagnie de Beau Vallon Limitee - Class B Bonds	1,000.00	1,015.50	1,015.50	-	-	5.59	14.88	27-Oct-15	27-Oct-20
EVAC.D2105	Evaco Ltd - Floating Rate Notes - INTRO - 01.07.16	1,000.00	1,060.36	1,060.18	200	212,036	5.97	8.24	17-Jun-16	16-Jun-21
MCBG.D2023	MCB GROUP - NOTES	1,000.00	1,025.47	1,025.42	5,010	5,137,406	5.31	12.53	8-Aug-13	8-Aug-23
MUA.D2124	MAURITIUS UNION ASSURANCE - NOTES	10,000.00	10,509.02	10,509.02	-	-	5.47	213.27	24-Sep-14	24-Sep-24
NRL.D0701	LUX - F/P CONVERTIBLE BONDS	10.00	11.10	11.						

Sector/Stock	Year-end	Last Traded Price 15.07.2016	Last Traded Price 22.07.2016	Change for the week(%)	Change since 31.12.15 (%)	Volume traded	Value traded	Shares in issue(m)	Market Cap (Rsm)	Weighted Market cap	EPS hist (Rs)	DPS hist (Rs)	PER hist (x)	Yield hist (%)	Latest NAV (Rs)	ROE (%)
<b>Banks, Insurance &amp; Other Finance</b>																
ABC BANKING CORPORATION	30-Jun	18.00	18.00	0.0	0.0	100	1,800	76.27	1,372.9	3.10%	1.6	0.17	11.3	0.9	11.27	14.20
SWAN LIFE	31-Dec	1,045.00	1,045.00	0.0	4.5	-	-	2.63	2,750.7	6.20%	62.91	46.00	16.6	4.4	-	-
<b>Commerce</b>																
ABC MOTORS	30-Jun	85.50	85.50	0.0	0.6	1,900	162,450	6.18	528.0	1.19%	10.32	1.50	8.3	1.8	96.32	10.71
ASSOCIATED COMMERCIAL	30-Jun	153.00	153.00	0.0	0.0	-	-	1.14	174.9	0.39%	27.15	4.00	5.6	2.6	263.15	10.32
CHEMCO	31-Dec	16.10	16.95	5.3	(10.8)	2,059	34,850	6.21	105.2	0.24%	0.66	1.10	25.7	6.8	16.05	4.11
CIE IMMOBILIERE	31-Dec	444.25	444.25	0.0	5.0	-	-	0.27	118.3	0.27%	31.63	20.00	14.0	4.5	1,083.73	2.92
<b>Information Communication &amp; Technology</b>																
BHARAT TELECOM	31-Mar	6.36	6.36	0.0	(25.2)	-	-	19.14	121.7	0.27%	-	-	-	-	5.99	-
<b>Industry</b>																
BYCHEMEX	31-Dec	4.18	4.18	0.0	(38.0)	-	-	5.00	20.9	0.05%	0.01	0.10	418.0	2.4	5.81	0.17
FORGES TARDIEU	31-Dec	148.00	148.00	0.0	5.9	100	14,800	1.92	284.2	0.64%	26.66	-	-	-	209.87	-
LES GAZ INDUSTRIELS	30-Jun	70.00	70.00	0.0	(15.7)	-	-	2.61	182.8	0.41%	0.79	1.50	88.6	2.1	93.30	0.85
LIVESTOCK FEED (O)	30-Jun	26.50	25.75	(2.8)	(0.8)	974	25,025	31.50	811.1	1.83%	3.73	1.20	6.9	4.5	45.56	8.19
LIVESTOCK FEED (P)	30-Jun	24.00	24.00	0.0	2.1	67	1,608	-	-	0.00%	-	1.20	-	5.0	-	-
LES MOULINS DE LA CONCORDE (O)	30-Jun	200.50	205.00	2.2	31.0	1,052	212,949	5.40	1,107.0	2.50%	12.20	8.00	16.8	4.0	274.34	4.45
LES MOULINS DE LA CONCORDE (P)	30-Jun	330.00	330.00	0.0	5.7	14	4,620	-	-	0.00%	-	20.00	-	6.1	-	-
MAURITIUS COSMETICS	31-Dec	55.00	55.00	0.0	0.5	64	3,595	5.00	275.0	0.62%	0.34	1.50	161.8	2.7	208.79	0.16
MARGARINE INDUSTRIES	31-Dec	923.00	923.00	0.0	0.0	-	-	0.30	277.1	0.62%	61.95	50.00	14.9	5.4	526.54	11.77
MAURITIUS SECONDARY INDUSTRIES	30-Jun	31.60	31.60	0.0	0.2	-	-	0.80	25.3	0.06%	3.95	1.00	8.0	3.2	68.88	5.73
PAPER CONVERTING	31-Dec	50.00	50.00	0.0	0.0	-	-	1.80	90.0	0.20%	3.12	1.50	16.0	3.0	156.43	1.99
QUALITY BEVERAGE	31-Dec	7.50	7.50	0.0	13.6	2,720	20,400	22.48	168.6	0.38%	0.86	0.30	-	-	12.33	-
SOAP & ALLIED INDUSTRIES	31-Dec	20.10	19.50	(3.0)	(2.5)	100	1,950	4.50	87.7	0.20%	0.50	-	39.0	-	54.67	0.91
<b>Investments</b>																
ASCENCIA Ltd (Class A Shares )	30-Sep	12.30	12.30	0.0	(3.9)	113,956	1,401,667	423.30	5,206.6	11.74%	1.30	0.31	9.5	2.5	12.03	10.81
Ascencia Ltd (Preference Shares )	30-Jun	13.20	13.60	3.0	-	1,100	14,920	-	-	0.00%	-	-	-	-	-	-
ENL LTD (P)	30-Jun	24.00	24.25	1.0	(10.2)	19,400	459,225	-	-	0.00%	2.51	0.78	9.7	3.3	76.69	-
EUDCOS	30-Jun	14.50	14.75	1.7	(5.4)	32,052	465,379	121.45	1,791.4	4.04%	1.81	0.80	8.1	5.5	13.38	13.53
THE BEE EQUITY PARTNERS	30-Jun	14.25	13.50	(5.3)	(87.7)	9,929	137,738	8.82	119.1	0.27%	0.84	2.00	16.1	14.0	58.50	26.12
PHOENIX INVESTMENT	30-Jun	220.00	217.50	(1.1)	(7.4)	2,100	458,150	5.69	1,236.6	2.79%	17.07	8.16	12.7	3.7	179.74	9.50
RHT HOLDING LTD	30-Jun	26.50	26.50	0.0	(3.6)	-	-	12.16	322.3	0.73%	3.13	0.85	8.5	3.2	48.91	-
UNITED INVESTMENT	30-Jun	12.45	11.25	(9.6)	(17.3)	12,500	143,800	151.46	1,703.9	3.84%	1.25	0.16	9.0	1.3	13.12	9.53
<b>Leisure &amp; Hotels</b>																
CONSTANCE HOTELS SERVICES	31-Dec	32.80	31.80	(3.0)	(8.9)	1,500	47,700	109.65	3,487.0	7.86%	1.90	0.75	-	-	43.34	-
MORNING LIGHT	31-Dec	41.80	41.80	0.0	0.0	-	-	45.96	1,921.2	4.33%	-	-	-	-	22.10	-
SOUTHERN CROSS TOURIST HOTEL	31-Dec	5.00	5.00	0.0	(16.7)	21,000	105,000	125.64	628.2	1.42%	-	-	-	-	3.02	-
TROPICAL PARADISE (O)	30-Jun	5.60	5.60	0.0	(2.8)	24,000	134,400	142.50	798.0	1.80%	-	0.05	-	-	10.82	-
TROPICAL PARADISE (P)	30-Jun	203.00	213.00	4.9	23.1	800	170,400	-	-	0.00%	-	16.00	-	7.9	-	-
<b>Mineral &amp; Exploration</b>																
SHUMBA COAL -(USD)	31-Dec	0.10	0.10	0.0	0.0	-	-	247.47	884.0	1.99%	-	-	-	-	0.05	-
<b>Others</b>																
COVIFRA	31-Oct	6.00	6.00	0.0	(8.8)	-	-	56.61	339.7	0.77%	-	-	-	-	37.21	-
CIEL TEXTILE LTD	30-Jun	40.00	40.00	0.0	1.3	41,767	1,663,082	101.81	4,072.3	9.18%	6.90	2.50	5.8	6.3	42.99	16.05
HOTELEST	31-Dec	32.00	32.00	0.0	3.2	-	-	55.92	1,789.5	4.04%	1.86	0.48	-	-	43.33	-
MEDICAL & SURGICAL CENTRE	31-Mar	2.37	2.48	4.6	7.8	6,900	17,112	569.94	1,413.5	3.19%	0.10	0.04	24.8	1.7	1.12	8.91
MFD Group Ltd	31-Dec	10.25	10.00	0.0	0.0	1,000	10,000	150.00	1,500.0	3.38%	0.23	0.13	-	-	7.70	2.99
SIT LAND HOLDINGS OPT	30-Jun	13,800.00	13,700.00	(0.7)	30.5	2	27,400	-	-	0.00%	-	-	-	-	1.67	-
<b>Property Development</b>																
ATTITUDE PROPERTY		10.10	10.00	(1.0)	-	927,500	9,275,000	160.02	1,600.17	-	-	-	-	-	-	-
NOVUS PROPERTIES	31-Mar	8.00	8.00	0.0	-	-	-	-	-	-	0.49	0.44	16.3	5.5	9.14	5.36
<b>Sugar</b>																
CONSTANCE LA GAIEE	31-Dec	100.00	105.00	5.0	5.0	100	10,500	4.80	504.0	0.01	1.86	4.50	-	4.5	101.95	-
MEDINE LTD	30-Jun	56.00	55.00	(1.8)	(9.8)	123,205	6,706,395	105.00	5,775.0	0.13	-	1.20	-	2.1	78.13	-
UNION SUGAR ESTATE	31-Dec	30.00	30.00	0.0	(21.1)	-	-	18.90	567.0	1.28%	-	-	-	-	93.84	-
<b>Transport</b>																
UNITED BUS SERVICE	30-Jun	37.35	37.35	0.0	15.6	-	-	4.97	185.6	0.42%	6.23	-	6.0	-	39.20	15.89
<b>Total</b>						<b>1,372,961</b>	<b>24,232,414</b>		<b>44,346.5</b>							

Code	Debentures	Nominal Value (Rs)	Price 15.07.2016	Price 22.07.2016	Volume Traded	Value Traded (Rs)	YTM on last traded price (%)	Accrued Interest	Issue Date	Maturity Date
ABC.B0118	ABC Motors Company - Notes	25,000.00	24,997.96	24,997.96	-	-	6.00	743.84	28-Jan-16	27-Jan-19
ASCE.B2025	ASCENCIA - BONDS	12.00	12.03	12.03	-	-	5.97	0.05	8-Dec-15	30-Jun-25
UTIN.B2020	United Investments Ltd - Bond	12.00	100.00	100.02	25,000	2,500,500	6.34	3.28	1-Feb-16	31-Jan-20