

MARKET HIGHLIGHTS

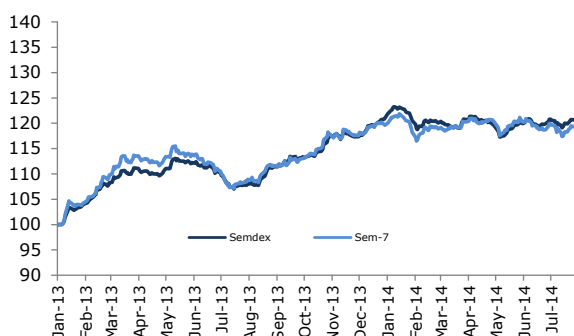
01 Aug 2014

INDICES	LATEST	W-O-W % CHANGE	YTD % CHANGE
LOCAL (Friday's closing)			
SEMDEX	2,097.86	0.3	0.1
SEM-7	404.54	0.4	0.2
DEMEX	189.74	0.2	9.2
REGIONAL (Thursday's closing)			
FTSE/JSE (SOUTH AFRICA)	51,770.59	0.3	11.9
NGSE (NIGERIA)	42,369.02	(0.4)	2.5
EGX 30 (EGYPT)	8,735.24	2.0	28.8
NSEASI (KENYA)	151.57	0.5	10.9
BGSMDC (BOTSWANA)	9,256.25	0.5	2.2
GGSECI (GHANA)	2,299.91	(0.5)	7.2
INTERNATIONAL (Thursday's closing)			
DOW JONES	16,880.36	(1.2)	1.8
CAC 40	4,312.30	(2.2)	0.4
SENSEX	25,894.97	(1.4)	22.3
DAX	9,593.68	(2.0)	0.4
NIKKEI	15,620.77	2.2	(4.1)
FTSE 100	6,773.44	(0.7)	0.4

	%
GDP growth (2014F) by CSO	3.5
UNEMPLOYMENT RATE	8.0
CPI HEADLINE INFLATION	4.0
BUDGET DEFICIT (% of GDP) - 2013	3.7
REPO RATE	4.65
BANK RATE	2.48
91 DAY T-BILLS	N/A
182 DAY T-BILLS	1.8
273 DAY T-BILLS	N/A
364 DAY T-BILLS	N/A
5-YEAR GOVT BONDS	5.32
10-YEAR GOVT BONDS	6.91

FOREX	LATEST	W-O-W % CHANGE	YTD % CHANGE
MUR/US\$	30.45	-0.2	-0.8
MUR/GBP	51.37	0.6	-3.2
MUR/INR	0.49	1.5	-0.8
MUR/JPY	29.37	1.0	-2.3
MUR/ZAR	2.82	1.4	3.4
MUR/EURO	40.76	0.5	2.2

Rebased Indices Evolution

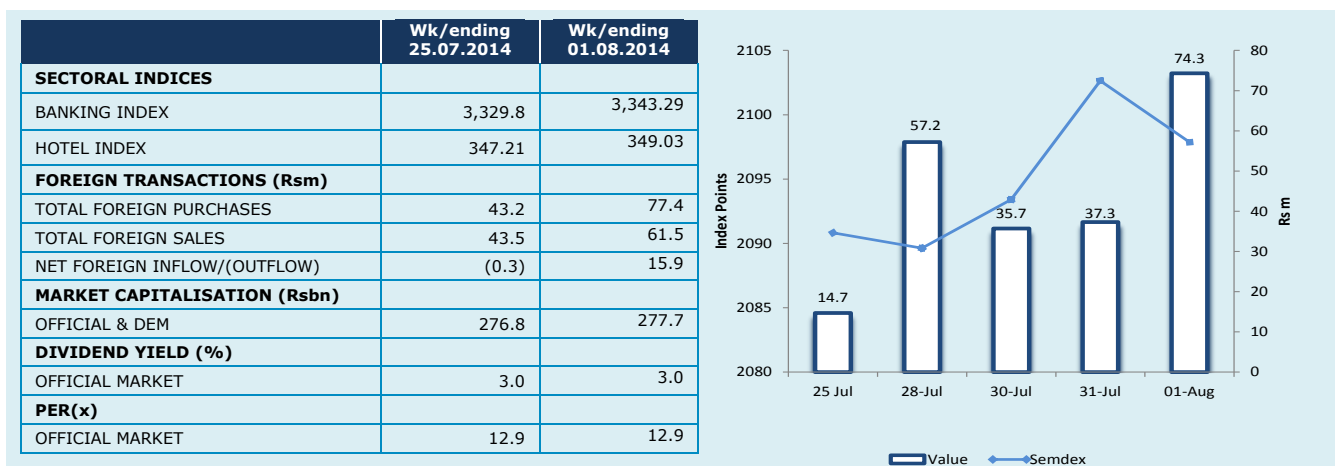


Highlights

- **Banks:** MCBG +0.8%; SBM unch.; Bramer unch.
- **Hotels:** NMH +0.6%; Lux Island +1.1%; Sun Resorts +0.2%
- **Le Meritt Holdings** - Placed under administration.
- **PAD** - Granted waiver from making a mandatory takeover on Medine Limited & SODIA.
- **ENL Limited** - Successful issue of Rs1.15bn in Secured Notes

Anglo-Mauritius Stockbrokers (Research)

research@anglo.mu



News

Le Meritt Holdings: Notice was issued by BDO & Co Chartered Accountants (BDO) on 25 July 2014, under section 234(3) of the Insolvency Act 2009, where BDO announced that the Le Meritt Holdings has been placed under administration.

PAD: On 25 July 2014, the FSC has granted to PAD a waiver from making a mandatory takeover on both Medine Limited and Sodja, two listed entities on the Dem market on the SEM, upon the implementation of Medine Group's restructuring.

Go Life International PCC: A secondary listing is being contemplated on the Alternative Exchange of the Johannesburg Stock Exchange. Furthermore, specific details about the transaction with the German AG will be communicated in August 2014.

ENL Limited: Issued Secured Notes of term 6 years, of MUR 1.15bn through a private placement with institutional investors. The proceeds from the Notes will be used to refinance existing bank debts and to support the group's development plans.

Official Market

Total market turnover (TMT) amounted to Rs204.4m (USD 6.7m), whereby **63% of TMT were occupied by largest hotelier listed, NMH and the banking trio MCBG, SBM and Bramer**. As for the **indices**, yet again they ended the week on the upside with the **Semdex** and **SEM-7** gaining 0.3% and 0.4% to reach 2,097.86 points and 404.54 points respectively. **Foreign investors** were net buyers to the amount of Rs15.9m.

MCBG pursued its ascension this week as well where it even reached a high on Rs215.00 yesterday but fell to close at Rs214.75 (+0.8%) today, with a total volume of 129.8k shares traded (VWAP Rs214.18). **State Bank** closed unchanged at Rs1.07, at which price level most of the significant volume of 33.5m shares were exchanged. **Bramer Banking** was the highlight of Monday's trading session where it witnessed a foreign cross of 3.0m shares exchanged at Rs6.96. Financial company CFS let off some steam during the week but recouped to close the week unchanged at Rs8.60, with 430.6k shares traded overall (VWAP Rs8.55). On the **insurance side**, **MUA** remained unchanged at Rs136.00 on 10.7k shares, whilst **Swan** fell further by 0.3% to Rs298.00, with thin volume of 2.1k shares exchanged.

On the **commerce counter**, movers were **ENL Commercial** which went up to Rs21.20 (+1.0%), **Innodis** which gained 0.9% to Rs57.00 on 12.0k shares and **Vivo Energy** which climbed up to Rs136.00 (+0.7%) with 68.5k shares traded.

Gamma Civic finished the week unchanged at Rs48.50 with notable volume of 61.3k shares. **PBL** shed off 0.1% to reach Rs199.75 with 7.5k shares exchanged. **Moroil** fell to Rs27.20 (-1.3%).

Alteo dropped to Rs34.50 (-0.3%) with 44.1k shares traded overall. **ENL Land (O)** which closed unchanged at Rs49.00 witnessed notable volume of 62.6k shares exchanged over the week. **Terra** remained level at Rs37.00 on 246.5k shares traded. **Ciel** gained 1.5% to reach Rs6.96, with significant volume of 647.5k shares exchanged. **PAD** shot up to Rs94.00 on Thursday but concluded at Rs93.75 (+4.2%) today. **Rogers** gained 0.9% to Rs200.00 with 18.7k shares traded. The other investment stocks which were actively traded this week were **Caudan** (+0.8%), **MDIT** (-0.3%) and **POLICY** (-0.8%).

Lottotech finished unchanged at Rs11.70 on total volume of 215.3k shares exchanged. **NMH** which was the most traded stock by value on the Official market went up to close at Rs87.50 (+0.6%). The hotel group witnessed several crosses this week, whereby 507.8k shares were traded overall. **LUX** edged up to Rs47.50 (+1.1%) on 151.2k shares exchanged. **SUN** catapulted to Rs46.00 on Thursday on merely 200 shares to tumble down to Rs41.10 (+0.2%) today, with 50k shares traded. The sugar group, **Omnican** remained level at Rs88.00, with 54.2k shares traded.

DEM Market

The **Demex** gained 0.2% to reach 189.74 points on a weekly turnover of Rs15.9m, which was predominantly geared towards **ENL (P)** and **CIEL Textile**, accounting for 66% of TMT. **ENL (P)** saw significant crosses of 126k and 50k shares respectively traded at Rs24.75 yesterday. However, following the announcement of issued notes, the stock went up to close at Rs25.20 (+0.8%) today. **CIEL Textile** which witnessed several crosses over the week went up to Rs33.75 (+2.3%), with 151.2k shares traded. The main movers on the counter were **Bychemex** (+5.3%), **EUDCOS** (+3.3%), **SIT Options** (-6.7%), **Medical and Surgical** (-2.9%) and **Union Sugar Estate** (-3.5%).

Dividend

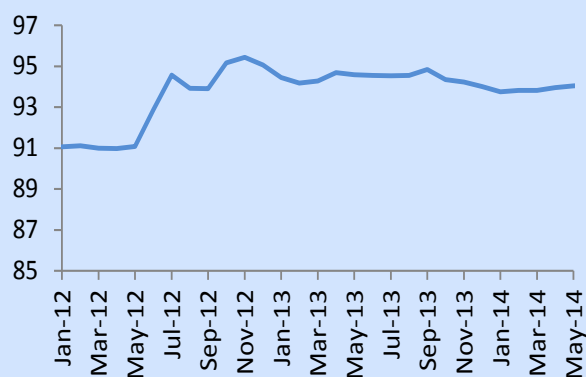
Company	Financial Year	Amount Rs	Last cum date	Payment date
OFFICIAL				
MDIT	30-Jun-2014	0.18	04-Sep-2014	22-Sep-2014
State Bank	31-Dec-2014	0.013	08-Sept-2014	25-Sept-2014*
DEM				
Margarine Industries	31-Dec-2014	20.00	25-Jul-2014	8-Aug-2014

*Subject to regulatory approval

World Equity – MSCI



Mauritius Exchange Rate

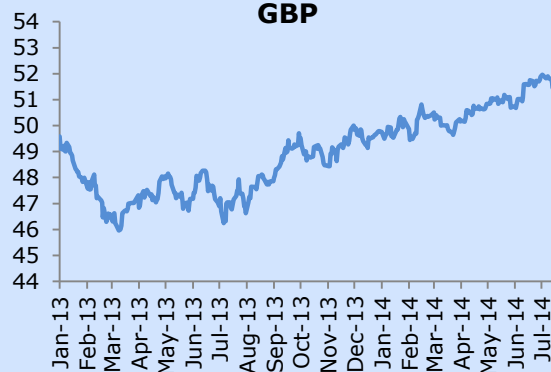


Forex

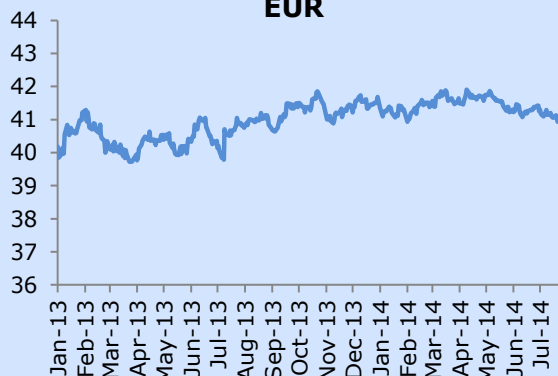
USD



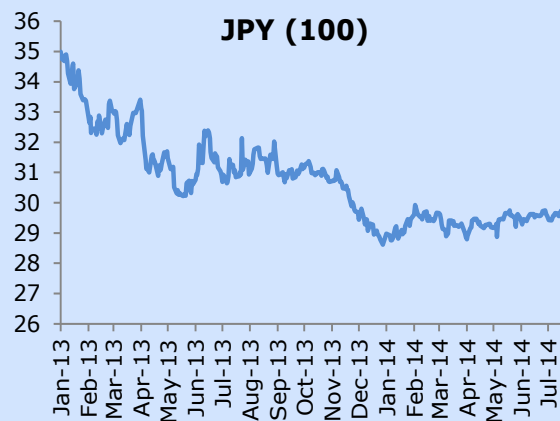
GBP



EUR



JPY (100)



Sector/Stock	Year-end	Price 25.07.2014	Price 01.08.2014	Change for the week(%)	Change since 31.12.13 (%)	Volume traded	Value traded	Shares in issue(m)	Market Cap (Rsm)	Weighted Market cap	EPS hist (Rs)	DPS hist (Rs)	PER hist (x)	Yield hist (%)	Latest NAV (Rs)	ROE (%)	Price/NAV Ratio
Banks, Insurance & Other Finance																	
BRAMER BANKING	31-Dec	6.96	6.96	0.0	(12.8)	3,013,894	20,976,702	901.29	6,273.0	2.72%	0.10	0.02	69.60	0.3	1.42	-	4.90
CIM FINANCIAL SERVICES	30-Sep	8.60	8.60	0.0	5.7	430,600	3,683,476	680.52	5,852.5	2.54%	0.73	0.22	11.8	2.56	3.88	18.81	2.22
MCB Group	30-Jun	213.00	214.75	0.8	2.3	129,807	27,802,001	237.98	51,105.6	22.19%	18.15	6.10	11.8	2.84	131.54	13.80	1.63
MEI	30-Jun	109.00	109.00	0.0	3.8	-	-	8.00	872.0	0.38%	14.56	3.50	7.5	3.2	99.61	14.62	1.09
MUA	31-Dec	136.00	136.00	0.0	10.6	10,700	1,455,200	20.04	2,725.4	1.18%	12.95	5.00	10.5	3.7	88.14	14.69	1.54
SBM	31-Dec	1.07	1.07	0.0	2.9	33,474,200	35,803,541	30,374.02	32,500.2	14.11%	0.12	0.06	9.0	5.6	0.76	15.61	1.41
SWAN	31-Dec	299.00	298.00	(0.3)	(5.4)	2,115	630,217	8.28	2,466.0	1.07%	27.13	10.90	11.0	3.7	207.28	13.09	1.44
Commerce																	
CMPL	31-Dec	25.50	25.50	0.0	(5.6)	-	-	2.19	55.9	0.02%	0.15	0.50	170.0	2.0	51.44	-	0.50
ENL COMMERCIAL	30-Jun	21.00	21.20	1.0	(5.8)	5,500	116,600	29.17	618.5	0.27%	-	1.60	-	7.5	24.62	-	0.86
H MALLAC	31-Dec	120.25	120.25	0.0	11.3	11,000	1,320,100	11.26	1,353.9	0.59%	-	3.00	2.5	145.48	-	0.83	
INNODIS	30-Jun	56.50	57.00	0.9	9.6	12,007	679,347	36.73	2,093.6	0.91%	4.43	1.80	12.9	3.2	52.17	8.49	1.09
IBL	30-Jun	105.00	105.00	0.0	2.9	3,152	329,410	71.44	7,501.0	3.26%	7.92	2.50	13.3	2.4	67.52	11.73	1.56
VIVO ENERGY	31-Dec	135.00	136.00	0.7	(10.5)	68,473	9,379,990	29.32	3,987.8	1.73%	7.59	1.00	17.9	0.7	19.66	38.60	-
Industry																	
GAMMA CIVIC	31-Dec	48.50	48.50	0.0	38.6	61,300	2,973,050	133.25	6,462.6	2.81%	0.78	0.90	62.0	1.9	18.23	4.29	2.66
GO LIFE INTERNATIONAL PCC	28-Feb	0.04	0.04	0.0	0.0	-	-	96.65	146.6	0.06%	0.00	-	10.0	-	0.05	-	-
PBL	30-Jun	200.00	199.75	(0.1)	4.6	7,526	1,501,722	16.45	3,285.3	1.43%	5.83	8.00	34.3	4.0	193.66	3.01	1.03
MCFI	30-Jun	26.00	26.00	0.0	8.3	-	-	22.01	572.2	0.25%	0.55	1.00	47.3	3.8	34.24	1.61	0.76
MOROIL	30-Jun	27.55	27.20	(1.3)	(2.9)	19,480	533,351	33.28	905.2	0.39%	1.40	1.40	19.4	5.1	11.78	11.88	2.31
PIM	30-Jun	76.00	76.00	0.0	(1.3)	-	-	2.00	152.0	0.07%	4.74	3.25	16.0	4.3	55.36	8.56	1.37
UBP	30-Jun	83.00	83.00	0.0	(12.6)	10,648	883,736	26.51	2,200.3	0.96%	6.06	3.00	13.7	3.6	114.43	5.30	0.73
Investments																	
ALTANTIC LEAF PROPERTIES - (GBP)	28-Feb	1.00	1.00	0.0	-	-	-	-	-	-	-	-	-	-	-	-	-
ALTEO LIMITED	30-Jun	34.60	34.50	(0.3)	(6.8)	44,143	1,524,684	318.49	10,988.0	4.77%	2.61	0.75	-	-	49.83	-	0.69
BMH	31-Dec	255.00	255.00	0.0	8.5	4	1,040	4.27	1,088.0	0.47%	10.36	8.00	24.6	3.1	437.00	2.37	0.58
CAUDAN	30-Jun	1.19	1.20	0.8	6.2	1,223,200	1,455,720	819.52	983.4	0.43%	0.05	0.04	24.0	3.3	3.54	-	0.34
CIEL LIMITED	30-Jun	6.86	6.96	1.5	-	647,524	4,494,096	1,576.18	10,970.2	4.76%	0.37	0.14	18.7	2.01	8.75	-	0.80
FINCORP	30-Jun	19.30	19.30	0.0	4.3	4,230	81,630	103.36	1,994.8	0.87%	0.27	0.30	71.5	1.6	36.07	-	0.54
MDIT	30-Jun	5.98	5.96	(0.3)	(0.7)	425,810	2,540,712	423.39	2,523.4	1.10%	0.84	0.31	-	5.2	4.12	-	1.45
NIT	30-Jun	50.00	50.00	0.0	17.1	-	-	13.70	685.1	0.30%	0.46	0.60	-	1.2	70.13	-	0.71
PAD	30-Jun	90.00	93.75	4.2	13.0	5,743	531,517	38.91	3,647.8	1.58%	-	1.50	-	1.6	192.61	-	0.49
POLICY	31-Dec	7.70	7.64	(0.8)	1.9	405,400	3,097,844	226.99	1,734.2	0.75%	0.52	0.40	14.7	5.2	5.81	8.95	1.31
ROCKCASTLE	31-Mar	1.50	1.50	0.0	15.4	-	-	-	-	-	-	0.01	-	-	1.21	-	1.24
ROGERS	30-Sep	198.25	200.00	0.9	0.5	18,680	3,728,035	25.20	5,040.9	2.19%	69.46	6.00	2.9	3.0	353.12	19.67	0.57
ENL LAND (O)	30-Jun	49.00	49.00	0.0	(3.0)	62,550	3,065,060	230.50	11,294.5	4.90%	5.90	1.22	8.3	2.5	68.27	8.64	0.72
ENL LAND (P)	-	42.50	42.50	0.0	(5.6)	-	-	-	-	-	-	2.80	-	6.6	-	-	-
TERRA	31-Dec	37.00	36.50	(1.4)	(6.4)	330,700	12,148,650	227.55	8,305.6	3.61%	1.60	0.80	22.8	2.2	72.01	2.22	0.51
UNITED DOCKS	30-Jun	67.25	67.00	(0.4)	(7.6)	7,331	491,326	10.56	707.5	0.31%	-	-	-	-	176.60	-	0.38
Leisure & Hotels																	
ASL	31-Dec	112.00	112.00	0.0	(2.6)	2	224	3.54	395.9	0.17%	11.60	10.00	9.7	8.9	9.45	122.77	11.85
LOTTOTECH	31-Dec	11.70	11.70	0.0	-	215,254	2,523,859	340.00	3,978.0	1.73%	0.67	0.49	17.6	4.2	0.29	231.03	40.34
NMH	30-Sep	87.00	87.50	0.6	(1.1)	507,736	44,208,096	161.42	14,124.6	6.13%	2.29	1.00	38.2	-	86.25	-	1.01
LUX ISLAND RESORTS	30-Jun	47.00	47.50	1.1	20.9	151,200	7,113,425	114.03	5,416.6	2.35%	0.91	-	52.2	-	34.29	-	1.39
SUN RESORTS	31-Dec	41.00	41.10	0.2	(1.2)	49,981	2,052,381	113.40	4,660.6	2.02%	-	-	-	-	47.74	-	0.86
Property Development																	
BlueLife Holdings	31-Dec	7.06	7.02	(0.6)	-	65,635	461,280	425.3	2,985.6	0.18%	4.27	-	1.6	-	9.30	-	0.75
Le Meritt Holdings	30-Jun	SUSPENDED	SUSPENDED	0.0	0.0	-	-	75.87	-	0.00%	0.49	0.20	#VALUE!	-	0.98	50.00	-
Sugar																	
OMNICANE	31-Dec	88.00	88.00	0.0	(1.1)	54,216	4,776,958	67.01	5,897.1	2.56%	6.24	2.75	14.1	3.1	129.86	4.81	112.14
Transport																	
AIR MAURITIUS	31-Mar	16.60	16.70	0.6	4.4	18,920	315,014	102.31	1,708.5	0.74%	-	-	-	-	33.32	-	0.50
Foreign																	
DALE CAPITAL GROUP LIMITED	28-Feb	2.80	2.80	0.0	(26.3)	-	-	25.78	72.2	0.03%	-	-	-	-	(0.05)	-	-
Funds/GBL Companies																	
Sanlam Africa Core Real Estate Fund Ltd (Class A Shares) USD	31-Dec	5.50	5.50	0.0	-	-	-	-	-	-	0.75	0.13	7.3	2.4	5.75	13.04	1.00
EXCHANGE TRADED FUND(ETF)																	
NewGold Issuer Limited	-	386.85	386.85	0.0	-	-	-	-	-	-	-	-	-	-	-	-	1.00
NewPlat Limited	-	434.25	434.25	0.0	-	-	-	-	-	-	-	-	-	-	-	-	2.00
Total						41,560,457	204,405,212		230,332.2								

Code	Debentures	Nominal Value (Rs)	Price 25.07.2014	Price 01.08.2014	Volume Traded	Value Traded (Rs)	YTM on last traded price (%)	Accrued Interest (Rs)	Redemption Date	Maturity Date
MCB.D2023	The Mauritius Commercial Bank Ltd - Notes	1,000.00	1,042.12	1,053.44	969.00	1,019,645	5.28	14.79	8-Aug-13	8-Aug-23
NRL.D0701	Lux Island Resorts Ltd - F / P - Convertible Bond	10.00	11.60	11.59	60,827.00	705,573	3.38	0.31	31-Mar-11	31-Dec-17
OMNI.D0501	Omnicane Ltd - Notes	1,000,000.00	1,000,000.00	1,000,000.00	-	-	7.15	9,990.41	16-Aug-12	15-Aug-17
OMNI.D0301	Omnicane Ltd - Notes (Second Issue)	100,000.00	100,522.13	100,522.13	-	-	5.60	298.71	18-Jan-13	17-Jan-16
SBMD2024	State Bank of Mauritius Ltd - Bond (Rs)	10,000.00	10,091.27	10,090.06	-	-	5.88	243.33	10-Mar-14	10-Mar-24
SBMD2021	State Bank of Mauritius Ltd - Bond (USD)	1000.00 (USD)	1,000.47	1,000.47	-	-	2.06	3.80	30-May-14	30-May-21
UBP.D0018	United Basalt Products - Bonds	100.00	100.48	100.72	-	-	5.66	0.59	31-Oct-13	31-Oct-18

Sector/Stock	Year-end	Price 25.07.2014	Price 01.08.2014	Change for the week(%)	Change since 31.12.13 (%)	Volume traded	Value traded	Shares in Issue(m)	Market Cap (Rsm)	Weighted Market cap	EPS hist (Rs)	DPS hist (Rs)	PER hist (x)	Yield hist (%)	Latest NAV (Rs)	ROE (%)	Price/NAV Ratio
Banks, Insurance & Other Finance																	
ANGLO MAURITIUS ASSURANCE	31-Dec	705.00	705.00	0.0	8.5	-	-	2.63	1,854.2	3.94%	34.16	41.80	20.6	5.9	-	-	-
Commerce																	
ABC MOTORS	30-Jun	102.75	102.75	0.0	(19.9)	-	-	6.18	634.5	1.35%	8.35	1.70	12.3	1.7	71.64	11.66	1.43
ASSOCIATED COMMERCIAL	30-Jun	167.00	167.00	0.0	2.5	1,000	167,000	1.14	190.7	0.41%	24.67	4.00	6.8	2.4	242.16	10.19	0.69
CHEMCO	31-Dec	21.95	21.95	0.0	(2.4)	-	-	6.21	136.3	0.29%	1.26	1.00	17.4	4.6	16.27	7.74	1.35
CIE IMMOBILIERE	31-Dec	450.00	450.00	0.0	(8.0)	-	-	0.27	119.7	0.25%	25.50	17.00	-	3.8	1,056.19	-	0.43
Information Communication & Technology																	
BHARAT TELECOM	31-Mar	62.00	62.00	0.0	(3.1)	-	-	19.14	1,186.7	2.52%	-	-	-	-	8.66	-	-
Industry																	
BYCHEMEX	31-Dec	10.45	11.00	5.3	2.8	209	2,295	5.00	55.0	0.12%	0.27	0.60	40.7	5.7	6.76	3.99	1.63
FORGES TARDIEU	31-Dec	167.00	167.00	0.0	(1.8)	-	-	1.92	320.6	0.68%	-	7.50	-	4.5	182.04	-	0.92
LES GAZ INDUSTRIELS	30-Jun	117.00	117.00	0.0	(12.7)	-	-	2.61	305.5	0.65%	3.06	3.00	38.2	2.6	91.04	3.36	1.29
LIVESTOCK FEED (O)	30-Jun	23.50	23.50	0.0	8.5	1,598	37,553	31.50	740.3	1.57%	1.96	0.90	12.0	3.8	39.24	4.99	0.60
LIVESTOCK FEED (P)	30-Jun	19.50	19.50	0.0	(11.8)	-	-	-	-	0.00%	-	1.20	-	6.2	-	-	-
LES MOULINS DE LA CONCORDE (O)	30-Jun	153.00	153.00	0.0	(10.0)	-	-	5.40	826.2	1.76%	14.85	8.00	10.3	5.2	240.68	6.17	0.64
LES MOULINS DE LA CONCORDE (P)	30-Jun	322.00	322.00	0.0	0.6	2	644	-	-	0.00%	-	20.00	-	6.2	-	-	-
MAURITIUS COSMETICS	31-Dec	53.00	53.00	0.0	(7.8)	-	-	4.50	238.5	0.51%	21.65	0.60	2.4	1.1	222.10	9.75	0.24
MARGARINE INDUSTRIES	31-Dec	923.00	923.00	0.0	0.0	-	-	0.30	276.9	0.59%	78.74	60.00	11.7	6.5	626.37	12.57	1.47
MAURITIUS SECONDARY INDUSTRIES	30-Jun	33.35	33.35	0.0	0.9	-	-	0.80	26.7	0.06%	8.69	1.20	3.8	3.6	63.08	13.78	0.53
PAPER CONVERTING	31-Dec	50.00	50.00	0.0	0.0	-	-	1.50	75.0	0.16%	13.97	0.60	3.6	1.2	171.60	8.14	0.29
QUALITY BEVERAGE	31-Dec	6.00	6.00	0.0	(24.8)	-	-	7.11	42.7	0.09%	-	-	-	-	45.36	-	0.13
SOAP & ALLIED INDUSTRIES	31-Dec	24.25	24.25	0.0	(23.6)	2,000	48,500	4.10	99.4	0.21%	0.71	-	34.0	-	58.10	1.23	0.42
SODIA	30-Jun	0.15	0.15	0.0	(11.8)	40,000	6,000	210.00	31.5	0.07%	-	-	-	-	0.02	-	7.50
VITAL WATER BOTTLING	31-Dec	51.00	51.00	0.0	0.0	30	1,530	2.20	112.0	0.24%	4.08	3.00	-	5.9	24.73	-	2.06
Investments																	
ALMA INVESTMENT	30-Jun	150.00	150.00	0.0	50.0	668	100,673	7.33	1,099.7	2.34%	3.16	5.55	-	3.7	241.51	-	0.62
ASCENCIA Ltd (Class A Shares)	30-Sep	1,450.00	1,450.00	0.0	3.6	1,329	1,927,050	1.42	2,063.8	4.39%	54.39	36.65	26.7	2.5	1,431.36	3.80	1.01
ASCENCIA Ltd (Class B Shares)	30-Sep	1,500.00	1,500.00	0.0	0.0	-	-	1.0	1,572.0	3.34%	-	-	-	-	-	-	-
BLACK RIVER INVESTMENT	30-Jun	3,690.00	3,690.00	0.0	36.7	-	-	0.55	2,029.5	4.32%	27.16	96.50	-	2.6	5,026.48	-	0.73
ENL INVESTMENT LTD	30-Jun	46.10	46.00	(0.2)	(8.0)	31,012	1,426,993	86.29	3,969.3	8.44%	18.00	1.50	2.6	3.3	85.25	21.11	0.54
ENL LTD (P)	30-Jun	25.00	25.20	0.8	(6.7)	220,600	5,479,200	-	-	0.00%	-	0.26	-	1.0	62.39	-	-
EUDCOS	30-Jun	15.00	15.50	3.3	3.7	20,000	310,000	121.45	1,882.5	4.00%	0.94	0.68	16.5	4.5	11.72	8.02	1.32
FIDES	30-Jun	83.50	83.50	0.0	(17.7)	550	45,950	8.82	736.5	1.57%	16.17	2.00	5.2	2.4	168.38	26.12	0.50
MEDINE SHARE HOLDING (O)	30-Jun	3,400.00	3,400.00	0.0	59.6	-	-	0.60	2,053.6	4.37%	19.68	76.40	-	2.2	4,100.92	-	0.83
MEDINE SHARE HOLDING (P)	30-Jun	2,870.00	2,870.00	0.0	(4.0)	-	-	-	-	0.00%	-	76.40	-	2.7	-	-	-
PHOENIX INVESTMENT	30-Jun	121.00	121.00	0.0	(3.2)	996	120,516	5.69	687.9	1.46%	4.80	6.74	25.2	5.6	164.68	2.91	0.73
RHT HOLDING LTD	30-Jun	32.50	32.50	0.0	(7.1)	-	-	12.16	395.2	0.84%	4.46	0.45	-	1.4	53.72	-	0.60
UNITED INVESTMENT	30-Jun	10.05	10.15	1.0	(7.7)	1,700	17,255	151.46	1,537.3	3.27%	1.87	0.08	5.4	-	11.13	16.80	0.91
Leisure & Hotels																	
CONSTANCE HOTELS SERVICES	31-Dec	34.50	34.50	0.0	(6.8)	1,200	41,400	63.96	2,206.6	4.69%	-	-	-	-	47.67	-	0.72
MORNING LIGHT	31-Dec	42.00	42.00	0.0	0.0	-	-	45.96	1,930.4	4.10%	0.38	0.20	-	0.5	23.63	-	1.78
SOUTHERN CROSS TOURIST HOTEL	31-Dec	6.00	6.00	0.0	(9.1)	13,000	78,000	125.64	753.9	1.60%	0.27	0.20	22.2	3.3	3.24	8.34	1.85
TROPICAL PARADISE (O)	30-Jun	7.50	7.50	0.0	11.9	-	-	122.50	918.8	1.95%	0.08	0.00	-	-	11.70	-	0.64
TROPICAL PARADISE (P)	30-Jun	191.00	191.00	0.0	2.7	-	-	-	-	0.00%	-	8.00	-	4.2	-	-	-
Mineral & Exploration																	
SHUMBA COAL -(USD)	31-Dec	0.12	0.12	-	-	-	-	170.89	622.2	1.32%	-	-	-	-	0.02	-	7.06
Others																	
CARGOHUB CAPITALI Ltd - (Eur)	31-Dec	30.00	30.00	0.0	-	-	-	1.13	-	0.00%	3.01	-	10.0	-	13.73	21.92	2.18
COVIFRA	31-Oct	7.50	7.50	0.0	(18.8)	-	-	56.61	424.6	0.90%	0.10	0.10	75.0	-	37.21	0.27	0.20
CIEL TEXTILE LTD	30-Jun	33.00	33.75	2.3	33.4	151,200	5,055,800	101.81	3,436.0	7.31%	4.50	1.50	7.5	4.5	33.51	13.43	1.01
HOTELEST	31-Dec	33.00	33.00	0.0	4.8	200	6,600	32.62	1,076.5	2.29%	-	-	-	-	47.45	-	0.70
MEDICAL & SURGICAL CENTRE	30-Jun	1.70	1.65	(2.9)	(1.8)	38,800	63,360	569.94	940.4	2.00%	0.09	0.03	18.3	0.3	0.93	9.68	1.77
MAURITIUS FREEPORT DEVELOPMENT	31-Dec	10.90	11.00	0.9	57.1	100	1,100	150.00	1,650.0	3.51%	0.32	-	34.4	-	6.37	5.02	1.73
SIT LAND HOLDINGS OPT	30-Jun	15,000.00	14,000.00	(6.7)	(22.3)	1	14,000	-	-	-	-	-	-	-	-	-	-
Sugar																	
CONSTANCE LA GAIETE	31-Dec	150.00	150.00	0.0	(3.2)	-	-	4.80	720.0	1.53%	-	4.50	-	3.0	117.07	-	1.28
MEDINE LTD (O)	30-Jun	68.50	68.50	0.0	0.7	2,000	137,000	86.94	5,955.4	12.66%	0.38	1.20	-	1.8	85.15	-	0.80
MEDINE LTD (P)	30-Jun	68.00	68.50	0.7	10.9	8,320	565,930	-	-	0.00%	-	1.20	-	1.8	-	-	-
UNION SUGAR ESTATE	31-Dec	49.75	48.00	(3.5)	(7.7)	4,400	211,100	18.90	907.2	1.93%	2.01	-	-	-	63.43	-	0.76
Transport																	
UNITED BUS SERVICE	30-Jun	37.70	37.70	0.0	(3.3)	-	-	4.97	187.3	0.40%	9.82	1.00	3.8	2.7	42.11	23.32	0.90
Total						540,915	15,865,449		47,028.6								

Code	Debentures	Nominal Value (Rs)	Price 25.07.2014	Price 01.08.2014	Volume Traded	Value Traded (Rs)	YTM on last traded price (%)	Accrued Interest	Redemption Date	Maturity Date
UTIN.B0401	United Investments Ltd - Bond	100.00	99.97	99.97	-	-	7.34	0.78	31-Jan-12	31-Jan-16