

MARKET HIGHLIGHTS

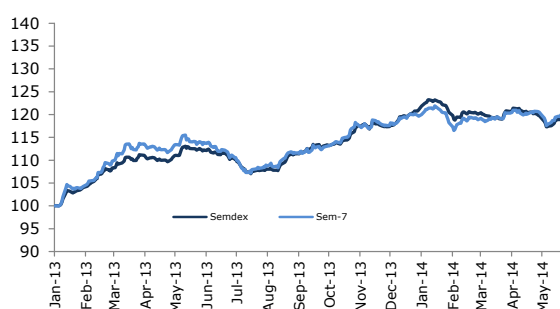
23 May 2014

INDICES	LATEST	W-O-W % CHANGE	YTD % CHANGE
LOCAL (Friday's closing)			
SEMDEX	2,071.78	0.8	(1.1)
SEM-7	406.26	0.9	0.6
DEMEX	176.74	(0.6)	1.7
REGIONAL (Friday's closing)			
FTSE/JSE (SOUTH AFRICA)	49,891.36	1.5	7.9
NGSE (NIGERIA)	39,552.99	1.4	(4.3)
EGX 30 (EGYPT)	8,727.54	2.0	28.7
NSEASI (KENYA)	150.05	(0.7)	9.8
BGSMDC (BOTSWANA)	9,018.48	0.5	(0.4)
GGSECI (GHANA)	2,249.55	0.2	4.9
INTERNATIONAL (Friday's closing)			
DOW JONES	16,543.08	0.3	(0.2)
CAC 40	4,478.21	0.5	4.2
SENSEX	24,374.40	1.0	15.1
DAX	9,720.91	1.0	1.8
NIKKEI	14,337.79	1.7	(12.0)
FTSE 100	6,820.56	(0.5)	1.1

	%
GDP growth (2014F) by CSO	3.7
UNEMPLOYMENT RATE	8.0
CPI HEADLINE INFLATION	4.0
BUDGET DEFICIT (% of GDP) - 2013	3.7
REPO RATE	4.65
BANK RATE	2.82
91 DAY T-BILLS	N/A
182 DAY T-BILLS	N/A
273 DAY T-BILLS	2.79
364 DAY T-BILLS	N/A
5-YEAR GOVT BONDS	5.54
15-YEAR GOVT BONDS	7.60

FOREX	LATEST	W-O-W % CHANGE	YTD % CHANGE
MUR/US\$	30.30	0.0	-0.7
MUR/GBP	51.13	0.5	3.7
MUR/INR	0.51	0.6	-8.4
MUR/JPY	29.59	-0.2	-16.5
MUR/ZAR	2.92	0.5	-18.6
MUR/EURO	41.38	-0.5	2.6

Rebased Indices Evolution



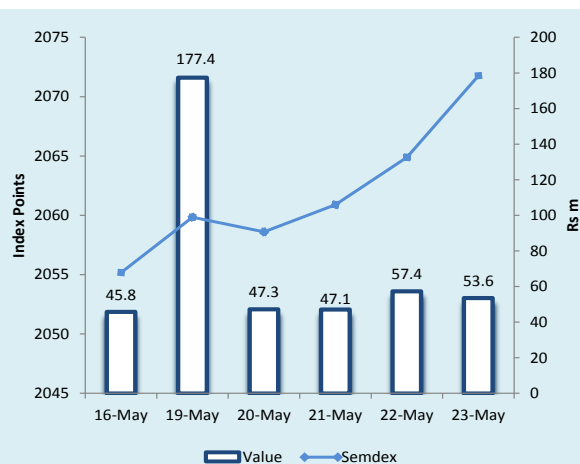
Highlights

- ▶ **Banks: MCBG +2.8%; SBM unch.; Bramer -1.1%**
- ▶ **Hotels: NMH unch.; Lux Island +6.0%; Sun Resorts +2.7%**
- ▶ Lottotech, SBM, RockCastle & CIEL Limited Communique
- ▶ MCBG and Ciel Textile reached new record highs

Anglo-Mauritius Stockbrokers (Research)

research@anglo.mu

	Wk/ending 16.05.2014	Wk/ending 23.05.2014
SECTORAL INDICES		
BANKING INDEX	3,300.41	3346.60
HOTEL INDEX	330.51	336.55
FOREIGN TRANSACTIONS (Rsm)		
TOTAL FOREIGN PURCHASES	127.9	281.2
TOTAL FOREIGN SALES	93.2	146.3
NET FOREIGN INFLOW/(OUTFLOW)	34.7	134.9
MARKET CAPITALISATION (Rsbn)		
OFFICIAL & DEM	266.5	267.6
DIVIDEND YIELD (%)		
OFFICIAL MARKET	2.9	2.9
PER(x)		
OFFICIAL MARKET	12.7	12.8



News

Lottotech: The Offer for Sale of up to 85,000,000 Ordinary Shares of no par value has been successful and oversubscribed. As a result of the oversubscription, the Board of Directors will proceed to decide the allotment of shares, following consultation with the regulatory authorities and further communique will be issued pertaining to the allotment in due time.

State Bank: The offer for subscription of Class B 1 Series USD Bond of US\$ 50M due 2021 was fully subscribed, at date of offer closure 16 May 2014. SBM has received subscriptions for an amount of USD 65 Million and will now proceed with the allotment of the Bonds on 09 June 2014. The date of admission of the Bonds on the Official Market of the SEM has been scheduled for 18 June 2014. On the first day of Trading, SBM will make available a minimum of 100 Bonds (or such higher number as the Board may at its sole discretion determine) at an indicative price of USD 1,000 per Bond.

Rockcastle: Following the announcement released on Thursday, 15 May 2014, Rockcastle has closed its placement increasing the quantity of shares placed in light of the demand. Accordingly, the Company has placed 175 500 000 new Rockcastle shares with investors. The new Rockcastle shares are expected to list and trade on the SEM and JSE from Friday, 30 May 2014. The new Rockcastle shares will rank for dividends in respect of the period 1 January 2014 to 30 June 2014.

Ciel Limited: The conditions precedents have been fulfilled in respect of the participation of Société de Promotion et de Participation pour la Coopération Economique S.A. ("PROPARCO") in the share capital of the Company. The shares issued to PROPARCO will be listed on the Official Market of the Stock Exchange of Mauritius Ltd as from the date of their issue.

Official Market

Indices pursued their ascension whereby the **Semdex** and **SEM-7** went up by 0.8% and 0.9% to reach 2,071.78 points and 406.26 points respectively. **Total turnover** amounted to Rs382.7m (US\$12.6m), geared towards MCBG and State Bank, which altogether occupied 73% of TMT. Yet again, **foreign investors** were net buyers, however on a larger amount this week to the tune of Rs134.9m.

After gradually ascending from the start of the week, **MCBG concluded on a new record high of Rs220.00 (+2.8%) today**, with a total number of 397.7k shares (VWAP Rs216.56) exchanged overall. Foreign investors were net buyers on the largest banking stock to the amount of Rs55.7m. **State Bank** was significantly exchanged by foreign investors this week, whereby they accounted for Rs188.6m of purchases and Rs130.5m of sales, thereby resulting in net purchases of Rs58.1m. The stock finished the week unchanged at Rs1.05, with 182.6m shares (VWAP Rs1.05) traded overall. Other banking group **Bramer Banking** shed off 1.1% to Rs6.88, with 227.1k shares traded. The financial company **CFS** rose by 0.8% to Rs7.92, at which price significant volume of 928.5k shares were exchanged. On **insurance side**, MUA was the sole mover where it went up to Rs134.50 (+0.4%), with 38.1k shares exchanged.

Both **Innodis** (unch.) and **IBL** (-0.5%) saw notable volume of 108k and 31.7k shares traded during the week. **Vivo Energy** let off some steam, after last week's rally propelled by a dividend announcement, where the stock lost 4.2% to Rs126.00. **ENL Commercial** dropped to Rs21.40 (-1.8%).

Moroil went down further this week to Rs27.05 (-1.3%). On the other hand, construction companies **Gamma Civic** and **UBP** maintained their uptrend where each stock gained 3.7%, with volumes of 73.4k and 18.6k shares respectively traded.

The top three traded stocks by value, on the investment counter were; **Ciel Limited** which went up to Rs6.40 (+1.3%), **ENL Land (O)** which dropped to Rs50.50 (-0.5%) and **Alteo** which fell to Rs34.50 (-1.4%). However, the top movers were **MDIT** (-4.5%), **NIT** (-3.2%), **ENL Land (P)** (+2.7%) and **Policy** (-2.0%).

On the hotel counter, **NMH** remained level at Rs84.50, at which price most of the 176.7k shares were exchanged over the week. **LUX was the star of the week, so to speak, where it climbed up to finally close at Rs43.00 today (+6.0%)**, with a total of 377.7k shares traded. **Sun Resorts** followed suit to move up to Rs40.20 (+2.7%). **ASL** rebounded from last week's losses to reach Rs114.00 (+6.3%).

Omnican dropped by 1.2% to Rs83.00 on 4.5k shares. **Bluelife** saw significant crosses during the week and gained 8.4% to reach Rs7.50, with a total volume of 391k shares exchanged.

DEM Market

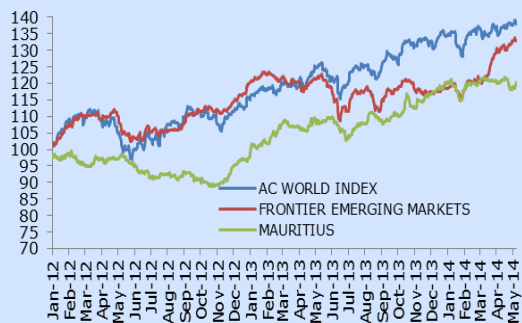
The **Demex** gave up 0.6% to finish at 176.74 points. Overall **market turnover** amounted to Rs23.2m, mainly geared towards **Ciel Textile** (+2.0%), **UTIN** (unch.), **Southern Cross** (-4.2%) and **Medine (P)** (-2.7%). **Ciel Textile** reached a new record high of Rs30.60 (+2.0%), with 231.9k shares exchanged (VWAP Rs30.00). The top movers on the DEM counter included **Sodia** (-12.5%), **Bharat Telecom** (-6.7%), **EUDCOS** (-5.9%), **ENL Investment** (-3.1%), **Tropical Paradise (P)** (+7.1%) and **Hotelest** (+3.2%).

Dividend

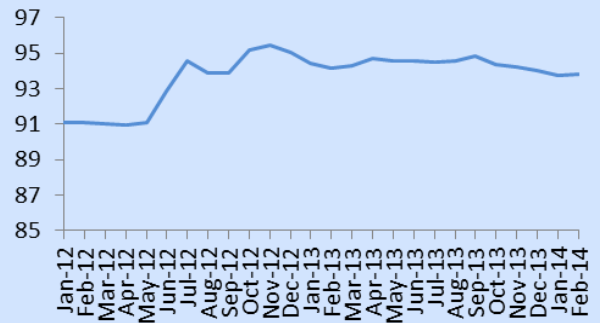
Company	Financial Year	Amount Rs	Last cum date	Payment date
OFFICIAL				
State Bank	31-Dec-2014	0.011	10-Jun-2014	27-Jun-2014
MUA	31-Dec-2014	1.50	23-May-2014	20-Jun-2014
POLICY	31-Dec-2014	0.15	27-May-2014	16-Jun-2014
Gamma Civic	31-Dec-2013	0.72	27-May-2014	30-Jun-2014
UBP	30-Jun-2014	2.75	28-May-2014	25-Jun-2014
ENL Land Ordinary	30-Jun-2014	0.64	28-May-2014	31-Jul-2014
ENL Land Non Voting Redeemable Pref.	30-Jun-2014	2.80	28-May-2014	31-Jul-2014
ENL Commercial	30-Jun-2014	0.60	28-May-2014	31-Jul-2014
Vivo Energy	31-Dec-2013	2.80	28-May-2014	30-Jun-2014
Lux Island Resorts	30-Jun-2014	0.50	28-May-2014	23-Jun-2014
IBL	30-Jun-2014	1.85	29-May-2014	27-Jun-2014
IPRO Growth Fund		0.70		26-Jun-2014
Plastic Industries (Mauritius)	30-Jun-2014	2.75	09-Jun-2014	30-Jun-2014
State Bank	31-Dec-2014	0.013	08-Sept-2014	25-Sept-2014*
DEM				
FIDES	30-Jun-2014	1.75	26-May-2014	18-Jun-2014
Tropical Paradise Ordinary	30-Jun-2014	0.06	28-May-2014	27-Jun-2014
Tropical Paradise Preference	30-Jun-2014	16.00	28-May-2014	27-Jun-2014
ENL Investment	30-Jun-2014	0.75	29-May-2014	31-Jul-2014
ENL Ltd (P)	30-Jun-2014	0.39	29-May-2014	31-Jul-2014
United Investments	30-Jun-2014	0.16	30-May-2014	30-Jun-2014

*Subject to regulatory approval

World Equity – MSCI



Mauritius Exchange Rate



Forex

USD



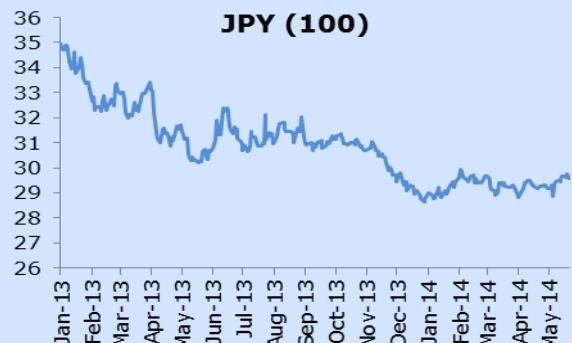
GBP



EUR



JPY (100)



Sector/Stock	Year-end	Price 16.05.2014	Price 23.05.2014	Change for the week(%)	Change since 31.12.13 (%)	Volume traded	Value traded	Shares in issue(m)	Market Cap (Rsm)	Weighted Market cap	EPS hist (Rs)	DPS hist (Rs)	PER hist (x)	Yield hist (%)	Latest NAV (Rs)	ROE (%)	Price/NAV Ratio
Banks, Insurance & Other Finance																	
BRAMER BANKING	31-Dec	6.96	6.88	(1.1)	(13.8)	227,110	1,584,283	901.29	6,200.9	2.80%	0.10	0.02	68.80	0.3	1.42	-	4.85
CIM FINANCIAL SERVICES	30-Sep	7.86	7.92	0.8	(2.7)	928,466	7,350,449	680.52	5,389.7	2.43%	0.73	0.22	10.8	2.78	3.88	18.81	2.04
MCB Group	30-Jun	214.00	220.00	2.8	4.8	397,664	86,119,644	237.98	52,354.9	23.63%	18.15	6.10	12.1	2.77	131.54	13.80	1.67
MEI	30-Jun	112.00	112.00	0.0	6.7	80	8,800	8.00	896.0	0.40%	14.56	3.50	7.7	3.1	99.61	14.62	1.12
MUA	31-Dec	134.00	134.50	0.4	9.3	38,050	5,104,575	20.04	2,695.4	1.22%	12.95	5.00	10.4	3.7	88.14	14.69	1.53
SBM	31-Dec	1.05	1.05	0.0	1.0	182,592,637	191,721,463	30,374.02	31,892.7	14.40%	0.12	0.06	8.9	5.7	0.76	15.61	1.38
SWAN	31-Dec	298.00	298.00	0.0	(5.4)	104	30,994	8.28	2,466.0	1.11%	27.13	10.90	11.0	3.7	207.28	13.09	1.44
Commerce																	
CMPL	31-Dec	26.45	26.45	0.0	(2.0)	4,300	113,735	2.19	58.0	0.03%	0.15	0.50	176.3	1.9	51.44	-	0.51
ENL COMMERCIAL	30-Jun	21.80	21.40	(1.8)	(4.9)	28,826	623,307	29.17	624.3	0.28%	-	1.60	-	7.5	24.62	-	0.87
H MALLAC	31-Dec	119.00	119.00	0.0	10.2	2,000	238,000	11.26	1,339.9	0.60%	-	3.00	-	2.5	145.48	-	0.82
INNODIS	30-Jun	56.75	56.75	0.0	9.1	108,001	6,120,182	36.73	2,084.4	0.94%	4.43	1.80	12.8	3.2	52.17	8.49	1.09
IBL	30-Jun	106.50	106.00	(0.5)	3.9	31,745	3,366,080	71.44	7,572.5	3.42%	7.92	2.50	13.4	2.4	67.52	11.73	1.57
VIVO ENERGY	31-Dec	131.50	126.00	(4.2)	(17.1)	1,600	203,125	29.32	3,694.6	1.67%	7.59	1.00	16.6	0.8	19.66	38.60	-
Industry																	
GAMMA CIVIC	31-Dec	45.80	47.50	3.7	35.7	73,430	3,454,535	133.25	6,329.4	2.86%	0.78	0.90	60.7	1.9	18.23	4.29	2.61
GO LIFE INTERNATIONAL PCC	28-Feb	0.04	0.04	0.0	0.0	-	-	96.65	58.2	0.03%	0.00	-	10.0	-	0.05	-	-
PBL	30-Jun	190.00	190.00	0.0	(0.5)	2,020	383,900	16.45	3,124.9	1.41%	5.83	8.00	32.6	4.2	193.66	3.01	0.98
MCFI	30-Jun	23.00	22.50	(2.2)	(6.3)	75,200	1,692,000	22.01	495.1	0.22%	0.55	1.00	40.9	4.4	34.24	1.61	0.66
MOROIL	30-Jun	27.40	27.05	(1.3)	(3.4)	14,332	386,831	33.28	900.2	0.41%	1.40	1.40	19.3	5.2	11.78	11.88	2.30
PIM	30-Jun	77.00	77.00	0.0	0.0	6,017	463,309	2.00	154.0	0.07%	4.74	3.25	16.2	4.2	55.36	8.56	1.39
UBP	30-Jun	82.00	85.00	3.7	(10.5)	18,640	1,530,580	26.51	2,253.4	1.02%	6.06	3.00	14.0	3.5	114.43	5.30	0.74
Investments																	
ALTANTIC LEAF PROPERTIES - (GBP)	28-Feb	1.00	1.00	0.0	-	-	-	-	-	-	-	-	-	-	-	-	-
ALTEO LIMITED	30-Jun	35.00	34.50	(1.4)	(6.8)	200,602	6,947,726	318.49	10,988.0	4.96%	2.61	0.75	-	-	49.83	-	0.69
BMH	31-Dec	250.00	250.00	0.0	6.4	1,000	250,000	4.27	1,066.7	0.48%	10.36	8.00	24.1	3.2	437.00	2.37	0.57
CAUDAN	30-Jun	1.10	1.10	0.0	(2.7)	358,300	394,130	819.52	901.5	0.41%	0.05	0.04	22.0	3.6	3.54	-	0.31
CIEI LIMITED	30-Jun	6.32	6.40	1.3	1,291,018	8,148,814	1,231.35	7,880.6	3.56%	0.37	0.14	17.2	2.19	8.75	-	0.73	
FINCORP	30-Jun	18.65	18.65	0.0	0.8	19,800	369,270	103.36	1,927.6	0.87%	0.27	0.30	69.1	1.6	36.07	-	0.52
MDIT	30-Jun	5.72	5.46	(4.5)	(9.0)	527,961	2,923,609	423.39	2,311.7	1.04%	0.84	0.31	-	5.7	4.12	-	1.33
NDT	30-Jun	46.00	44.55	(3.2)	4.3	7,584	347,258	13.70	610.4	0.28%	0.46	0.60	-	1.3	70.13	-	0.64
PAD	30-Jun	82.00	83.00	1.2	0.0	35,485	2,919,325	38.91	3,229.5	1.46%	-	1.50	-	1.8	192.61	-	0.43
POLICY	31-Dec	8.20	8.04	(2.0)	7.2	94,714	767,526	226.99	1,825.0	0.82%	0.52	0.40	15.5	5.0	5.81	8.95	1.38
ROCKCASTLE	31-Mar	1.40	1.40	0.0	7.7	1,500	63,454	-	-	-	-	0.01	-	-	1.21	-	1.16
ROGERS	30-Sep	204.50	202.00	(1.2)	1.5	10,679	2,141,934	25.20	5,091.3	2.30%	69.46	6.00	2.9	3.0	353.12	19.67	0.57
ENL LAND (O)	30-Jun	50.75	50.50	(0.5)	0.0	144,323	7,225,975	230.50	11,640.3	5.25%	5.90	1.22	8.6	2.4	68.27	8.64	0.74
ENL LAND (P)	30-Jun	44.00	45.20	2.7	0.4	21,940	991,680	-	-	-	-	2.80	-	6.2	-	-	
TERRA	31-Dec	36.10	36.00	(0.3)	(7.7)	29,397	1,059,836	227.55	8,191.8	3.70%	1.60	0.80	22.5	2.2	72.01	2.22	0.50
UNITED DOCKS	30-Jun	69.00	69.00	0.0	(4.8)	11,397	786,393	10.56	728.6	0.33%	-	-	-	-	176.60	-	0.39
Leisure & Hotels																	
ASL	31-Dec	107.25	114.00	6.3	(0.9)	1,139	126,200	3.54	403.0	0.18%	11.60	10.00	9.8	8.8	9.45	122.77	12.07
NMH	30-Sep	84.50	84.50	0.0	(4.5)	176,690	14,923,762	161.42	13,640.3	6.16%	2.29	1.00	36.9	-	86.25	-	0.98
LUX ISLAND RESORTS	30-Jun	40.55	43.00	6.0	9.4	377,676	16,027,172	114.03	4,903.5	2.21%	0.91	-	47.3	-	34.29	-	1.25
SUN RESORTS	31-Dec	39.15	40.20	2.7	(3.4)	1,370	55,199	113.40	4,558.6	2.06%	-	-	-	-	47.74	-	0.84
Property Development																	
BlueLife Limited	31-Dec	6.92	7.50	8.4	-	391,025	2,856,036	425.3	3,189.8	0.19%	4.27	-	1.8	-	9.30	-	0.81
Le Meritt Holdings	30-Jun	6.00	5.94	(1.0)	(15.1)	5,100	30,926	75.87	450.7	0.20%	0.49	0.20	12.1	-	0.98	50.00	-
Sugar																	
OMNICANE	31-Dec	84.00	83.00	(1.2)	(6.7)	4,480	370,190	67.01	5,562.0	2.51%	6.24	2.75	13.3	3.3	129.86	4.81	112.14
Transport																	
AIR MAURITIUS	31-Mar	17.10	17.30	1.2	8.1	83,181	1,426,724	102.31	1,769.9	0.80%	-	-	-	-	33.32	-	0.52
Foreign																	
DALE CAPITAL GROUP LIMITED	28-Feb	3.50	3.50	0.0	(7.9)	-	-	25.78	90.2	0.04%	-	-	-	-	(0.05)	-	-
Funds/GBL Companies																	
Sanlam Africa Core Real Estate Fund Ltd (Class A Shares) USD	31-Dec	5.60	5.60	0.0	-	-	-	-	-	-	0.75	0.13	7.5	2.3	5.75	13.04	1.00
EXCHANGE TRADED FUND(ETF)																	
NewGold Issuer Limited		376.00	376.00	0.0	-	-	-	-	-	-	-	-	-	-	-	-	1.00
NewPlat Limited		434.25	434.25	0.0	-	-	-	-	-	-	-	-	-	-	-	-	2.00
Total						188,347,583	382,679,938		221,545.5								

Code	Debentures	Nominal Value (Rs)	Price 16.05.2014	Price 23.05.2014	Volume Traded	Value Traded (Rs)	YTM on last traded price (%)	Accrued Interest (Rs)	Redemption Date	Maturity Date
MCB.D2023	The Mauritius Commercial Bank Ltd - Notes	1,000.00	1,031.30	1,031.30	1,000.00	1,031,190	5.56	3.29	8-Aug-23	8-Aug-23
NRL.D0701	Lux Island Resorts Ltd - F / P - Convertible Bond	10.00	11.30	11.30	-	-	4.47	0.14	31-Dec-17	31-Dec-17
OMNI.D0501	Omnican Ltd - Notes	1,000,000.00	1,000,000.00	1,000,000.00	-	-	7.15	31,930.14	15-Aug-17	15-Aug-17
OMNI.D0301	Omnican Ltd - Notes (Second Issue)	100,000.00	100,522.13	100,522.13	-	-	5.50	2030.14	17-Jan-16	17-Jan-16
SBMD2024	State Bank of Mauritius Ltd - Bond - Intro - 25.03.14	10,000.00	10,091.27	10,091.27	-	-	5.88	130.00	10-Mar-24	10-Mar-24
UBPD0018	United Basat Products - Bonds	100.00	100.52	100.52	-	-	5.72	0.93	31-Oct-18	31-Oct-18

Sector/Stock	Year-end	Price 16.05.2014	Price 23.05.2014	Change for the week(%)	Change since 31.12.13 (%)	Volume traded	Value traded	Shares in issue(m)	Market Cap (Rsm)	Weighted Market cap	EPS hist (Rs)	DPS hist (Rs)	PER hist (x)	Yield hist (%)	Latest NAV (Rs)	ROE (%)	Price /NAV Ratio
Banks, Insurance & Other Finance																	
ANGLO MAURITIUS ASSURANCE	31-Dec	700.00	700.00	0.0	7.7	293	205,100	2.63	1,841.0	4.23%	34.16	41.80	20.5	6.0	-	-	-
Commerce																	
ABC MOTORS	30-Jun	102.75	102.75	0.0	(19.9)	-	-	6.18	634.5	1.46%	8.35	1.70	12.3	1.7	71.64	11.66	1.43
ASSOCIATED COMMERCIAL	30-Jun	171.25	171.25	0.0	5.1	12	2,067	1.14	195.6	0.45%	24.67	4.00	6.9	2.3	242.16	10.19	0.71
CHEMCO	31-Dec	21.05	21.05	0.0	(6.4)	-	-	6.21	130.7	0.30%	1.26	1.00	16.7	4.8	16.27	7.74	1.29
CIE IMMOBILIERE	31-Dec	450.00	450.00	0.0	(8.0)	-	-	0.27	119.7	0.27%	25.50	17.00	-	3.8	1,056.19	-	0.43
Information Communication & Technology																	
BHARAT TELECOM	31-Mar	45.00	42.00	(6.7)	(34.4)	100	4,200	19.14	803.9	1.84%	-	-	-	-	8.66	-	-
Industry																	
BYCHEMEX	31-Dec	10.50	10.50	0.0	(1.9)	200	2,100	5.00	52.5	0.12%	0.27	0.60	38.9	5.7	6.76	3.99	1.55
FORGES TARDIEU	31-Dec	167.75	167.75	0.0	(1.3)	-	-	1.92	322.1	0.74%	-	7.50	-	4.5	182.04	-	0.92
LES GAZ INDUSTRIELS	30-Jun	121.00	121.00	0.0	(9.7)	-	-	2.61	315.9	0.73%	3.06	3.00	39.5	2.5	91.04	3.36	1.33
LIVESTOCK FEED (O)	30-Jun	22.50	22.50	0.0	3.9	979	22,645	31.50	708.8	1.63%	1.96	0.90	11.5	4.0	39.24	4.99	0.57
LIVESTOCK FEED (P)	30-Jun	21.00	19.80	(5.7)	(10.4)	800	16,204	-	-	0.00%	-	1.20	-	5.7	-	-	-
LES MOULINS DE LA CONCORDE (O)	30-Jun	163.00	163.00	0.0	(4.1)	90	14,625	5.40	880.2	2.02%	14.85	8.00	11.0	4.9	240.68	6.17	0.68
LES MOULINS DE LA CONCORDE (P)	30-Jun	342.00	342.00	0.0	6.9	6	2,010	-	-	0.00%	-	20.00	-	5.8	-	-	-
MAURITIUS COSMETICS	31-Dec	53.00	53.00	0.0	(7.8)	-	-	4.50	238.5	0.55%	21.65	0.60	2.4	1.1	222.10	9.75	0.24
MARGARINE INDUSTRIES	31-Dec	923.00	923.00	0.0	0.0	-	-	0.30	276.9	0.64%	78.74	60.00	11.7	6.5	626.37	12.57	1.47
MAURITIUS SECONDARY INDUSTRIES	30-Jun	33.20	33.20	0.0	0.5	-	-	0.80	26.6	0.06%	8.69	1.20	3.8	3.6	63.08	13.78	0.53
PAPER CONVERTING	31-Dec	50.00	50.00	0.0	0.0	-	-	1.50	75.0	0.17%	13.97	0.60	3.6	1.2	171.60	8.14	0.29
QUALITY BEVERAGE	31-Dec	6.00	6.00	0.0	(24.8)	-	-	7.11	42.7	0.10%	-	-	-	-	45.36	-	0.13
SOAP & ALLIED INDUSTRIES	31-Dec	24.25	24.25	0.0	(23.6)	1,900	46,075	4.10	99.4	0.23%	0.71	-	34.0	-	58.10	1.23	0.42
SODIA	30-Jun	0.16	0.14	(12.5)	(17.6)	35,060	5,108	210.00	29.4	0.07%	-	-	-	-	0.02	-	7.00
VITAL WATER BOTTLING	31-Dec	51.00	51.00	0.0	0.0	-	-	2.20	112.0	0.26%	4.08	3.00	-	5.9	24.73	-	2.06
Investments																	
ALMA INVESTMENT	30-Jun	108.00	110.00	1.9	10.0	1,935	212,550	7.33	806.4	1.85%	3.16	5.55	-	5.1	241.51	-	0.46
ASCENCIA Ltd (Class A Shares)	30-Sep	1,500.00	1,500.00	0.0	7.1	1	1,450	1.42	2,130.0	4.89%	54.39	36.65	27.6	2.4	1,431.36	3.80	1.05
ASCENCIA Ltd (Class B Shares)	30-Sep	1,500.00	1,500.00	0.0	0.0	-	-	1.0	1,572.0	-	-	-	-	-	-	-	-
BLACK RIVER INVESTMENT	30-Jun	2,700.00	2,700.00	0.0	0.0	-	-	0.55	1,485.0	3.41%	27.16	96.50	-	3.6	5,026.48	-	0.54
ENL INVESTMENT LTD	30-Jun	49.00	47.50	(3.1)	(5.0)	8,088	387,974	86.29	4,098.7	9.41%	18.00	1.50	2.6	3.1	85.25	21.11	0.56
ENL LTD (P)	30-Jun	27.50	27.50	0.0	1.9	39,300	1,080,925	-	1.0	0.00%	-	0.26	-	0.9	62.39	-	-
EUDCOS	30-Jun	17.00	16.00	(5.9)	7.0	81,121	1,374,057	121.45	1,943.2	4.46%	0.94	0.68	17.0	4.0	11.72	8.02	1.37
FIDES	30-Jun	83.00	84.00	1.2	(17.2)	6,248	519,484	8.82	740.9	1.70%	16.17	2.00	5.2	2.4	168.38	26.12	0.50
MEDINE SHARE HOLDING (O)	30-Jun	2,460.00	2,460.00	0.0	15.5	-	-	0.60	1,485.8	3.41%	19.68	76.40	-	3.1	4,100.92	-	0.60
MEDINE SHARE HOLDING (P)	30-Jun	2,870.00	2,870.00	0.0	(4.0)	-	-	-	-	0.00%	-	76.40	-	2.7	-	-	-
PHOENIX INVESTMENT	30-Jun	118.00	118.00	0.0	(5.6)	-	-	5.69	670.8	1.54%	4.80	6.74	24.6	5.7	164.68	2.91	0.72
RHT HOLDING LTD	30-Jun	36.00	35.00	(2.8)	0.0	17,215	602,525	12.16	425.6	0.98%	4.46	0.45	-	1.3	53.72	-	0.65
UNITED INVESTMENT	30-Jun	10.00	10.00	0.0	(9.1)	500,040	5,000,400	151.46	1,514.6	3.48%	1.87	0.08	5.3	-	11.13	16.80	0.90
Leisure & Hotels																	
CONSTANCE HOTELS SERVICES	31-Dec	27.90	28.50	2.2	(23.0)	34,600	977,850	63.96	1,822.9	4.18%	-	-	-	-	47.67	-	0.60
MORNING LIGHT	31-Dec	42.00	42.00	0.0	0.0	-	-	45.96	1,930.4	4.43%	0.38	0.20	-	0.5	23.63	-	1.78
SOUTHERN CROSS TOURIST HOTEL	31-Dec	6.26	6.00	(4.2)	(9.1)	512,300	3,074,034	125.64	753.9	1.73%	0.27	0.20	22.2	3.2	3.24	8.34	1.85
TROPICAL PARADISE (O)	30-Jun	7.20	7.20	0.0	7.5	10,000	72,000	122.50	882.0	2.02%	0.08	0.00	-	-	11.70	-	0.62
TROPICAL PARADISE (P)	30-Jun	182.00	195.00	7.1	4.8	200	38,675	-	-	0.00%	-	8.00	-	4.4	-	-	-
Mineral & Exploration																	
SHUMBA COAL -(USD)	31-Dec	0.12	0.12	-	-	-	-	170.89	20.5	0.05%	-	-	-	-	0.02	-	7.06
Others																	
CARGOHUB CAPITALI Ltd - (Eur)	31-Dec	30.00	30.00	0.0	-	-	-	1.13	-	0.00%	3.01	-	10.0	-	13.73	21.92	2.18
COVIFRA	31-Oct	7.46	7.40	(0.8)	(19.9)	2,600	19,240	56.61	418.9	0.96%	0.10	0.10	74.0	-	37.21	0.27	0.20
CIEL TEXTILE LTD	30-Jun	30.00	30.60	2.0	20.9	231,889	7,012,870	101.81	3,115.3	7.15%	4.50	1.50	6.8	5.6	33.51	13.43	0.91
HOTELEST	31-Dec	26.65	27.50	3.2	(12.7)	1,000	27,500	32.62	897.1	2.06%	-	-	-	-	47.45	-	0.58
MEDICAL & SURGICAL CENTRE	31-Mar	1.68	1.65	(1.8)	(1.8)	2,500	4,140	569.94	940.4	2.16%	0.09	0.03	18.3	0.4	0.93	9.68	1.77
MAURITIUS FREEPORT DEVELOPMENT	31-Dec	8.00	8.00	0.0	14.3	2,000	16,000	150.00	1,200.0	2.75%	0.32	-	25.0	-	6.37	5.02	1.26
SIT LAND HOLDINGS OPT	30-Jun	16,550.00	16,550.00	0.0	(8.1)	-	-	-	-	-	-	-	-	-	-	-	-
Sugar																	
CONSTANCE LA GAIETE	31-Dec	153.50	153.50	0.0	(1.0)	-	-	4.80	736.8	1.69%	-	4.50	-	2.9	117.07	-	1.31
MEDINE LTD (O)	30-Jun	68.50	68.50	0.0	0.7	4,700	321,950	86.94	5,955.4	13.67%	0.38	1.20	-	1.8	85.15	-	0.80
MEDINE LTD (P)	30-Jun	56.50	58.00	2.7	(6.1)	35,977	2,086,666	-	-	0.00%	-	1.20	-	2.1	-	-	-
UNION SUGAR ESTATE	31-Dec	51.75	50.00	(3.4)	(3.8)	200	10,000	18.90	945.0	2.17%	2.01	-	-	-	63.43	-	0.79
Transport																	
UNITED BUS SERVICE	30-Jun	35.15	35.15	0.0	(9.9)	-	-	4.97	174.7	0.40%	9.82	1.00	3.6	2.8	42.11	23.32	0.83
Total						1,531,354	23,160,424		43,571.5								

Code	Debentures	Nominal Value (Rs)	Price 16.05.2014	Price 23.05.2014	Volume Traded	Value Traded (Rs)	YTM on last traded price (%)	Accrued Interest	Redemption Date	Maturity Date
UTIN.B0401	United Investments Ltd - Bond	100.00	99.97	99.97	-	-	7.34	3.10	31-Jan-16	31-Jan-16