

21 Mar. 2014

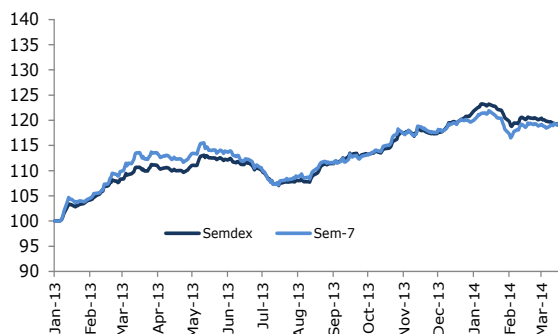
MARKET HIGHLIGHTS

INDICES	LATEST	W-O-W % CHANGE	YTD % CHANGE
LOCAL (Friday's closing)			
SEMDEX	2,062.46	(0.2)	(1.6)
SEM-7	402.19	(0.1)	(0.4)
DEMEX	179.00	(0.9)	3.0
REGIONAL (Thursday's closing)			
FTSE/JSE (SOUTH AFRICA)	46,508.27	(0.7)	0.5
NGSE (NIGERIA)	37,308.60	(3.1)	(9.7)
EGX 30 (EGYPT)	8,459.38	3.9	24.7
NSEASI (KENYA)	144.50	0.1	5.7
BGSMDC (BOTSWANA)	8,930.64	(1.3)	(1.4)
GGSECI (GHANA)	2,385.67	(0.4)	11.2
INTERNATIONAL (Thursday's closing)			
DOW JONES	16,331.05	1.4	(1.5)
CAC 40	4,327.91	1.8	0.7
SENSEX	21,832.86	0.3	3.1
DAX	9,277.05	2.9	(2.9)
NIKKEI	14,224.23	(0.7)	(12.7)
FTSE 100	6,542.44	(0.2)	(3.1)

	%
GDP growth (2014F) by CSO	3.7
UNEMPLOYMENT RATE	8.3
CPI HEADLINE INFLATION	3.9
BUDGET DEFICIT (% of GDP) - 2013	3.7
REPO RATE	4.65
BANK RATE	3.16
91 DAY T-BILLS	N/A
182 DAY T-BILLS	3.07
273 DAY T-BILLS	N/A
364 DAY T-BILLS	N/A
5-YEAR GOVT BONDS	5.83
10-YEAR GOVT BONDS	7.07

FOREX	LATEST	W-O-W % CHANGE	YTD % CHANGE
MUR/US\$	30.16	-0.2	-1.1
MUR/GBP	49.79	-1.2	1.0
MUR/INR	0.49	1.3	-12.4
MUR/JPY	29.26	-1.4	-17.4
MUR/ZAR	2.76	-3.0	-23.0
MUR/EURO	41.57	0.4	3.0

Rebased Indices Evolution

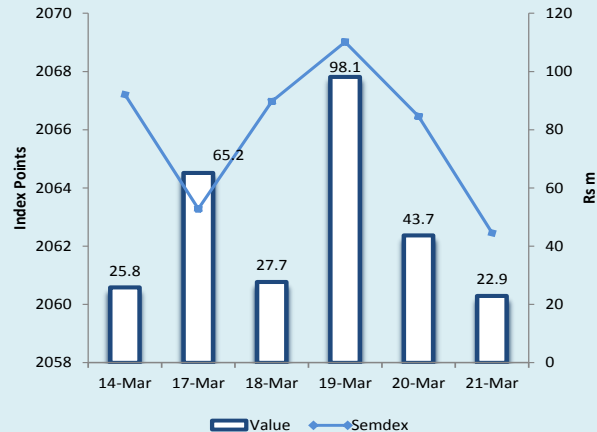


- ▶ **Banks: MCB +0.3%; SBM unch.; Bramer +0.6%**
- ▶ **Hotels: NMH -2.5%; Lux Island -0.7%; Sun Resorts -1.3%**
- ▶ SBM - Dividend announcement- Pg. 3
- ▶ Innodis reached an all-time high of Rs55.50

Anglo-Mauritius Stockbrokers (Research)

research@anglo.mu

	Wk/ending 14.03.2014	Wk/ending 21.03.2014
SECTORAL INDICES		
BANKING INDEX	3,322.43	3328.34
HOTEL INDEX	313.90	308.29
FOREIGN TRANSACTIONS (Rsm)		
TOTAL FOREIGN PURCHASES	33.97	40.63
TOTAL FOREIGN SALES	23.65	145.30
NET FOREIGN INFLOW/(OUTFLOW)	10.32	(104.67)
MARKET CAPITALISATION (Rsbn)		
OFFICIAL & DEM	266.22	265.30
DIVIDEND YIELD (%)		
OFFICIAL MARKET	2.58	2.94
PER(x)		
OFFICIAL MARKET	13.18	11.36



News

Shumba Coal- The date of admission of the secondary listing of 170,886,080 Ordinary Shares of no par Shumba Coal Limited on the Development & Enterprise Market of the SEM has been scheduled for 4 April 2014. Shumba Coal is a mineral exploration company currently building a portfolio of mining and exploration coal projects. The company's business is primarily focused on the identification of economically viable mineral prospects, the acquisition of such assets and the development of such prospects into full-scale mining projects. On the first day of trading, 1000 Ordinary shares of Shumba Coal Limited will be made available at an indicative price of USD 0.12 per share.

Official Market

The **Semdex** closed the week lower at 2,062.46 points (-0.2%) and the **Sem-7 index** lost 0.1% to reach 402.19 points. Overall **market turnover** amounted to Rs257.67m (US\$8.4m), where 54% of the total value traded was geared towards the banking duo MCB and SBM, as well as NMH. **Foreign investors** were net sellers to the tune of Rs104.67m.

MCB had its up and downs throughout the week where it reached a low of Rs214.50 on Tuesday to rebound back on the following days to even reach Rs216.00, but finally concluded at Rs215.75 (+0.3% w-o-w) today (VWAP for the week: Rs215.35). Foreign investors were net sellers on MCB to the tune of Rs4.7m. Additionally a total number of 4,050 of **MCB Notes** of value of Rs4.17m were exchanged. **State Bank** gained some upward momentum on Tuesday where it closed at Rs1.07, after announcing its interim dividend for FY2014 on Monday, but was heavily traded at Rs1.06(unch. w-o-w) throughout the whole week (VWAP: Rs1.06). Foreign investors were net sellers on SBM to the tune of Rs33.8m. **Bramer** gained 0.6%. On the insurance counter, the only mover was **MUA** which witnessed some upsides over the week to finally finish at Rs131.50 (+0.8%) today, with 72.4k shares traded overall of value of Rs9.5m (VWAP Rs130.75). Financial company **CFS** dropped further this week by 1.0% to Rs7.92 with 152.9k shares exchanged.

Innodis closed at an all-time high of Rs55.50 (+1.8%) on Wednesday, with 72.5k shares traded during the week. **IBL** ended the week unchanged at Rs110.00, with 51.9k shares exchanged. **Vivo Energy** fell further by 0.3% to Rs149.75 with 48.4k shares traded.

Construction companies picked up to some extent this week, whereby, **Gamma Civic** which even climbed up to Rs45.00 on Wednesday on 116.5k shares traded on that day, but lost some steam to conclude at Rs43.50 (+1.2% w-o-w) today. **UBP** gained 1.7% to settle at Rs88.00 with 28.9k shares exchanged. Furthermore, 7,000 **UBP bonds** of total value of Rs700.4k were traded. **PBL** stayed flat at Rs190.00 on 18.3k shares. **Moroil** lost 1.4% to reach Rs27.60, with 131k shares exchanged overall.

The investment counter accounted for 18% of this week's relatively high turnover. **Ciel Limited** yet again witnessed some weakness throughout the week, but recouped its losses to close unchanged at Rs6.50, where a total of 1m shares were traded (VWAP: Rs6.42). **Alteo** gained 0.6% to Rs34.20 with 98.5k shares traded. **Terra** weakened further by 1.3% to Rs37.80 with a significant volume of 199.9k shares exchanged over the week. On the other hand **ENL Land (O)** edged up to Rs49.60 (+0.2%) with 188.3k shares traded. The main movers on the investment counter were **ENL Commercial** (+5.7%), **NIT** (+4.5%), **FINCORP** (+1.9%), **PAD** (-1.8%) and **United Docks** (+1.4%).

ASL picked up this week, following the reporting of better earnings, where the stock jumped to Rs115.00 (+4.3%), with 12.7k shares traded. All hotel stocks ended the week yet again in red. Largest hotel group **NMH** fell by 2.5% to Rs78.00 with 246k shares traded throughout the week (VWAP: Rs78.58). Foreign investors were net sellers on the hotel stock to the tune of Rs11.3m. **Lux Island Resorts** lost 0.7% to Rs37.05 with 112.5k shares traded. **Sun Resorts** maintained its downward trend to finish at Rs38.00 (-1.3% w-o-w) with 83.9k shares exchanged overall, where the stock even reached Rs37.00 on Thursday.

Property companies pursued their downward trend with **BlueLife** and **Le Meritt** losing 8.4% and 8.1% respectively. The sugar company **Omnican** edged up to Rs87.50 (+0.6%) with 92.7k shares traded.

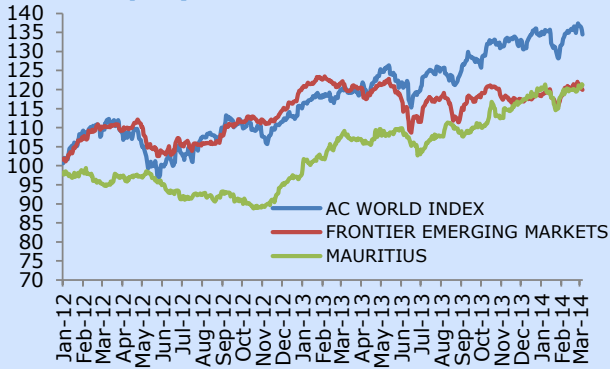
DEM Market

The **Demex** dropped by 0.9% to reach 179.00 points. Several crosses were witnessed where the Dem market turnover amounted to Rs27m. The industrials counter witnessed considerable exchanges this week. Crosses of 13.2k shares and 5.7k shares were respectively traded over **LMLC(O)** (+3.1% w-o-w) and **LMCL(P)** (+3.0% w-o-w) on Monday. **Sodia** (-11.1%) was the main loser on this counter, followed by **Les Gaz Industriels** (-6.7%). **Livestock Feed(O)** went up to Rs21.85 (+1.6%), with 50k shares exchanged overall. **Ciel Textile** climbed up to Rs30.00 (+1.0%) with notable volume of 93.2k shares exchanged this week. **ENL Investment** tumbled down to Rs49.50 (-6.6%) with 48.9k shares traded. 231.8k shares were traded over **ENL(P)** (+0.6%). 138.2k shares were exchanged over **EUDCOS(unch.)**. **FIDES** fell by 5.3% to Rs93.00. **UTIN** stayed flat at Rs10.00 with 129.5k shares traded. **Medine(O)** climbed up by 3.0% to reach Rs69.50 with 47.1k shares exchanged.

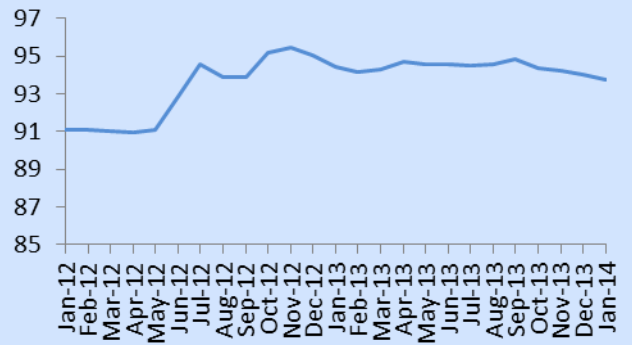
Dividend

Company	Financial Year	Amount Rs	Last cum date	Payment date
OFFICIAL				
State Bank	31-Dec-2013	0.02	10-Apr-2014	02-May-2014
State Bank	31-Dec-2014	0.011	10-Jun-2014	27-Jun-2014

World Equity – MSCI



Mauritius Exchange Rate

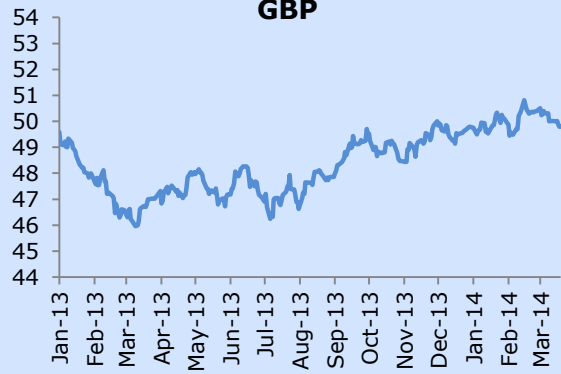


Forex

USD



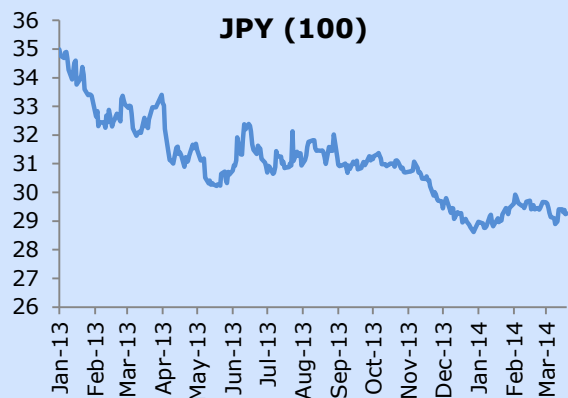
GBP



EUR



JPY (100)



Sector/Stock	Year-end	Price 14.03.2014	Price 21.03.2014	Change for the week(%)	Change since 31.12.13 (%)	Volume traded	Value traded	Shares in issue(m)	Market Cap (Rsm)	Weighted Market cap	EPS hist (Rs)	DPS hist (Rs)	PER hist (x)	Yield hist (%)	Latest NAV (Rs)	ROE (%)	Price/NAV Ratio
Banks, Insurance & Other Finance																	
BRAMER BANKING	31-Dec	7.10	7.14	0.6	(10.5)	45,500	323,100	901.29	6,435.2	2.88%	0.02	0.02	-	-	1.33	-	5.37
CIM FINANCIAL SERVICES	30-Sep	8.00	7.92	(1.0)	(2.7)	152,680	1,212,302	680.52	5,389.7	2.41%	0.73	0.22	10.8	2.78	3.36	21.73	2.36
NCB	30-Jun	215.00	215.75	0.3	2.7	323,932	69,759,305	250.38	54,018.5	24.17%	18.15	6.10	11.9	2.8	129.00	14.07	1.67
MEI	30-Jun	111.25	111.25	0.0	6.0	-	-	8.00	890.0	0.40%	14.56	3.50	7.6	3.1	85.53	17.02	1.30
MJA	31-Dec	130.50	131.50	0.8	6.9	72,424	9,469,722	20.04	2,635.3	1.18%	11.64	5.00	11.3	3.8	85.05	13.69	1.55
SBM	31-Dec	1.06	1.06	0.0	1.9	47,555,840	50,585,641	30,374.02	32,196.5	14.41%	0.10	0.04	10.5	3.3	0.64	15.84	1.66
SWAN	31-Dec	296.00	296.00	0.0	(6.0)	600	177,600	8.28	2,449.4	1.10%	20.45	10.90	14.5	3.7	205.38	9.96	1.44
Commerce																	
CMPL	31-Dec	27.00	27.00	0.0	0.0	-	-	2.19	59.2	0.03%	0.00	0.50	####	1.9	42.16	-	0.64
H MALLAC	31-Dec	126.00	120.00	(4.8)	11.1	200	24,600	11.26	1,351.1	0.60%	-	3.00	-	2.5	156.78	-	0.77
INNODIS	30-Jun	54.50	55.50	1.8	6.7	72,495	3,989,158	36.73	2,038.5	0.91%	4.43	1.80	12.5	3.2	51.27	8.64	1.08
IBL	30-Jun	110.00	110.00	0.0	7.8	51,188	5,612,092	71.44	7,858.2	3.52%	7.92	2.50	13.9	2.3	66.81	11.85	1.65
VIVO ENERGY	31-Dec	150.00	149.75	(0.2)	(1.5)	48,407	7,259,114	29.32	4,391.0	1.96%	6.17	2.00	24.3	1.3	16.94	36.42	-
Industry																	
GAMMA CIVIC	30-Jun	43.00	43.50	1.2	24.3	250,226	10,785,525	133.25	5,796.4	2.59%	0.78	0.90	55.6	2.1	14.94	5.23	2.91
GO LIFE INTERNATIONAL PCC	28-Feb	0.02	0.02	0.0	(50.0)	30	18	96.65	58.4	0.03%	0.00	-	10.0	-	0.11	-	-
PBL	30-Jun	190.00	190.00	0.0	(0.5)	18,275	3,472,250	16.45	3,124.9	1.40%	5.83	8.00	32.6	4.2	190.23	3.06	1.00
MCFI	30-Jun	23.35	23.00	(1.5)	(4.2)	359	8,201	22.01	506.1	0.23%	0.35	1.00	65.7	4.3	34.65	1.01	0.66
MOROIL	30-Jun	28.00	27.60	(1.4)	(1.4)	131,044	3,601,459	33.28	918.5	0.41%	1.40	1.40	19.7	5.1	11.78	11.88	2.34
MSM	30-Jun	Suspended	Suspended	0.0	0.0	-	-	46.88	-	0.00%	-	-	-	-	3.93	-	-
PIM	30-Jun	76.00	76.00	0.0	(1.3)	103	7,725	2.00	152.0	0.07%	4.74	3.25	16.0	4.3	55.94	8.47	1.36
UBP	30-Jun	86.50	88.00	1.7	(7.4)	28,896	2,487,451	26.51	2,332.9	1.04%	6.06	3.00	14.5	3.4	114.74	5.28	0.77
Investments																	
ALTEO LIMITED	30-Jun	34.00	34.20	0.6	(7.6)	98,515	3,354,269	318.49	10,892.4	4.87%	2.61	0.75	-	-	50.56	-	0.68
BMH	31-Dec	255.00	255.00	0.0	8.5	104	26,520	4.27	1,088.0	0.49%	36.48	8.00	7.0	3.1	399.77	9.13	0.64
CAUDAN	30-Jun	1.11	1.10	(0.9)	(2.7)	538,700	592,150	819.52	901.5	0.40%	0.05	0.04	22.0	3.6	3.54	-	0.31
CIEL LIMITED	30-Jun	6.50	6.50	0.0	1,024,663	6,574,100	1,231.35	8,003.8	3.58%	0.37	0.14	17.5	2.15	8.18	-	0.79	
ENL Commercial Ltd	30-Jun	22.00	23.25	5.7	3.3	7,600	168,650	29.17	678.3	0.30%	-	1.60	-	6.9	24.30	-	0.96
FINCORP	30-Jun	18.15	18.50	1.9	0.0	62,930	1,148,807	103.36	1,912.1	0.86%	0.27	0.30	68.5	1.6	35.86	-	0.52
MDIT	30-Jun	5.96	5.96	0.0	(0.7)	466,903	2,777,688	423.39	2,523.4	1.13%	0.84	0.31	-	5.2	4.32	-	1.38
NIT	30-Jun	42.10	44.00	4.5	3.0	43,288	1,830,233	13.70	602.9	0.27%	0.46	0.60	-	1.4	71.19	-	0.62
PAD	30-Jun	84.00	82.50	(1.8)	(0.6)	26,971	2,263,614	38.91	3,210.1	1.44%	-	1.50	-	1.8	192.89	-	0.43
POLICY	31-Dec	8.04	8.04	0.0	7.2	280,495	2,252,602	226.99	1,825.0	0.82%	0.44	0.40	18.3	5.0	5.52	7.97	1.46
ROCKCASTLE	31-Mar	1.35	1.35	0.0	3.8	-	-	-	-	-	-	-	-	0.01	-	1.13	-
ROGERS	30-Sep	205.00	206.00	0.5	3.5	25,930	5,320,205	25.20	5,192.1	2.32%	46.29	6.00	4.5	2.9	345.54	13.40	0.60
ENL LAND (O)	30-Jun	49.50	49.60	0.2	(1.8)	188,250	9,337,180	230.50	11,432.8	5.12%	5.90	1.22	8.4	2.5	68.00	8.68	0.73
ENL LAND (P)	30-Jun	45.50	45.00	(1.1)	0.0	9,608	436,627	-	-	-	-	2.80	-	6.2	-	-	-
TERRA	31-Dec	38.30	37.80	(1.3)	(3.1)	199,895	7,559,466	227.55	8,601.4	3.85%	2.20	0.80	17.2	2.1	72.36	3.04	0.52
UNITED DOCKS	30-Jun	69.00	70.00	1.4	(3.4)	37,720	2,602,787	10.56	739.2	0.33%	-	-	-	-	177.12	-	0.40
Leisure & Hotels																	
ASL	31-Dec	110.25	115.00	4.3	0.0	12,700	1,447,675	3.54	406.5	0.18%	6.50	10.00	17.7	8.7	18.08	35.96	6.36
NMH	30-Sep	80.00	78.00	(2.5)	(11.9)	245,961	19,326,997	161.42	12,591.0	5.63%	2.29	1.00	34.1	-	85.51	-	0.91
LUX ISLAND RESORTS	30-Jun	37.30	37.05	(0.7)	(5.7)	112,459	4,171,893	114.03	4,225.0	1.89%	0.91	-	40.7	-	32.72	-	1.13
SUN RESORTS	31-Dec	38.50	38.00	(1.3)	(8.7)	83,902	3,194,061	113.40	4,309.1	1.93%	0.18	-	211.1	-	45.00	0.40	0.84
Property Development																	
BlueLife Limited	31-Dec	9.50	8.70	(8.4)	-	86,942	813,569	425.3	3,700.1	0.19%	0.42	-	20.7	-	7.12	-	1.22
Le Meritt Holdings	30-Jun	6.20	5.70	(8.1)	(18.6)	3,100	18,170	75.87	432.5	0.19%	0.49	0.20	11.6	-	0.97	50.67	-
Sugar																	
OMNICANE	31-Dec	87.00	87.50	0.6	(1.7)	92,663	8,088,545	67.01	5,863.6	2.62%	5.86	2.75	14.9	3.1	113.54	5.16	112.14
Transport																	
AIR MAURITIUS	31-Mar	16.50	16.10	(2.4)	0.6	36,690	594,050	102.31	1,647.1	0.74%	-	-	-	-	33.32	-	0.48
Foreign																	
DALE CAPITAL GROUP LIMITED	28-Feb	3.50	3.50	0.0	(7.9)	-	-	25.78	90.2	0.04%	-	-	-	-	(0.05)	-	-
Funds/GBL Companies																	
Sanlam Africa Core Real Estate Fund Ltd (Class A Shares) USD	31-Dec	5.50	5.50	0.0	-	-	-	-	-	-	-	-	-	-	5.00	-	1.00
EXCHANGE TRADED FUND(ETF)																	
NewGold Issuer Limited		401.48	403.75	0.0	-	298	120,318	-	-	-	-	-	-	-	5.37	-	1.00
NewPlat Limited		434.25	434.25	0.0	-	-	-	-	-	-	-	-	-	-	5.37	-	2.00
Total						52,449,536	257,666,360		223,470.1								

Code	Debentures	Nominal Value (Rs)	Price 14.03.2014	Price 21.03.2014	Volume Traded	Value Traded (Rs)	YTM on last traded price (%)	Accrued Interest (Rs)	Redemption Date	Maturity Date
	The Mauritius Commercial Bank Ltd - Notes									
MCB.D2023		1,000.00	1,029.85	1,029.81	4,050.00	4,170,756	5.59	7.56	8-Aug-23	8-Aug-23
NRL.D0701	Lux Island Resorts Ltd - F / P - Convertible Bond	10.00	11.35	11.35	-	-	4.56	0.44	31-Dec-14	31-Dec-17
OMNI.D0501	Omicane Ltd - Notes	1,000,000.00	1,000,000.00	1,000,000.00	-	-	7.15	19,589.04	15-Aug-17	15-Aug-17
OMNI.D0301	Omicane Ltd - Notes (Second Issue)	100,000.00	100,522.13	100,522.13	-	-	5.80	1046.30	17-Jan-16	17-Jan-16
UBP.D0018	United Basalt Products - Bonds	100.00	100.04	100.05	7,000.00	700,350	5.84	1.36	31-Oct-18	31-Oct-18

Sector/Stock	Year-end	Price	Price	Change for the week(%)	Change since 31.12.13 (%)	Volume traded	Value Traded	Shares in issue(m)	Market Cap (Rsm)	Weighted Market cap	EPS hist (Rs)	DPS hist (Rs)	PER hist (x)	Yield hist (%)	Latest NAV (Rs)	ROE (%)	Price/NAV Ratio
		14.03.2014	21.03.2014														
Banks, Insurance & Other Finance																	
ANGLO MAURITIUS ASSURANCE	31-Dec	640.00	640.00	0.0	(1.5)	-	-	2.63	1,683.2	4.05%	35.17	30.40	18.2	4.8	-	-	-
Commerce																	
ABC MOTORS	30-Jun	102.75	102.75	0.0	(19.9)	-	-	6.18	634.5	1.53%	8.35	1.70	12.3	1.7	71.44	11.69	1.44
ASSOCIATED COMMERCIAL	30-Jun	171.25	171.25	0.0	5.1	-	-	1.14	195.6	0.47%	24.67	4.00	6.9	2.3	240.68	10.25	0.71
CHEMCO	31-Dec	21.50	21.50	0.0	(4.4)	100	2,150	6.21	133.5	0.32%	1.80	1.00	11.9	4.7	16.45	10.94	1.31
CIE IMMOBILIERE	31-Dec	489.00	489.00	0.0	0.0	-	-	0.27	130.1	0.31%	-	15.76	-	3.2	1,066.76	-	0.46
Information Communication & Technology																	
BHARAT TELECOM	31-Mar	64.00	51.50	(19.5)	0.0	100	5,150	-	-	0.00%	-	-	-	-	8.66	-	-
Industry																	
BYCHEMEX	31-Dec	10.60	10.70	0.9	0.0	3,700	39,240	5.00	53.5	0.13%	0.31	0.50	34.5	4.7	7.12	4.35	1.50
FORGES TARDIEU	31-Dec	170.00	167.75	(1.3)	(1.3)	3,900	654,225	1.92	322.1	0.78%	-	7.50	-	4.4	194.62	-	0.86
LES GAZ INDUSTRIELS	30-Jun	120.00	112.00	(6.7)	(16.4)	11,098	1,276,570	2.61	292.4	0.70%	16.55	2.40	6.8	2.0	92.19	17.95	1.21
LIVESTOCK FEED (O)	30-Jun	21.50	21.85	1.6	0.9	50,000	1,089,000	31.50	688.3	1.66%	3.48	0.90	6.3	4.2	38.61	9.01	0.57
LIVESTOCK FEED (P)	30-Jun	25.00	25.00	0.0	13.1	100	2,500	-	-	0.00%	-	1.20	-	4.8	-	-	-
LES MOULINS DE LA CONCORDE (O)	30-Jun	163.00	168.00	3.1	(1.2)	14,009	2,283,792	5.40	907.2	2.18%	11.95	7.00	14.1	4.3	238.76	5.01	0.70
LES MOULINS DE LA CONCORDE (P)	30-Jun	330.00	340.00	3.0	6.3	6,211	2,051,075	-	-	0.00%	-	20.00	-	6.1	-	-	-
MAURITIUS COSMETICS	31-Dec	53.00	53.00	0.0	(7.8)	400	21,000	4.50	238.5	0.57%	1.49	0.75	35.6	1.4	223.53	0.67	0.24
MARGARINE INDUSTRIES	31-Dec	923.00	923.00	0.0	0.0	-	-	0.30	276.9	0.67%	92.88	70.00	9.9	7.6	574.88	16.16	1.61
MAURITIUS SECONDARY INDUSTRIES	30-Jun	33.05	33.05	0.0	0.0	-	-	0.80	26.4	0.06%	6.12	1.00	-	3.0	63.12	-	0.52
PAPER CONVERTING	31-Dec	46.35	50.00	7.9	0.0	3,300	147,400	1.50	75.0	0.18%	-	0.75	-	1.6	171.24	-	0.29
QUALITY BEVERAGE	31-Dec	5.64	5.82	3.2	(27.1)	800	4,656	7.11	41.4	0.10%	-	0.50	-	8.9	38.44	-	0.15
SOAP & ALLIED INDUSTRIES	31-Dec	25.00	25.00	0.0	(21.3)	-	-	4.10	102.5	0.25%	1.34	-	18.7	-	60.50	2.21	0.41
SODIA	30-Jun	0.18	0.16	(11.1)	(5.9)	9,180	1,469	210.00	33.6	0.08%	-	-	-	-	0.11	-	1.45
VITAL WATER BOTTLING	31-Dec	51.00	51.25	0.5	0.5	200	10,250	2.20	112.5	0.27%	-	2.00	-	3.9	23.43	-	2.19
Investments																	
ALMA INVESTMENT	30-Jun	105.00	105.00	0.0	5.0	-	-	7.33	769.8	1.85%	5.20	5.60	-	5.3	240.85	-	0.44
ASCENCIA Ltd (Class A Shares)	30-Sep	1,500.00	1,500.00	0.0	7.1	-	-	1.42	2,130.0	5.13%	137.34	76.00	10.9	5.1	1,408.01	9.75	1.07
ASCENCIA Ltd (Class B Shares)	30-Sep	1,500.00	1,500.00	0.0	-	-	-	-	-	-	-	-	-	-	-	-	-
BLACK RIVER INVESTMENT	30-Jun	2,700.00	2,700.00	0.0	0.0	-	-	0.55	1,485.0	3.57%	56.16	85.50	-	3.2	5,065.29	-	0.53
ENL INVESTMENT LTD	30-Jun	53.00	49.50	(6.6)	(1.0)	48,870	2,394,730	86.29	4,271.3	10.28%	11.77	1.50	4.2	2.8	83.53	14.09	0.59
ENL LTD (P)	30-Jun	27.10	27.25	0.6	0.9	231,800	6,026,890	-	-	0.00%	-	0.26	-	1.0	-	-	-
EUDCOS	30-Jun	16.00	16.00	0.0	7.0	138,231	2,211,700	121.45	1,943.2	4.68%	1.07	0.65	15.0	4.1	11.72	9.13	1.37
FIDES	30-Jun	98.25	93.00	(5.3)	(8.4)	4,163	395,444	8.82	820.3	1.97%	16.86	3.50	5.5	3.6	168.23	26.12	0.55
MEDINE SHARE HOLDING (O)	30-Jun	2,460.00	2,460.00	0.0	15.5	-	-	0.60	1,485.8	3.58%	39.41	66.75	-	2.7	4,100.92	-	0.60
MEDINE SHARE HOLDING (P)	30-Jun	2,870.00	2,870.00	0.0	(4.0)	-	-	-	-	0.00%	-	66.75	-	2.3	-	-	-
PHOENIX INVESTMENT	30-Jun	120.75	121.00	0.2	(3.2)	273	32,960	5.69	687.9	1.66%	10.07	6.30	12.0	5.2	161.69	6.23	0.75
RHT HOLDING LTD	30-Jun	36.00	36.00	0.0	2.9	-	-	12.16	437.8	1.05%	-	1.00	-	2.8	53.25	-	0.68
UNITED INVESTMENT	30-Jun	10.00	10.00	0.0	(9.1)	129,475	1,294,753	151.46	1,514.6	3.64%	0.26	0.08	38.5	-	11.13	2.34	0.90
Leisure & Hotels																	
CONSTANCE HOTELS SERVICES	31-Dec	30.50	29.55	(3.1)	(20.1)	500	14,775	63.96	1,890.0	4.55%	-	-	-	-	41.68	-	0.71
MORNING LIGHT	30-Jun	42.00	42.00	0.0	0.0	-	-	45.96	1,930.4	4.65%	0.89	1.00	-	2.4	15.82	-	2.65
SOUTHERN CROSS TOURIST HOTEL	31-Dec	6.60	6.60	0.0	0.0	-	-	125.64	829.3	2.00%	0.36	0.20	18.3	3.0	3.03	11.88	2.18
TROPICAL PARADISE (O)	30-Jun	7.02	7.24	3.1	8.1	2,500	18,100	122.50	886.9	2.13%	-	0.06	-	-	11.68	-	0.62
TROPICAL PARADISE (P)	30-Jun	186.00	186.00	0.0	0.0	-	-	-	-	0.00%	-	16.00	-	8.6	-	-	-
Others																	
CARGOHUB CAPITALI Ltd - (Eur)	31-Dec	30.00	30.00	0.0	0.0	-	-	1.13	-	0.00%	3.01	0.00	10.0	-	13.73	21.92	2.18
COVIFRA	31-Oct	7.94	7.94	0.0	(14.1)	-	-	56.61	449.5	1.08%	1.42	-	5.6	-	37.21	3.82	0.21
CIEL TEXTILE LTD	30-Jun	29.70	30.00	1.0	18.6	93,205	2,777,494	101.81	3,054.2	7.35%	4.50	1.00	6.7	3.4	32.52	13.84	0.92
HOTELEST	31-Dec	29.00	28.00	(3.4)	(11.1)	1,800	50,530	32.62	913.4	2.20%	-	-	-	-	41.48	-	0.68
MEDICAL & SURGICAL CENTRE	31-Mar	1.70	1.70	0.0	1.2	1,000	1,700	569.94	968.9	2.33%	0.05	0.02	34.0	0.3	0.93	5.38	1.83
MAURITIUS FREEPORT DEVELOPMENT	31-Dec	7.78	7.78	0.0	11.1	17,400	135,372	150.00	1,167.0	2.81%	0.07	-	111.1	-	6.37	1.10	1.22
SIT LAND HOLDINGS OPT	30-Jun	18,000.00	17,000.00	(5.6)	(5.6)	3	51,020	-	-	-	-	-	-	-	-	-	-
Sugar																	
CONSTANCE LA GAJETE	31-Dec	161.50	161.50	0.0	4.2	50	8,075	4.80	775.2	1.87%	3.34	4.50	48.4	2.8	138.85	2.41	1.16
MEDINE LTD (O)	30-Jun	67.50	69.50	3.0	2.2	47,100	3,180,825	86.94	6,042.3	14.54%	0.33	1.00	-	1.4	85.15	-	0.82
MEDINE LTD (P)	30-Jun	60.00	60.00	0.0	(2.8)	13,900	834,000	-	-	0.00%	-	1.00	-	1.7	-	-	-
UNION SUGAR ESTATE	31-Dec	51.75	51.75	0.0	(0.5)	-	-	18.90	978.1	2.35%	1.43	-	-	-	61.05	-	0.85
Transport																	
UNITED BUS SERVICE	30-Jun	35.90	35.90	0.0	(7.9)	-	-	4.97	178.4	0.43%	6.62	1.00	5.4	2.8	41.33	16.02	0.87
Total						833,368	27,016,844		41,556.3								

Code	Debentures	Nominal Value (Rs)	Price 14.03.2014	Price 21.03.2014	Volume Traded	Value Traded (Rs)	YTM on last traded price (%)	Accrued Interest	Redemption Date	Maturity Date
UTIN.B0401	United Investments Ltd - Bond	100.00	101.59	101.59	-	-	6.56	1.78	31-Jan-16	31-Jan-16