

18 Apr.2014

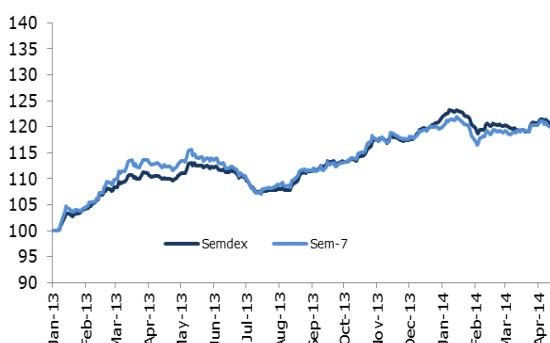
MARKET HIGHLIGHTS

INDICES	LATEST	W-O-W % CHANGE	YTD % CHANGE
LOCAL (Friday's closing)			
SEMDEX	2,084.57	(0.5)	(0.5)
SEM-7	405.08	(0.2)	0.4
DEMEX	177.47	(0.4)	2.1
REGIONAL (Thursday's closing)			
FTSE/JSE (SOUTH AFRICA)	48,139.69	(0.8)	4.1
NGSE (NIGERIA)	39,298.97	0.8	(4.9)
EGX 30 (EGYPT)	8,080.48	2.3	19.1
NSEASI (KENYA)	147.37	2.1	7.8
BGSMDC (BOTSWANA)	8,993.32	(0.0)	(0.7)
GGSECI (GHANA)	2,337.00	-	8.9
INTERNATIONAL (Thursday's closing)			
DOW JONES	16,424.85	1.6	(0.9)
CAC 40	4,405.66	(0.2)	2.6
SENSEX	22,277.23	(1.9)	5.2
DAX	9,317.82	(1.4)	(2.5)
NIKKEI	14,417.53	3.3	(11.5)
FTSE 100	6,584.17	(0.9)	(2.4)

	%
GDP growth (2014F) by CSO	3.7
UNEMPLOYMENT RATE	8.3
CPI HEADLINE INFLATION	4.0
BUDGET DEFICIT (% of GDP) - 2013	3.7
REPO RATE	4.65
BANK RATE	2.99
91 DAY T-BILLS	N/A
182 DAY T-BILLS	N/A
273 DAY T-BILLS	N/A
364 DAY T-BILLS	3.07
5-YEAR GOVT BONDS	5.83
10-YEAR GOVT BONDS	7.07

FOREX	LATEST	W-O-W % CHANGE	YTD % CHANGE
MUR/US\$	30.16	0.0	-1.1
MUR/GBP	50.64	0.1	2.7
MUR/INR	0.49	0.0	-11.8
MUR/JPY	29.25	-0.8	-17.5
MUR/ZAR	2.86	0.0	-20.1
MUR/EURO	41.66	-0.6	3.3

Rebased Indices Evolution



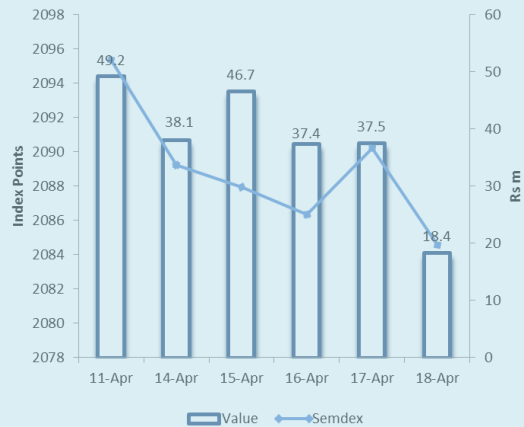
Highlights

- ▶ **Banks: MCB Group +0.5%; SBM -1.0%; Bramer +1.4%**
- ▶ **Hotels: NMH -2.2%; Lux Island +0.7%; Sun Resorts +0.5%**
- ▶ **Company News: MEI, LUX, Atlantic Leaf**
- ▶ **Listing and Offer for Sale of Lottotech**

Anglo-Mauritius Stockbrokers (Research)

research@anglo.mu

	Wk/ending 11.04.2014	Wk/ending 18.04.2014
SECTORAL INDICES		
BANKING INDEX	3,310.40	3,304.05
HOTEL INDEX	341.6811	337.97
FOREIGN TRANSACTIONS (Rsm)		
TOTAL FOREIGN PURCHASES	105.62	71.13
TOTAL FOREIGN SALES	140.18	75.47
NET FOREIGN INFLOW/(OUTFLOW)	(34.55)	(4.34)
MARKET CAPITALISATION (Rsbm)		
OFFICIAL & DEM	269.27	267.91
DIVIDEND YIELD (%)		
OFFICIAL MARKET	2.88	2.90
PER(x)		
OFFICIAL MARKET	11.99	11.92



News

Lottotech – Approval of offer for sale of up to 85,000,000 Ordinary Shares of no par value of Lottotech Ltd and listing of 340,000,000 ordinary shares of no par value on the Official List of the Stock Exchange of Mauritius.

MEI – The Board announced that the Managing Director of the Company, Mr. Andre Chung Shui, has submitted his resignation and will be replaced by Mr. Derek Wong Wan Po.

LUX Island Resorts - The Board directors of LUX announced that it has entered into negotiations with a potential buyer for the eventual sale of Hotel Le Recif in Reunion Island.

Atlantic Leaf Properties - The Board of Directors of Atlantic Leaf wishes to inform shareholders and the public in general that the company has identified an opportunity to invest indirectly in fixed property assets, through the proposed acquisition of the entire issued share capital of Seahawk Investments Limited.

Official Market

Both the **Semdex** and **SEM-7** indices maintained their downward trend during the week, losing 0.5% and 0.2% respectively. **Market turnover** amounted to Rs178.1m (US\$ 5.9m). **Foreign investors** were net sellers yet again to the tune of Rs4.3m.

MCBG was highly traded throughout the week, accounting for 32.5% of market turnover, where it even reached a high of Rs216.75, but concluded the week at Rs216.00 (+0.5%). **State Bank** fell by 1.0% to Rs 1.03 on 35.6m shares. **Bramer Banking** lost 1.4% to Rs7.20, with 43.2k shares traded. **MUA** was the only mover among insurance companies and declined by 0.4% to Rs134.00. Notable volume of 1.5m shares were exchanged on **CFS** yet again this week, despite the stock trading ex-div since Tuesday. CFS lost 0.5% week-on-week to Rs7.92.

Among the commercial stocks, **ENL Commercial and IBL** were the only gainers, up by 0.9% and 0.5% respectively. **Vivo Energy** was the sole decliner, losing 0.5% to Rs149.00.

Construction company **Gamma Civic** stumbled by 5.1% to Rs 45.00 despite announcing the listing of its subsidiary Lottotech on the Official List of the SEM whereby 85m shares will be on offer for sale. **UBP** was on the downside as well to reach Rs88.50 (-1.7%) on volume of 49.7k shares. UBP bonds saw 30k crossed at Rs100.52 today. **MCFI** lost 2.2% to Rs22.50 on notable volume of 151.2k shares, out of which 150k shares were crossed today. Only gainer among industrials was **MOROIL** which gained 0.5% to Rs28.00.

ENL Land (P) was the weakest performer on the investment counter where it fell by 5.1% to Rs44.15 with 7.1k shares exchanged. **ENL Land (O)** went down to Rs50.00 (-1.0%) with 17.7k shares traded. **Alteo** (+1.4%) and **Terra** (+0.3%) were the only gainers in the investment sector. Other decliners included **BMH** (-0.4%), **CIEL** (-1.8%), **MDIT** (-1.4%) and **PAD** (-0.3%). **Rogers** closed the week unchanged with 8.5k shares exchanged.

Investors had mixed feeling on hotels this week. The largest hotel group **NMH** gave up part of last week's gains to close at Rs 87.00 (-2.2%). **Sun Resorts** and **Lux Island Resorts** closed the week in positive territory, up by 0.5% and 0.7% respectively. National airline company **Air Mauritius**, shed off 5.9% to Rs15.95 on 51.9k shares exchanged. **ASL** maintained its positive, gaining 1.8% to Rs 115.00 on 2.8k shares.

Property companies **Le Meritt and Bluelife** were both on the downside, losing 0.6% and 3.4% respectively.

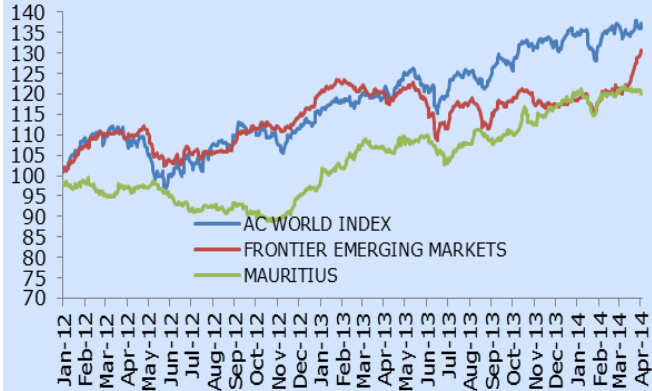
DEM Market

The **Demex** lost 0.4% to finish at 177.47 points. Over 47% of the Dem's Rs7.7m turnover for the week was occupied by **Ciel Textile** which lost 1.0% to close at Rs29.30. Main losers were LFL (P) (-17.3%), UTIN (-7.7%) and BTEL (-6.3%). On the other hand the top gainers for the week were **QBL** (+6.0%), **SIT Land Holdings** (+3.0%) and **ENIT** (+1.0%).

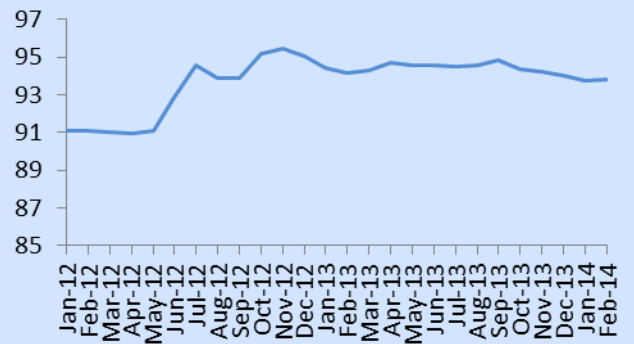
Dividend

Company	Financial Year	Amount Rs	Last cum date	Payment date
OFFICIAL				
State Bank	31-Dec-2014	0.011	10-Jun-2014	27-Jun-2014
Gamma Civic	31-Dec-2013	0.72	28-May-2014	30-Jun-2014

World Equity – MSCI



Mauritius Exchange Rate



Forex

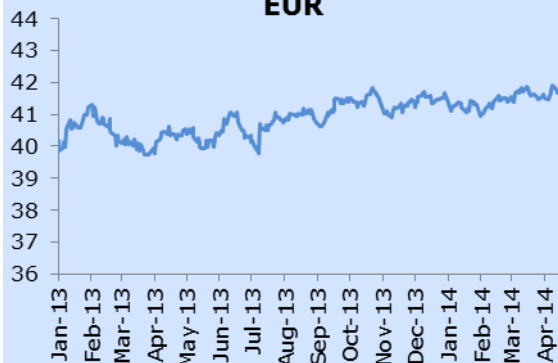
USD



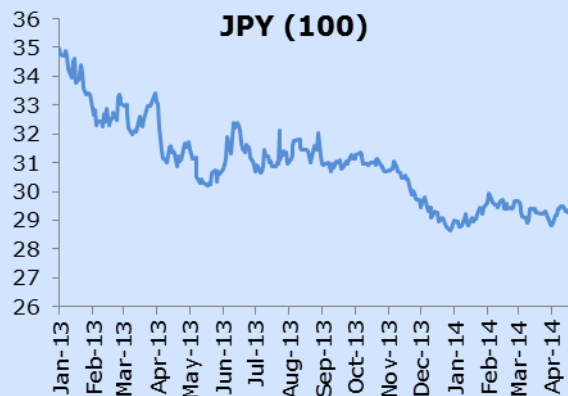
GBP



EUR



JPY (100)



Sector/Stock	Year-end	Price 11.04.2014	Price 18.04.2014	Change for the week(%)	Change since 31.12.13 (%)	Volume traded	Value traded	Shares in issue(m)	Market Cap (Rsm)	Weighted Market cap	EPS hist (Rs)	DPS hist (Rs)	PER hist (x)	Yield hist (%)	Latest NAV (Rs)	ROE (%)	Price/NAV Ratio
Banks, Insurance & Other Finance																	
BRAMER BANKING	31-Dec	7.30	7.20	(1.4)	(9.8)	43,200	313,552	901.29	6,489.3	2.91%	0.10	0.02	72.00	0.3	1.40	-	5.14
CIM FINANCIAL SERVICES	30-Sep	7.96	7.92	(0.5)	(2.7)	1,473,211	11,673,549	680.52	5,389.7	2.42%	0.73	0.22	10.8	2.78	3.36	21.73	2.36
MCB Group	30-Jun	215.00	216.00	0.5	2.9	268,891	57,909,028	237.98	51,403.0	23.04%	18.15	6.10	11.9	2.82	123.76	14.67	1.75
MEI	30-Jun	112.25	112.25	0.0	6.9	16,202	1,818,751	8.00	898.0	0.40%	14.56	3.50	7.7	3.1	85.53	17.02	1.31
MUA	31-Dec	134.50	134.00	(0.4)	8.9	28,772	3,858,010	20.04	2,685.4	1.20%	12.95	5.00	10.3	3.7	85.95	15.07	1.56
SBM	31-Dec	1.04	1.03	(1.0)	(1.0)	35,587,312	36,656,458	30,374.02	31,285.2	14.02%	0.12	0.06	8.7	5.8	0.75	15.85	1.38
SWAN	31-Dec	296.00	296.00	0.0	(6.0)	100	29,600	8.28	2,449.4	1.10%	27.13	10.90	10.9	3.7	199.40	13.61	1.48
Commerce																	
CMPL	31-Dec	27.00	27.00	0.0	0.0	-	-	2.19	59.2	0.03%	0.15	0.50	180.0	1.9	54.84	-	0.49
ENL COMMERCIAL	30-Jun	22.60	22.80	0.9	1.3	7,200	162,760	29.17	665.1	0.30%	-	1.60	-	7.0	24.30	-	0.94
H MALLAC	31-Dec	119.00	119.00	0.0	10.2	100	11,900	11.26	1,339.9	0.60%	-	3.00	-	2.5	149.42	-	0.80
INNODIS	30-Jun	55.50	55.50	0.0	6.7	117	6,468	36.73	2,038.5	0.91%	4.43	1.80	12.5	3.2	51.27	8.64	1.08
IBL	30-Jun	106.00	106.50	0.5	4.4	2,912	309,908	71.44	7,608.2	3.41%	7.92	2.50	13.4	2.3	66.81	11.85	1.59
VIVO ENERGY	31-Dec	149.75	149.00	(0.5)	(2.0)	601	89,699	29.32	4,369.0	1.96%	7.59	1.00	19.6	0.7	16.30	46.56	-
Industry																	
GAMMA CIVIC	31-Dec	47.40	45.00	(5.1)	28.6	47,077	2,155,911	133.25	5,996.3	2.69%	0.78	0.90	57.5	2.0	14.94	5.23	3.01
GO LIFE INTERNATIONAL PCC	28-Feb	0.03	0.03	0.0	(25.0)	2,000	1,807	96.65	58.2	0.03%	0.00	-	10.0	-	0.11	-	-
PBL	30-Jun	190.00	190.00	0.0	(0.5)	5,570	1,058,300	16.45	3,124.9	1.40%	5.83	8.00	32.6	4.2	190.23	3.06	1.00
MCFI	30-Jun	23.00	22.50	(2.2)	(6.3)	151,195	3,402,435	22.01	495.1	0.22%	0.55	1.00	40.9	4.4	34.48	1.60	0.65
MOROIL	30-Jun	27.85	28.00	0.5	0.0	7,712	215,926	33.28	931.8	0.42%	1.40	1.40	20.0	5.0	11.78	11.88	2.38
MSM	30-Jun	Suspended	Suspended	0.0	0.0	-	-	46.88	-	0.00%	-	-	-	-	3.93	-	-
PIM	30-Jun	77.00	77.00	0.0	0.0	801	61,677	2.00	154.0	0.07%	4.74	3.25	16.2	4.2	55.94	8.47	1.38
UBP	30-Jun	90.00	88.50	(1.7)	(6.8)	49,705	4,402,945	26.51	2,346.1	1.05%	6.06	3.00	14.6	3.4	114.74	5.28	0.77
Investments																	
ALTANTIC LEAF PROPERTIES - (GBP)	28-Feb	1.00	1.00	0.0	-	-	-	-	-	-	-	-	-	-	-	-	-
ALTEO LIMITED	30-Jun	35.50	36.00	1.4	(2.7)	89,351	3,194,063	318.49	11,465.7	5.14%	2.61	0.75	-	-	50.56	-	0.71
BMH	31-Dec	265.00	264.00	(0.4)	(0.9)	12.3	306,882	4.27	1,126.4	0.50%	10.36	8.00	25.5	3.0	427.78	2.42	0.62
CAUDAN	30-Jun	1.12	1.12	0.0	(0.9)	34,000	38,080	819.52	917.9	0.41%	0.05	0.04	22.4	3.6	3.54	-	0.32
CIEL LIMITED	30-Jun	6.84	6.72	(1.8)	(1.8)	1,322,781	9,015,259	1,231.35	8,274.7	3.71%	0.37	0.14	18.1	2.08	8.18	-	0.82
FINCORP	30-Jun	19.00	19.00	0.0	2.7	30,020	570,368	103.36	1,963.8	0.88%	0.27	0.30	70.4	1.6	35.86	-	0.53
MDIT	30-Jun	5.88	5.80	(1.4)	(3.3)	209,633	1,220,939	423.39	2,455.6	1.10%	0.84	0.31	-	5.3	4.32	-	1.34
NIT	30-Jun	49.00	49.00	0.0	14.8	1,822	89,278	13.70	671.4	0.30%	0.46	0.60	-	1.2	71.19	-	0.69
PAD	30-Jun	86.00	85.75	(0.3)	3.3	5,933	508,755	38.91	3,336.5	1.50%	-	1.50	-	1.7	192.89	-	0.44
POLICY	31-Dec	8.20	8.20	0.0	9.3	31,906	261,235	226.99	1,861.3	0.83%	0.52	0.40	15.8	4.9	5.78	9.00	1.42
ROCKCASTLE	31-Mar	1.35	1.35	0.0	3.8	-	-	-	-	-	-	0.01	-	-	1.13	-	1.19
ROGERS	30-Sep	203.50	203.50	0.0	2.3	8,495	1,736,209	25.20	5,129.1	2.30%	69.46	6.00	2.9	2.9	345.54	20.10	0.59
ENL LAND (O)	30-Jun	50.50	50.00	(1.0)	(1.0)	17,706	885,753	230.50	11,525.1	5.17%	5.90	1.22	8.5	2.4	68.00	8.68	0.74
ENL LAND (P)	30-Jun	46.50	44.15	(5.1)	(1.9)	7,125	327,305	-	-	-	-	2.80	-	6.3	-	-	-
TERRA	31-Dec	37.50	37.60	0.3	(3.6)	204,145	7,670,356	227.55	8,555.9	3.83%	1.60	0.80	23.5	2.1	72.35	2.21	0.52
UNITED DOCKS	30-Jun	70.00	70.00	0.0	(3.4)	-	-	10.56	739.2	0.33%	-	-	-	-	177.12	-	0.40
Leisure & Hotels																	
ASL	31-Dec	113.00	115.00	1.8	0.0	2,857	323,466	3.54	406.5	0.18%	11.60	10.00	9.9	8.7	11.23	103.29	10.24
NMH	30-Sep	89.00	87.00	(2.2)	(1.7)	66,707	5,882,021	161.42	14,043.8	6.29%	2.29	1.00	38.0	-	85.51	-	1.02
LUX ISLAND RESORTS	30-Jun	40.00	40.30	0.7	2.5	152,973	6,147,608	114.03	4,595.6	2.06%	0.91	-	44.3	-	32.72	-	1.23
SUN RESORTS	31-Dec	40.00	40.20	0.5	(3.4)	45,861	1,854,946	113.40	4,558.6	2.04%	-	-	-	-	57.35	-	0.70
Property Development																	
BlueLife Limited	31-Dec	8.80	8.50	(3.4)	-	45,484	386,654	425.3	3,615.1	0.19%	4.27	-	2.0	-	8.84	-	0.96
Le Meritt Holdings	30-Jun	6.48	6.44	(0.6)	(8.0)	200	1,288	75.87	488.6	0.22%	0.49	0.20	13.1	-	0.97	50.67	-
Sugar																	
OMNICANE	31-Dec	88.00	88.00	0.0	(1.1)	11,419	1,004,891	67.01	5,897.1	2.64%	6.24	2.75	14.1	3.1	132.19	4.72	112.14
Transport																	
AIR MAURITIUS	31-Mar	16.95	15.95	(5.9)	(0.3)	51,940	836,537	102.31	1,631.8	0.73%	-	-	-	-	33.32	-	0.48
Foreign																	
DALE CAPITAL GROUP LIMITED	28-Feb	3.50	3.50	0.0	(7.9)	-	-	25.78	90.2	0.04%	-	-	-	-	(0.05)	-	-
Funds / GBL Companies																	
Sanlam Africa Core Real Estate Fund Ltd (Class A Shares) USD	31-Dec	5.60	5.60	0.0	-	47,000	7,922,583	-	-	-	0.75	0.13	7.5	2.3	5.75	13.04	1.00
EXCHANGE TRADED FUND(ETF)																	
NewGold Issuer Limited		403.75	403.75	0.0	-	-	-	-	-	-	-	-	-	-	-	-	1.00
NewPlat Limited		434.25	434.25	0.0	-	-	-	-	-	-	-	-	-	-	-	-	2.00
Total						40,130,236	178,115,828		223,136.4								

Code	Debentures	Nominal Value (Rs)	Price 11.04.2014	Price 18.04.2014	Volume Traded	Value Traded (Rs)	YTM on last traded price (%)	Accrued Interest (Rs)	Redemption Date	Maturity Date
MCB.D2023	The Mauritius Commercial Bank Ltd - Notes	1,000.00	1,029.77	1,031.96	550.00	567,583	5.59	11.01	8-Aug-23	8-Aug-23
NRL.D0701	Lux Island Resorts Ltd - F / P - Convertible Bond	10.00	11.25	11.30	18,488.00	209,484	4.72	0.04	31-Dec-17	31-Dec-17
OMNI.D0501	Omnican Ltd - Notes	1,000,000.00	1,000,000.00	1,000,000.00	-	-	7.15	23,702.74	15-Aug-17	15-Aug-17
OMNI.D0301	Omnican Ltd - Notes (Second Issue)	100,000.00	100,522.13	100,522.13	-	-	5.50	1374.25	17-Jan-16	17-Jan-16
SBMD2024	State Bank of Mauritius Ltd - Bond - Intro - 25.03.14	10,000.00	10,045.78	10,045.78	-	-	5.94	60.00	10-Mar-24	10-Mar-24
UBPD0018	United Basalt Products - Bonds	100.00	100.53	100.52	30,000.00	3,015,600	5.72	0.26	31-Oct-18	31-Oct-18

Sector/Stock	Year-end	Price 11.04.2014	Price 18.04.2014	Change for the week(%)	Change since 31.12.13 (%)	Volume traded	Value traded	Shares in issue(m)	Market Cap (Rsm)	Weighted Market cap	EPS hist (Rs)	DPS hist (Rs)	PER hist (x)	Yield hist (%)	Latest NAV (Rs)	ROE (%)	Price/NAV Ratio
Banks, Insurance & Other Finance																	
ANGLO MAURITIUS ASSURANCE	31-Dec	700.00	700.00	0.0	7.7	111	77,700	2.63	1,841.0	4.21%	34.16	41.80	20.5	6.0	-	-	-
Commerce																	
ABC MOTORS	30-Jun	102.75	102.75	0.0	(19.9)	-	-	6.18	634.5	1.45%	8.35	1.70	12.3	1.7	71.44	11.69	1.44
ASSOCIATED COMMERCIAL	30-Jun	171.25	171.25	0.0	5.1	-	-	1.14	195.6	0.45%	24.67	4.00	6.9	2.3	240.68	10.25	0.71
CHEMCO	31-Dec	21.50	21.50	0.0	(4.4)	-	-	6.21	133.5	0.31%	1.26	1.00	17.1	4.7	16.07	7.84	1.34
CIE IMMOBILIERE	31-Dec	489.00	489.00	0.0	0.0	-	-	0.27	130.1	0.30%	25.50	17.00	-	3.5	1,056.19	-	0.46
Information Communication & Technology																	
BHARAT TELECOM	31-Mar	48.00	45.00	(6.3)	(29.7)	100	4,500	19.14	861.3	1.97%	-	-	-	-	8.66	-	-
Industry																	
BYCHEMEX	31-Dec	10.70	10.50	(1.9)	(1.9)	300	3,150	5.00	52.5	0.12%	0.27	0.60	38.9	5.6	6.60	4.09	1.59
FORGES TARDIEU	31-Dec	167.75	167.75	0.0	(1.3)	-	-	1.92	322.1	0.74%	-	7.50	-	4.5	194.62	-	0.86
LES GAZ INDUSTRIELS	30-Jun	110.00	110.00	0.0	(17.9)	-	-	2.61	287.2	0.66%	3.06	3.00	35.9	2.7	88.20	3.47	1.25
LIVESTOCK FEED (O)	30-Jun	22.10	22.00	(0.5)	1.6	10,775	237,625	31.50	693.0	1.58%	1.96	0.90	11.2	4.1	37.34	5.25	0.59
LIVESTOCK FEED (P)	30-Jun	25.40	21.00	(17.3)	(5.0)	740	15,790	-	-	0.00%	-	1.20	-	4.7	-	-	-
LES MOULINS DE LA CONCORDE (O)	30-Jun	159.00	159.00	0.0	(6.5)	-	-	5.40	858.6	1.96%	14.85	8.00	10.7	5.0	238.76	6.22	0.67
LES MOULINS DE LA CONCORDE (P)	30-Jun	326.00	326.00	0.0	1.9	-	-	-	-	0.00%	-	20.00	-	6.1	-	-	-
MAURITIUS COSMETICS	31-Dec	53.00	53.00	0.0	(7.8)	1,069	56,525	4.50	238.5	0.55%	21.65	0.60	2.4	1.1	237.68	9.11	0.22
MARGARINE INDUSTRIES	31-Dec	923.00	923.00	0.0	0.0	-	-	0.30	276.9	0.63%	78.74	60.00	11.7	6.5	615.85	12.79	1.50
MAURITIUS SECONDARY INDUSTRIES	30-Jun	33.05	33.15	0.3	0.3	382	12,663	0.80	26.5	0.06%	8.69	1.20	3.8	3.6	63.12	13.77	0.53
PAPER CONVERTING	31-Dec	50.00	50.00	0.0	0.0	-	-	1.50	75.0	0.17%	13.97	0.60	3.6	1.2	175.07	7.98	0.29
QUALITY BEVERAGE	31-Dec	5.66	6.00	6.0	(24.8)	200	1,200	7.11	42.7	0.10%	-	-	-	-	46.54	-	0.13
SOAP & ALLIED INDUSTRIES	31-Dec	25.00	24.25	(3.0)	(23.6)	1,200	29,100	4.10	99.4	0.23%	0.71	-	34.0	-	58.55	1.22	0.41
SODIA	30-Jun	0.16	0.16	0.0	(5.9)	12,060	1,929	210.00	33.6	0.08%	-	-	-	-	0.11	-	1.45
VITAL WATER BOTTLING	31-Dec	51.75	51.75	0.0	1.5	-	-	2.20	113.6	0.26%	4.08	3.00	-	5.8	22.36	-	2.31
Investments																	
ALMA INVESTMENT	30-Jun	105.00	105.00	0.0	5.0	-	-	7.33	769.8	1.76%	3.16	5.55	-	5.3	240.85	-	0.44
ASCENCIA Ltd (Class A Shares)	30-Sep	1,500.00	1,500.00	0.0	7.1	-	-	1.42	2,130.0	4.87%	54.39	36.65	27.6	2.4	1,408.01	3.86	1.07
ASCENCIA Ltd (Class B Shares)	30-Sep	1,500.00	1,500.00	0.0	0.0	-	-	1.0	1,572.0	-	-	-	-	-	-	-	-
BLACK RIVER INVESTMENT	30-Jun	2,700.00	2,700.00	0.0	0.0	-	-	0.55	1,485.0	3.39%	27.16	96.50	-	3.6	5,065.29	-	0.53
ENL INVESTMENT LTD	30-Jun	48.50	49.00	1.0	(2.0)	11,940	583,164	86.29	4,228.2	9.66%	18.00	1.50	2.7	3.1	83.53	21.55	0.59
ENL LTD (P)	30-Jun	26.00	26.20	0.8	(3.0)	18,424	482,756	-	-	0.00%	-	0.26	-	1.0	-	-	-
EUDCOS	30-Jun	16.10	16.10	0.0	7.7	61,428	988,986	121.45	1,955.4	4.47%	0.94	0.68	17.1	4.2	11.72	8.02	1.37
FIDES	30-Jun	92.50	92.50	0.0	(8.9)	-	-	8.82	815.9	1.86%	16.17	2.00	5.7	2.2	168.23	26.12	0.55
MEDINE SHARE HOLDING (O)	30-Jun	2,460.00	2,460.00	0.0	15.5	-	-	0.60	1,485.8	3.40%	19.68	76.40	-	3.1	4,100.92	-	0.60
MEDINE SHARE HOLDING (P)	30-Jun	2,870.00	2,870.00	0.0	(4.0)	-	-	-	-	0.00%	-	76.40	-	2.7	-	-	-
PHOENIX INVESTMENT	30-Jun	121.00	121.00	0.0	(3.2)	3,276	395,620	5.69	687.9	1.57%	4.80	6.74	25.2	5.6	161.69	2.97	0.75
RHT HOLDING LTD	30-Jun	36.00	36.00	0.0	2.9	-	-	12.16	437.8	1.00%	4.46	0.45	-	1.3	53.25	-	0.68
UNITED INVESTMENT	30-Jun	11.00	10.15	(7.7)	(7.7)	5,000	50,750	151.46	1,537.3	3.51%	1.87	0.08	5.4	-	11.13	16.80	0.91
Leisure & Hotels																	
CONSTANCE HOTELS SERVICES	31-Dec	27.50	27.00	(1.8)	(27.0)	3,800	104,150	63.96	1,726.9	3.95%	-	-	-	-	44.65	-	0.60
MORNING LIGHT	31-Dec	42.00	42.00	0.0	0.0	-	-	45.96	1,930.4	4.41%	0.38	0.20	-	0.5	23.50	-	1.79
SOUTHERN CROSS TOURIST HOTEL	31-Dec	6.26	6.26	0.0	(5.2)	14,000	87,640	125.64	786.5	1.80%	0.27	0.20	23.2	3.2	3.03	8.91	2.07
TROPICAL PARADISE (O)	30-Jun	7.26	7.26	0.0	8.4	-	-	122.50	889.4	2.03%	0.08	0.00	-	-	11.68	-	0.62
TROPICAL PARADISE (P)	30-Jun	182.00	182.00	0.0	(2.2)	-	-	-	-	0.00%	-	8.00	-	4.4	-	-	-
Mineral & Exploration																	
SHUMBA COAL -(USD)	31-Dec	0.12	0.12	-	-	-	-	170.89	20.5	0.05%	-	-	-	-	0.02	-	7.06
Others																	
CARGOHUB CAPITALI Ltd - (Eur)	31-Dec	30.00	30.00	0.0	-	-	-	1.13	-	0.00%	3.01	-	10.0	-	13.73	21.92	2.18
COVIFRA	31-Oct	7.54	7.16	(5.0)	(22.5)	2,000	14,320	56.61	405.3	0.93%	0.10	0.10	71.6	-	37.21	0.27	0.19
CIEL TEXTILE LTD	30-Jun	29.60	29.30	(1.0)	15.8	124,610	3,685,275	101.81	2,982.9	6.82%	4.50	1.50	6.5	5.6	32.52	13.84	0.90
HOTELEST	31-Dec	26.60	26.65	0.2	(15.4)	1,730	46,051	32.62	869.3	1.99%	-	-	-	-	41.48	-	0.64
MEDICAL & SURGICAL CENTRE	31-Mar	1.60	1.58	(1.3)	(6.0)	54,400	86,972	569.94	900.5	2.06%	0.09	0.03	17.6	0.4	0.93	9.68	1.70
MAURITIUS FREEPORT DEVELOPMENT	31-Dec	8.00	8.00	0.0	14.3	19,000	152,000	150.00	1,200.0	2.74%	0.32	-	25.0	-	6.37	5.02	1.26
SIT LAND HOLDINGS OPT	30-Jun	16,500.00	17,000.00	3.0	(5.6)	6	106,600	-	-	-	-	-	-	-	-	-	-
Sugar																	
CONSTANCE LA GAJETE	31-Dec	162.00	162.00	0.0	4.5	386	62,532	4.80	777.6	1.78%	-	4.50	-	2.8	131.25	-	1.23
MEDINE LTD (O)	30-Jun	69.50	70.00	0.7	2.9	3,400	236,900	86.94	6,085.8	13.91%	0.38	1.20	-	1.7	85.15	-	0.82
MEDINE LTD (P)	30-Jun	60.00	60.00	0.0	(2.8)	2,700	162,000	-	-	0.00%	-	1.20	-	2.0	-	-	-
UNION SUGAR ESTATE	31-Dec	51.75	51.75	0.0	(0.5)	-	-	18.90	978.1	2.24%	2.01	-	-	-	51.75	-	1.00
Transport																	
UNITED BUS SERVICE	30-Jun	37.00	37.00	0.0	(5.1)	100	3,700	4.97	183.9	0.42%	9.82	1.00	3.8	2.7	41.33	23.76	0.90
Total						353,137	7,689,598		43,757.6								

Code	Debentures	Nominal Value (Rs)	Price 11.04.2014	Price 18.04.2014	Volume Traded	Value Traded (Rs)	YTM on last traded price (%)	Accrued Interest	Redemption Date	Maturity Date
UTIN.B0401	United Investments Ltd - Bond	100.00	99.97	99.97	-	-	7.34	2.22	31-Jan-16	31-Jan-16